



**RESIDENTIAL SALES\***  
**OCTOBER 2023**  
**SUMMARY STATISTICS**



**Units  
Sold**



**Dollar  
Volume  
(Millions)**



**Active  
Listings**



**New  
Listings**

**CENTRAL OKANAGAN**

263  
↓-13.2%

\$214.0  
↓-15.3%

2,399  
↑15.9%

754  
↓-0.4%

**NORTH OKANAGAN**

139  
↑13.9%

\$97.1  
↑18.5%

799  
↑26.6%

226  
↑5.1%

**SHUSWAP / REVELSTOKE**

59  
↑3.5%

\$38.2  
↑4.5%

492  
↑8.4%

116  
↑0.9%

**SOUTH OKANAGAN**

115  
↓-13.5%

\$77.5  
↑0.1%

1,107  
↑37.7%

216  
↑67.4%

**SOUTH PEACE RIVER AREA**

58  
↑61.1%

\$15.3  
↑68.8%

247  
↓-3.9%

10  
↓-37.5%

**KAMLOOPS AND DISTRICT**

175  
↑6.7%

\$107.4  
↑11.3%

1,021  
↑13.2%

357  
↑10.9%

**KOOTENAY**

203  
↓-6.0%

\$94.8  
↓-5.6%

1,334  
↑11.2%

292  
↑11.9%

**TOTAL ASSOCIATION**

1,012  
↓-1.8%

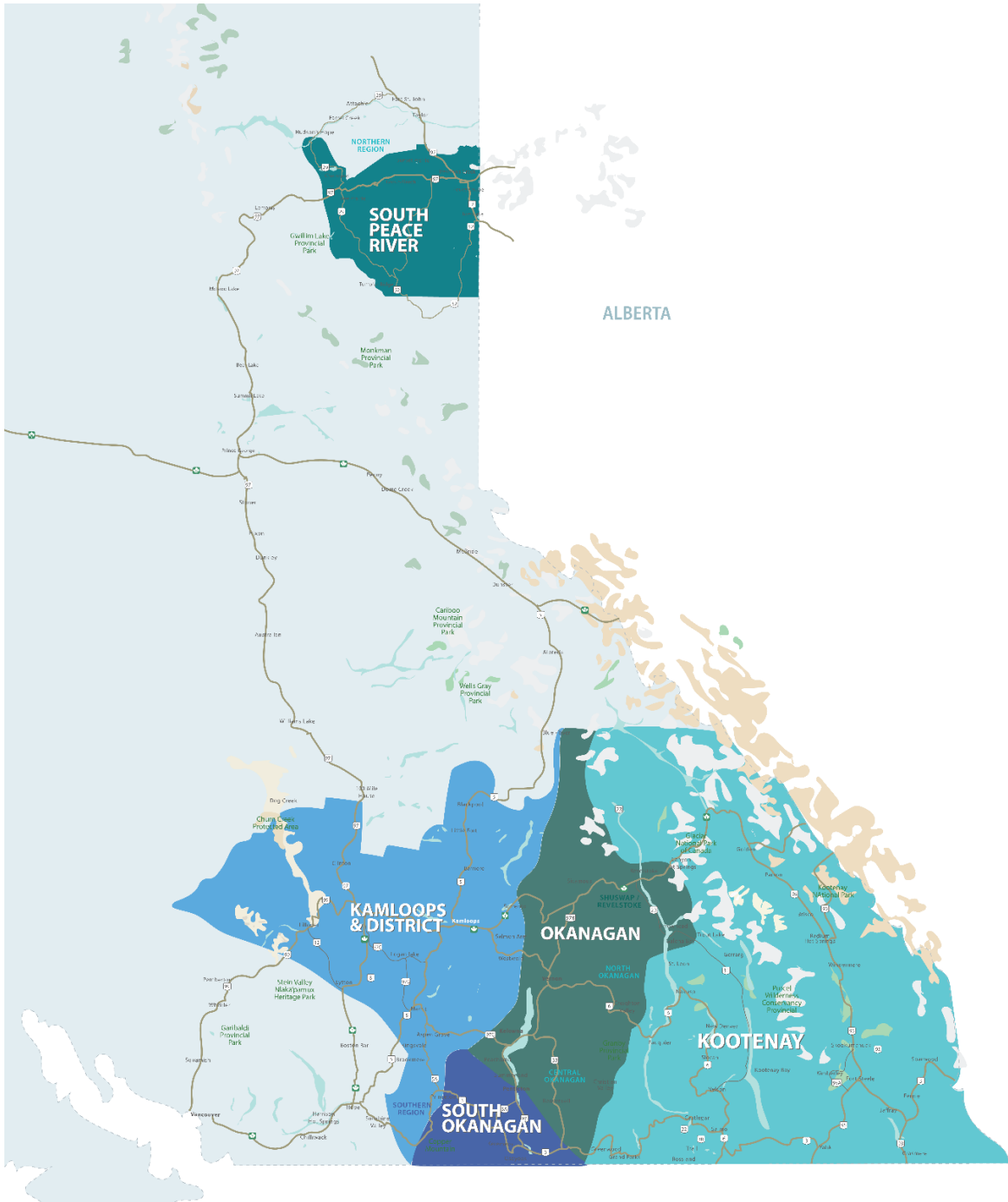
\$644.4  
↓-1.6%

7,399  
↑17.1%

1,971  
↑8.6%

\*Residential = Acreage, Duplex, Mobile Home, Recreational, Single Family, 3/4Plex, Apartment & Townhouse. Excludes Land

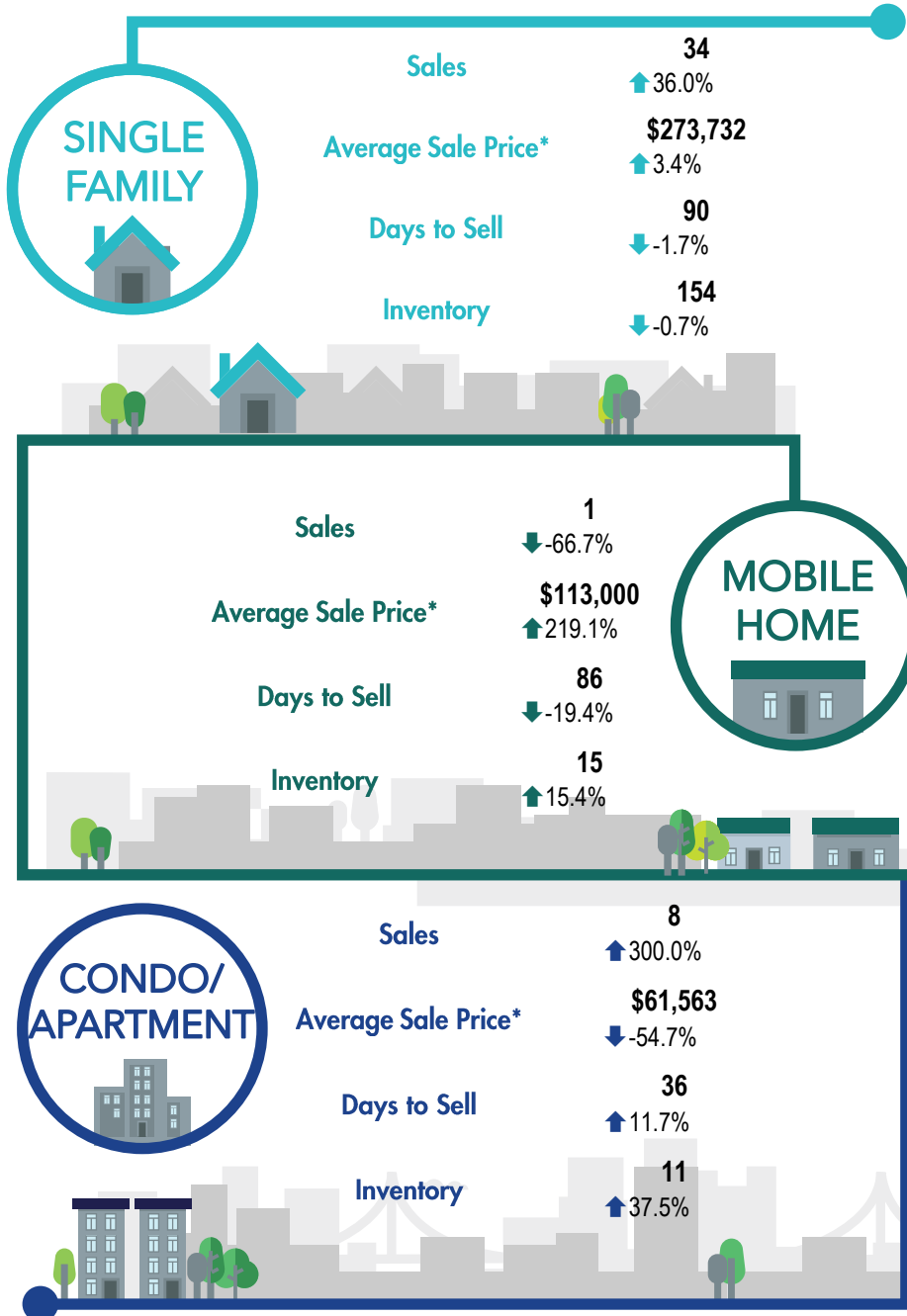
\*\*Percentage indicates change from the same period last year



This map is for informational purposes. It does not represent an on-the-ground survey and represents only the approximate relative location of property boundaries.



**SOUTH PEACE RIVER REGION**



\*The Association of Interior REALTORS® cautions that the average residential price is a useful figure only for establishing trends and comparisons over a period of time. It does not indicate an actual price for a home due to the wide selection of housing available over the vast geographic area.

\*\*Percentage indicate change from the same period last year