







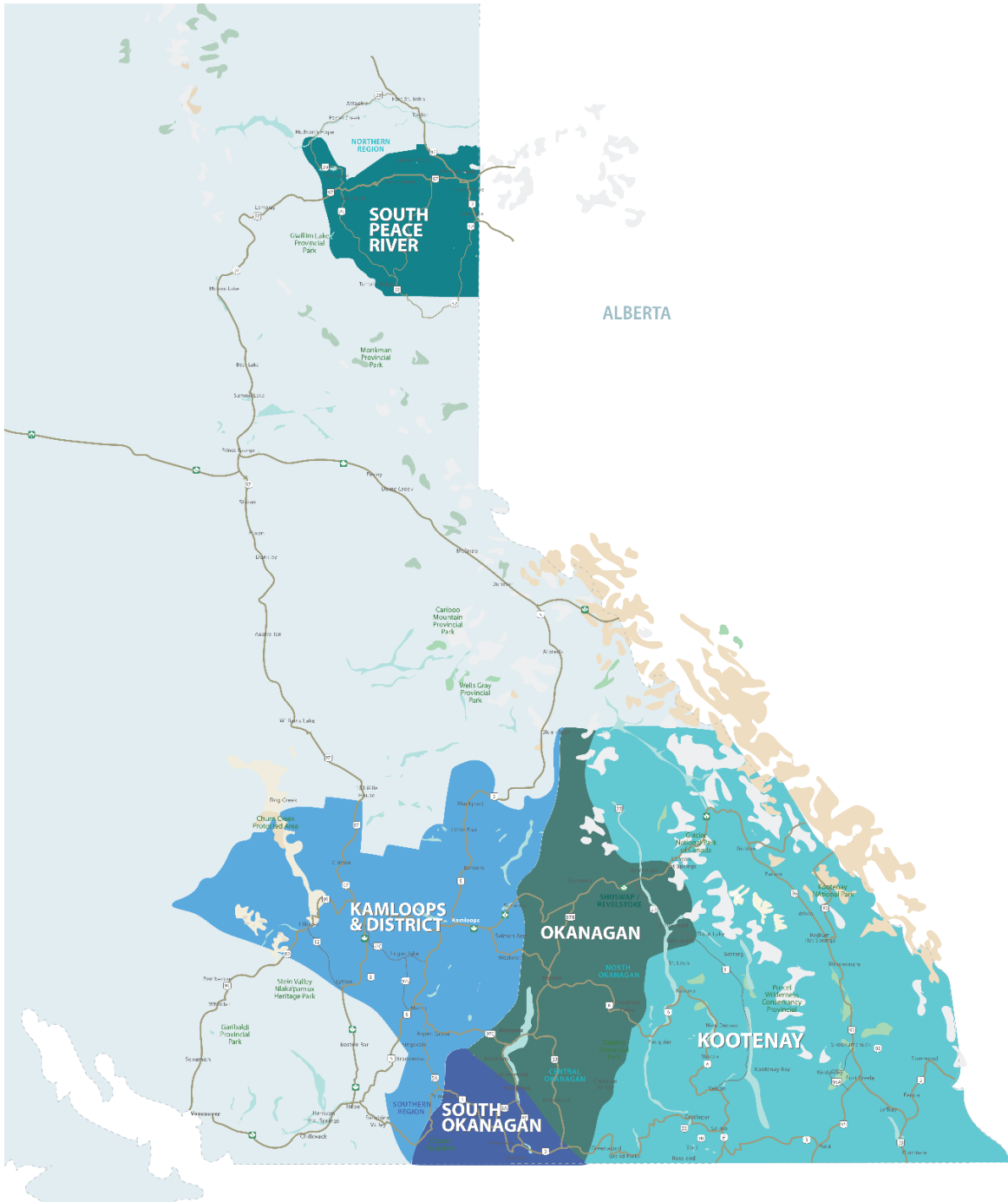
RESIDENTIAL SALES*
NOVEMBER 2022
SUMMARY STATISTICS

	 Units Sold	 Dollar Volume (Millions)	 Active Listings	 New Listings
CENTRAL OKANAGAN	252 ↓ -54.0%	\$214.7 ↓ -54.2%	1,870 ↑ 109.9%	500 ↓ -10.7%
NORTH OKANAGAN	99 ↓ -50.5%	\$60.9 ↓ -54.1%	566 ↑ 62.6%	159 ↓ -12.6%
SHUSWAP / REVELSTOKE	56 ↓ -39.8%	\$36.2 ↓ -39.0%	414 ↑ 78.4%	89 ↑ 12.7%
SOUTH OKANAGAN	101 ↓ -42.6%	\$64.8 ↓ -44.1%	789 ↑ 84.3%	176 ↑ 107.1%
SOUTH PEACE RIVER AREA	26 ↓ -43.5%	\$6.6 ↓ -50.7%	237 ↓ -13.5%	4 ↓ -55.6%
KAMLOOPS AND DISTRICT	130 ↓ -50.0%	\$78.7 ↓ -50.6%	820 ↑ 68.0%	264 ↑ 5.6%
KOOTENAY	180 ↓ -42.5%	\$84.6 ↓ -40.3%	1,087 ↑ 40.8%	254 ↓ -1.2%
TOTAL ASSOCIATION	844 ↓ -48.4%	\$546.5 ↓ -49.9%	5,783 ↑ 68.5%	1,357 ↓ -4.6%

Residential = Acreage, Duplex, Mobile Home, Recreational, Single Family, 3/4Plex, Apartment & Townhouse. Excludes Land

** Updated as of March 1, 2023

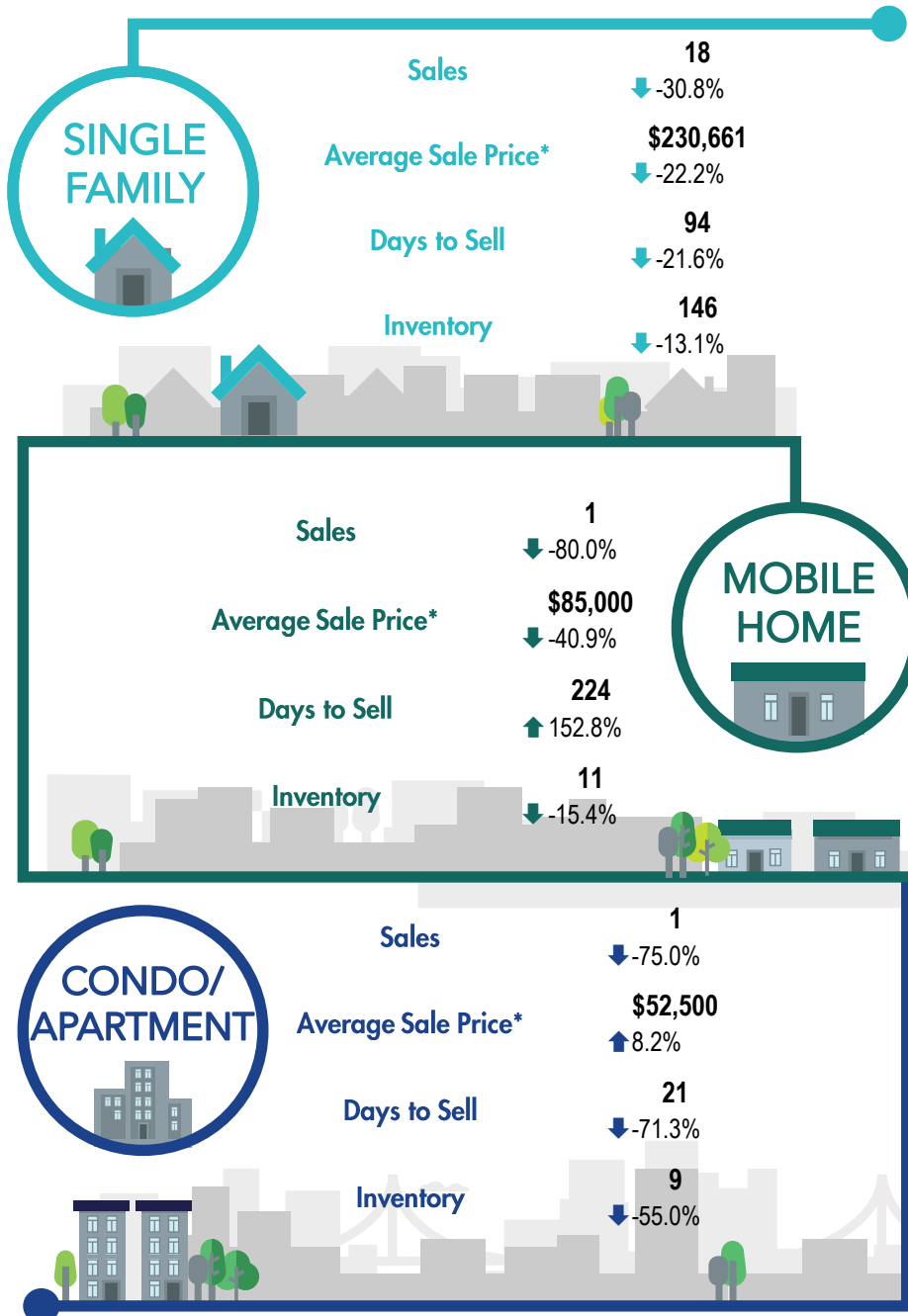
***Percentage indicate change from the same period last year



This map is for informational purposes. It does not represent an on-the-ground survey and represents only the approximate relative location of property boundaries.



SOUTH PEACE RIVER REGION



*The Association of Interior REALTORS® cautions that the average residential price is a useful figure only for establishing trends and comparisons over a period of time. It does not indicate an actual price for a home due to the wide selection of housing available over the vast geographic area.

**Percentage indicate change from the same period last year