





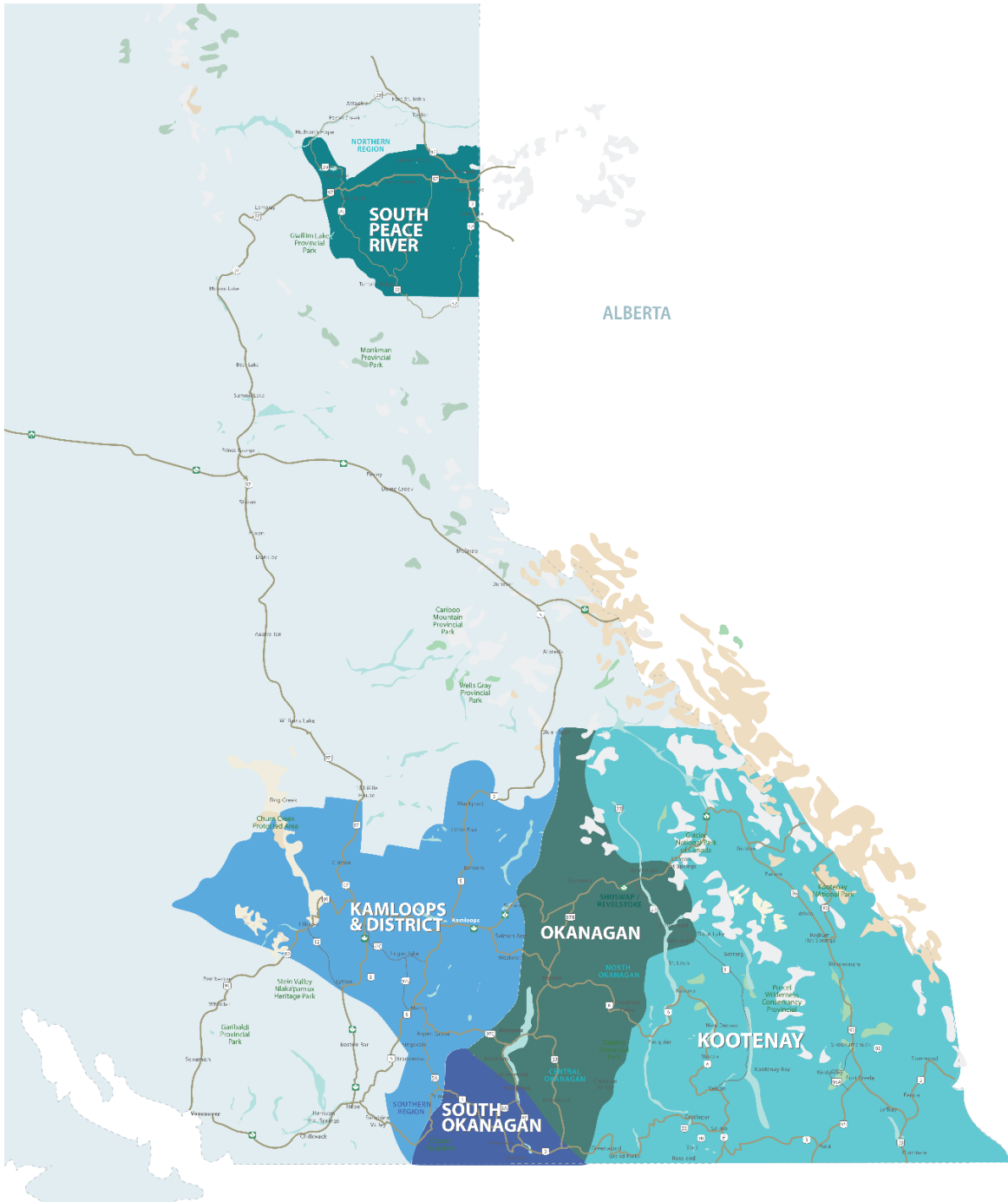


**RESIDENTIAL SALES\***  
**NOVEMBER 2023**  
**SUMMARY STATISTICS**

	 Units Sold	 Dollar Volume (Millions)	 Active Listings	 New Listings
<b>CENTRAL OKANAGAN</b>	230 ↓-8.7%	\$197.3 ↓-8.1%	2,374 ↑27.0%	657 ↑31.4%
<b>NORTH OKANAGAN</b>	104 ↑5.1%	\$67.9 ↑11.4%	724 ↑27.9%	146 ↓-8.2%
<b>SHUSWAP / REVELSTOKE</b>	54 ↓-3.6%	\$36.8 ↑1.7%	465 ↑12.3%	91 ↑2.2%
<b>SOUTH OKANAGAN</b>	75 ↓-27.2%	\$42.4 ↓-34.9%	1,095 ↑38.8%	158 ↓-12.7%
<b>SOUTH PEACE RIVER AREA</b>	26 0.0%	\$6.7 ↑1.4%	219 ↓-7.6%	13 ↑225.0%
<b>KAMLOOPS AND DISTRICT</b>	153 ↑17.7%	\$93.6 ↑20.4%	1,063 ↑8.6%	273 ↓-3.5%
<b>KOOTENAY</b>	171 ↓-13.6%	\$80.3 ↓-16.3%	1,162 ↑8.7%	239 ↓-7.4%
<b>TOTAL ASSOCIATION</b>	813 ↓-5.9%	\$525.0 ↓-5.8%	7,102 ↑19.9%	1,577 ↑7.0%

\*Residential = Acreage, Duplex, Mobile Home, Recreational, Single Family, 3/4Plex, Apartment & Townhouse. Excludes Land

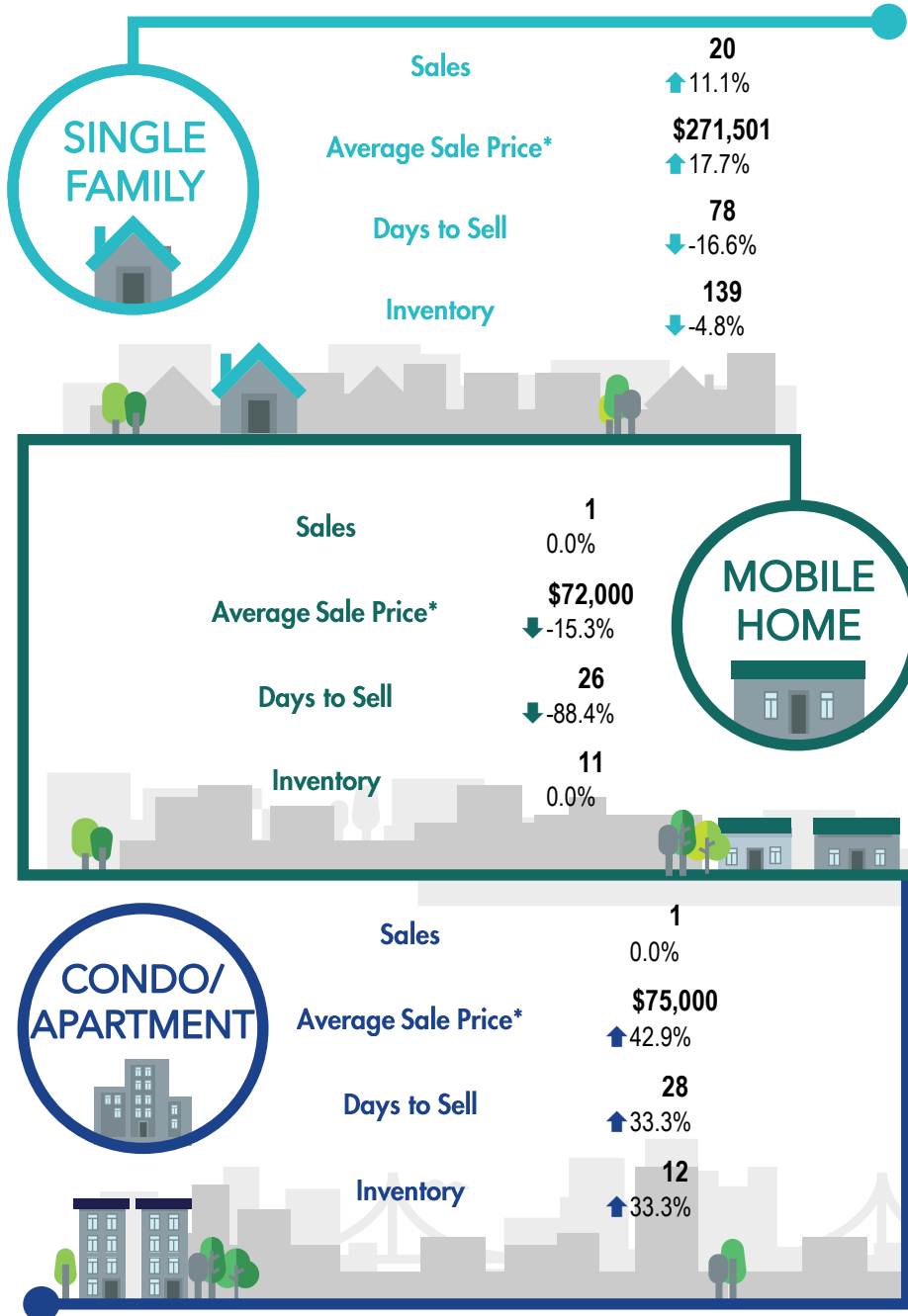
\*\*Percentage indicates change from the same period last year



This map is for informational purposes. It does not represent an on-the-ground survey and represents only the approximate relative location of property boundaries.



**SOUTH PEACE RIVER REGION**



\*The Association of Interior REALTORS® cautions that the average residential price is a useful figure only for establishing trends and comparisons over a period of time. It does not indicate an actual price for a home due to the wide selection of housing available over the vast geographic area.

\*\*Percentage indicate change from the same period last year