







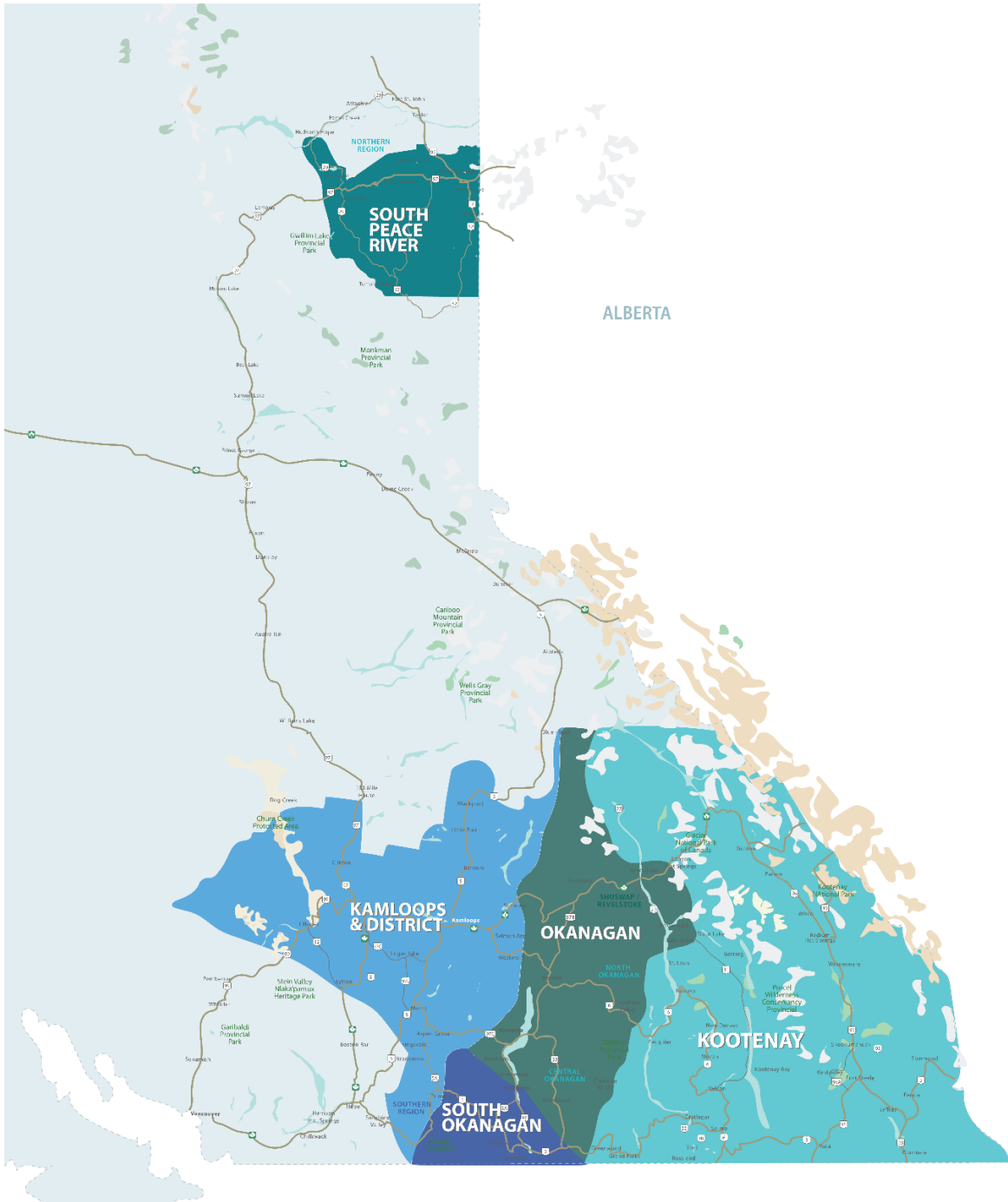
RESIDENTIAL SALES*
MAY 2022
SUMMARY STATISTICS

				
	Units Sold	Dollar Volume (Millions)	Active Listings	New Listings
CENTRAL OKANAGAN	554 ↓ -28.2%	\$474.3 ↓ -21.0%	1,605 ↑ 29.1%	1,178 ↑ 14.3%
NORTH OKANAGAN	199 ↓ -24.9%	\$145.0 ↓ -17.8%	524 ↑ 12.0%	358 ↑ 19.7%
SHUSWAP / REVELSTOKE	112 ↓ -11.8%	\$75.0 ↓ -4.7%	436 ↑ 47.8%	255 ↑ 59.4%
SOUTH OKANAGAN	185 ↓ -29.4%	\$127.3 ↓ -27.1%	690 ↑ 6.3%	251 ↓ -29.9%
SOUTH PEACE RIVER AREA	72 ↑ 53.2%	\$21.0 ↑ 68.8%	222 ↓ -35.5%	13 ↓ -86.7%
KAMLOOPS AND DISTRICT**	263 ↓ -33.6%	\$170.9 ↓ -21.5%	844 ↑ 30.7%	553 ↑ 9.7%
KOOTENAY	302 ↓ -19.9%	\$154.3 ↓ -11.1%	1,067 ↑ 6.3%	558 ↑ 0.7%
TOTAL ASSOCIATION	1,687 ↓ -24.9%	\$1,167.7 ↓ -18.6%	5,388 ↑ 15.9%	3,166 ↑ 5.4%

*Residential = Acreage, Duplex, Mobile Home, Recreational, Single Family, 3/4Plex, Apartment & Townhouse. Excludes Land

** Updated as of March 1, 2023

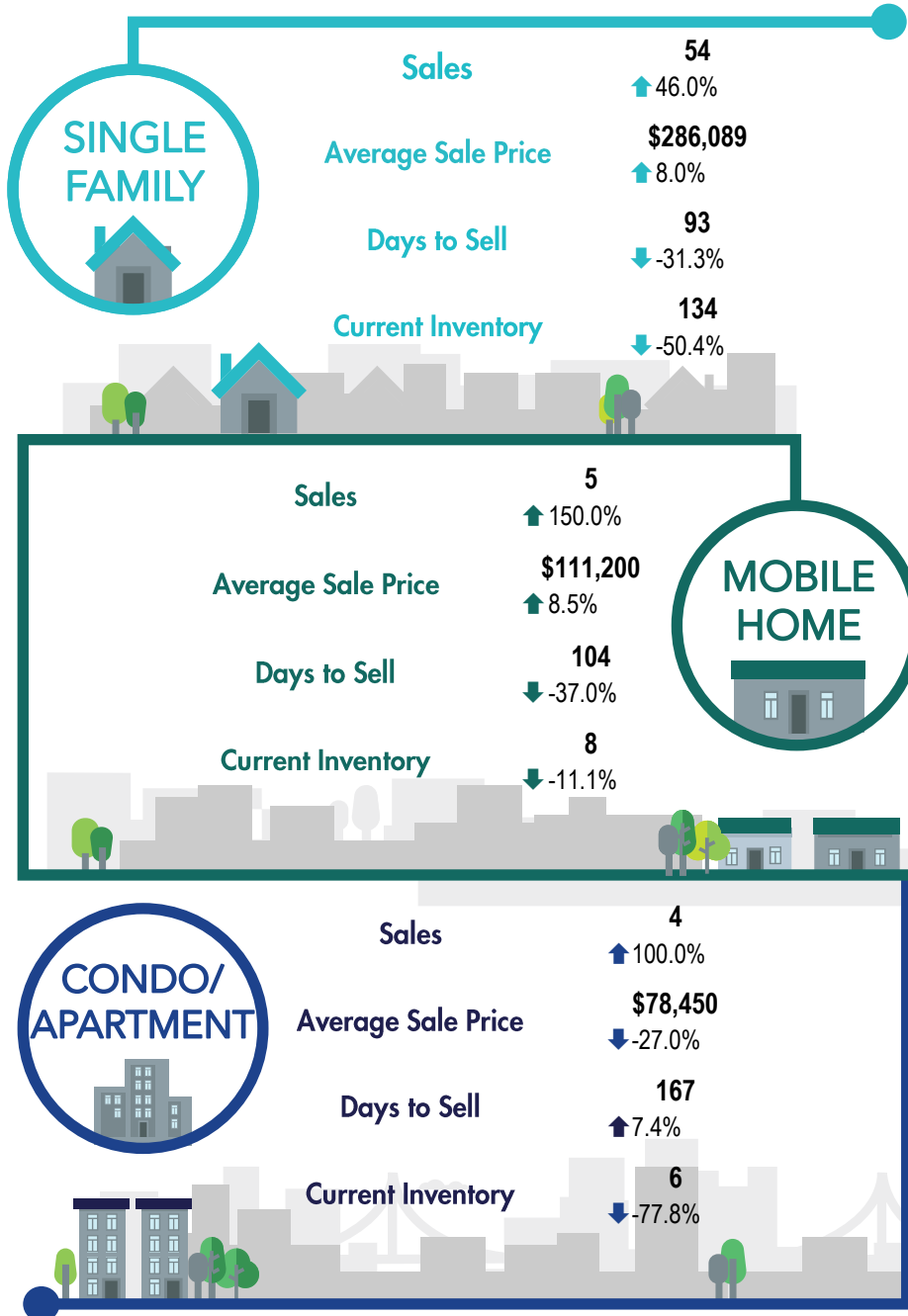
***Percentage indicate change from the same period last year



This map is for informational purposes. It does not represent an on-the-ground survey and represents only the approximate relative location of property boundaries.



SOUTH PEACE RIVER REGION



*The Association of Interior REALTORS® cautions that the average residential price is a useful figure only for establishing trends and comparisons over a period of time. It does not indicate an actual price for a home due to the wide selection of housing available over the vast geographic area.

**Percentage indicate change from the same period last year