







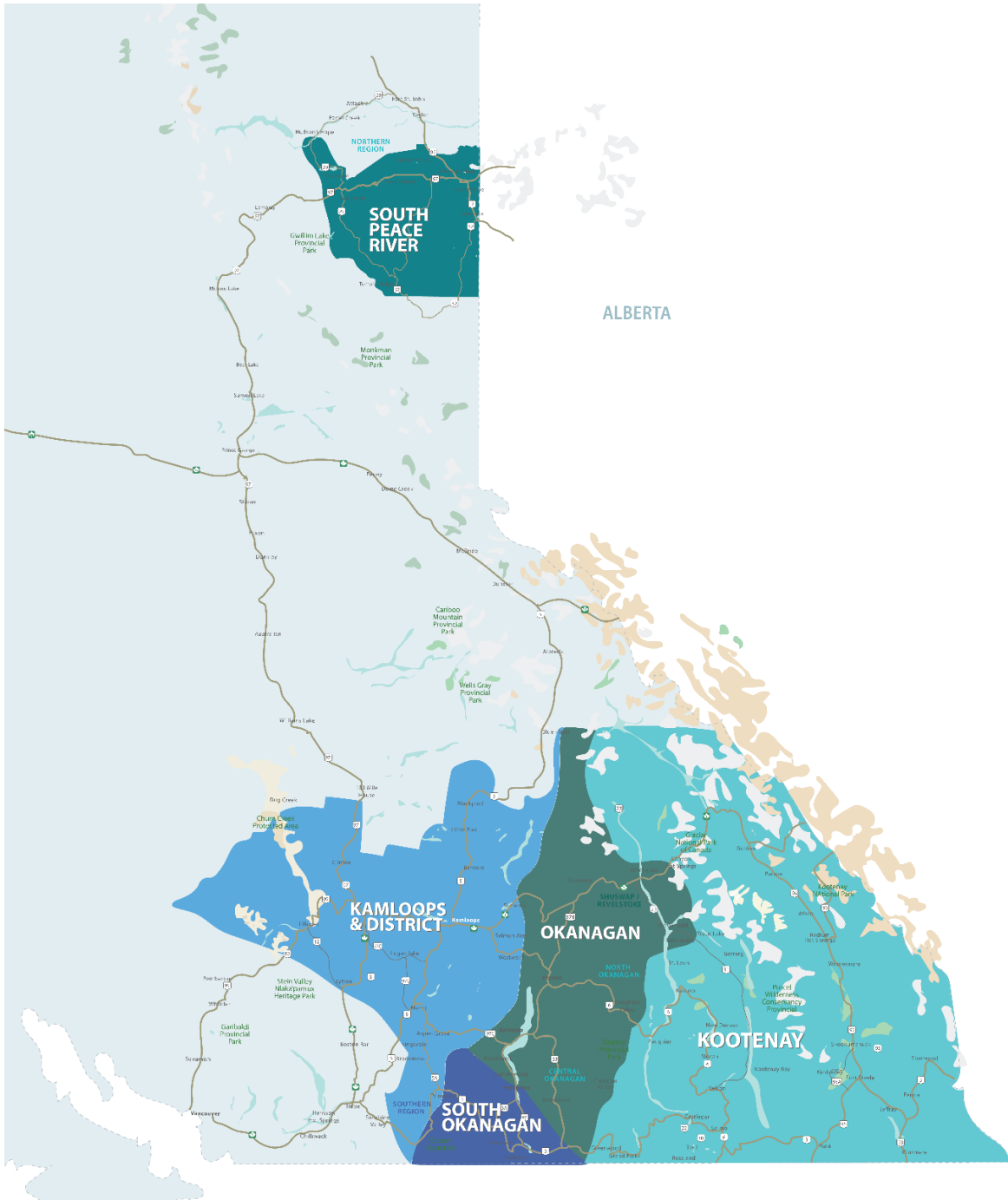
RESIDENTIAL SALES*
MARCH 2022
SUMMARY STATISTICS

	 Units Sold	 Dollar Volume (Millions)	 Active Listings	 New Listings
CENTRAL OKANAGAN	641 ↓-29.6%	\$619.7 ↓-10.9%	1037 ↓-10.3%	1147 ↑3.1%
NORTH OKANAGAN	242 ↓-23.4%	\$179.7 ↓-0.4%	354 ↓-21.9%	334 ↓-11.9%
SHUSWAP / REVELSTOKE	89 ↓-35.0%	\$59.3 ↓-19.4%	248 ↓-0.4%	152 ↓-5.0%
SOUTH OKANAGAN	213 ↓-35.8%	\$135.9 ↓-34.2%	448 ↓-26.2%	211 ↓-43.1%
SOUTH PEACE RIVER AREA	62 ↑19.2%	\$16.1 ↓-5.9%	224 ↓-24.8%	22 ↓-74.1%
KAMLOOPS AND DISTRICT	326 ↓-15.1%	\$215.6 ↑2.9%	487 ↓-14.1%	510 ↑15.1%
KOOTENAY	325 ↓-17.3%	\$170.2 ↑1.3%	764 ↓-9.8%	495 ↓-5.2%
TOTAL ASSOCIATION	1,898 ↓-24.8%	\$1,396.5 ↓-9.9%	3,562 ↓-14.7%	2871 ↓-6.5%

*Residential = Acreage, Duplex, Mobile Home, Recreational, Single Family, 3/4Plex, Apartment & Townhouse. Excludes Land

** Updated as of March 1, 2023

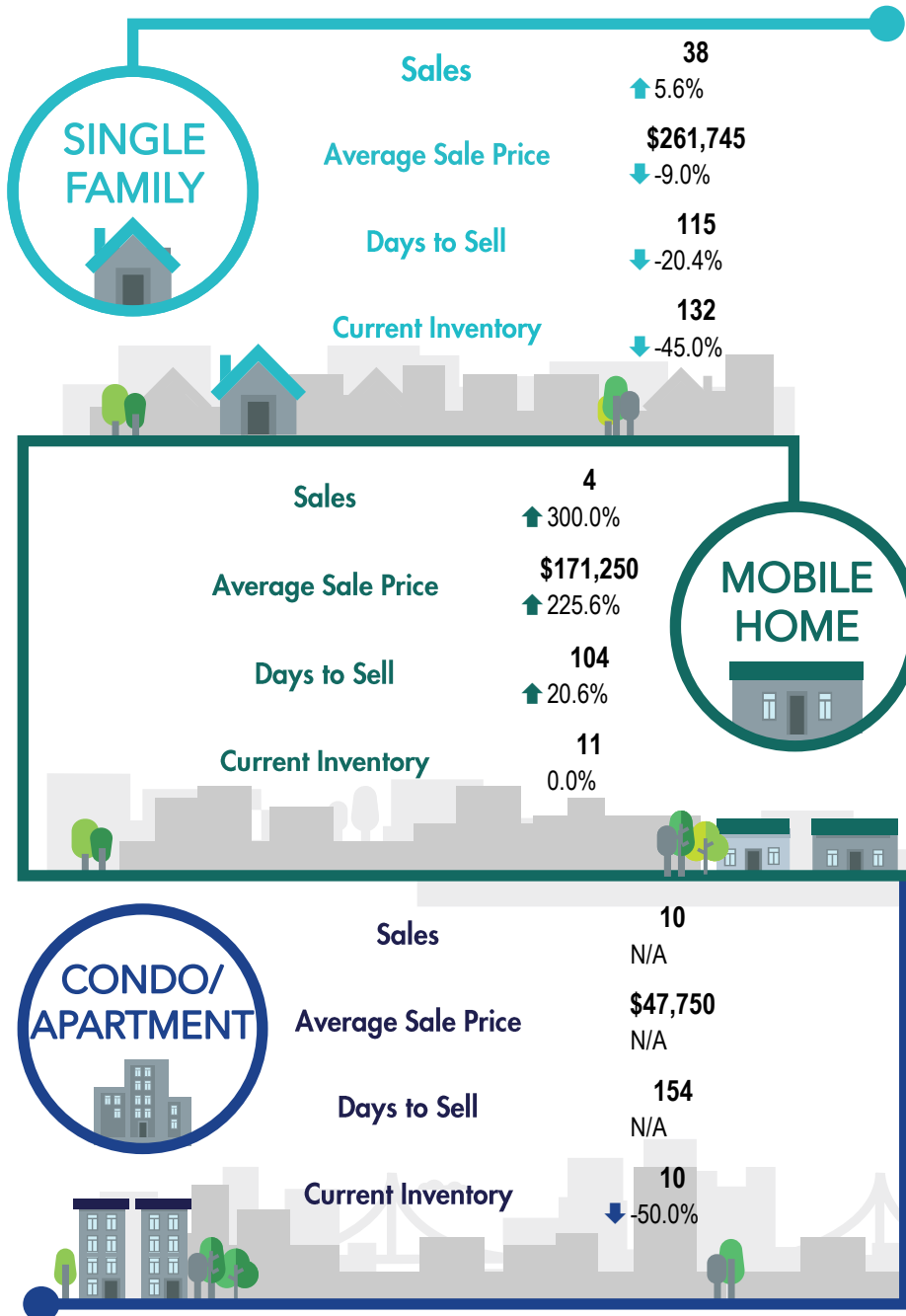
***Percentage indicate change from the same period last year



This map is for informational purposes. It does not represent an on-the-ground survey and represents only the approximate relative location of property boundaries.



SOUTH PEACE RIVER REGION



*The Association of Interior REALTORS® cautions that the average residential price is a useful figure only for establishing trends and comparisons over a period of time. It does not indicate an actual price for a home due to the wide selection of housing available over the vast geographic area.

**Percentage indicate change from the same period last year