





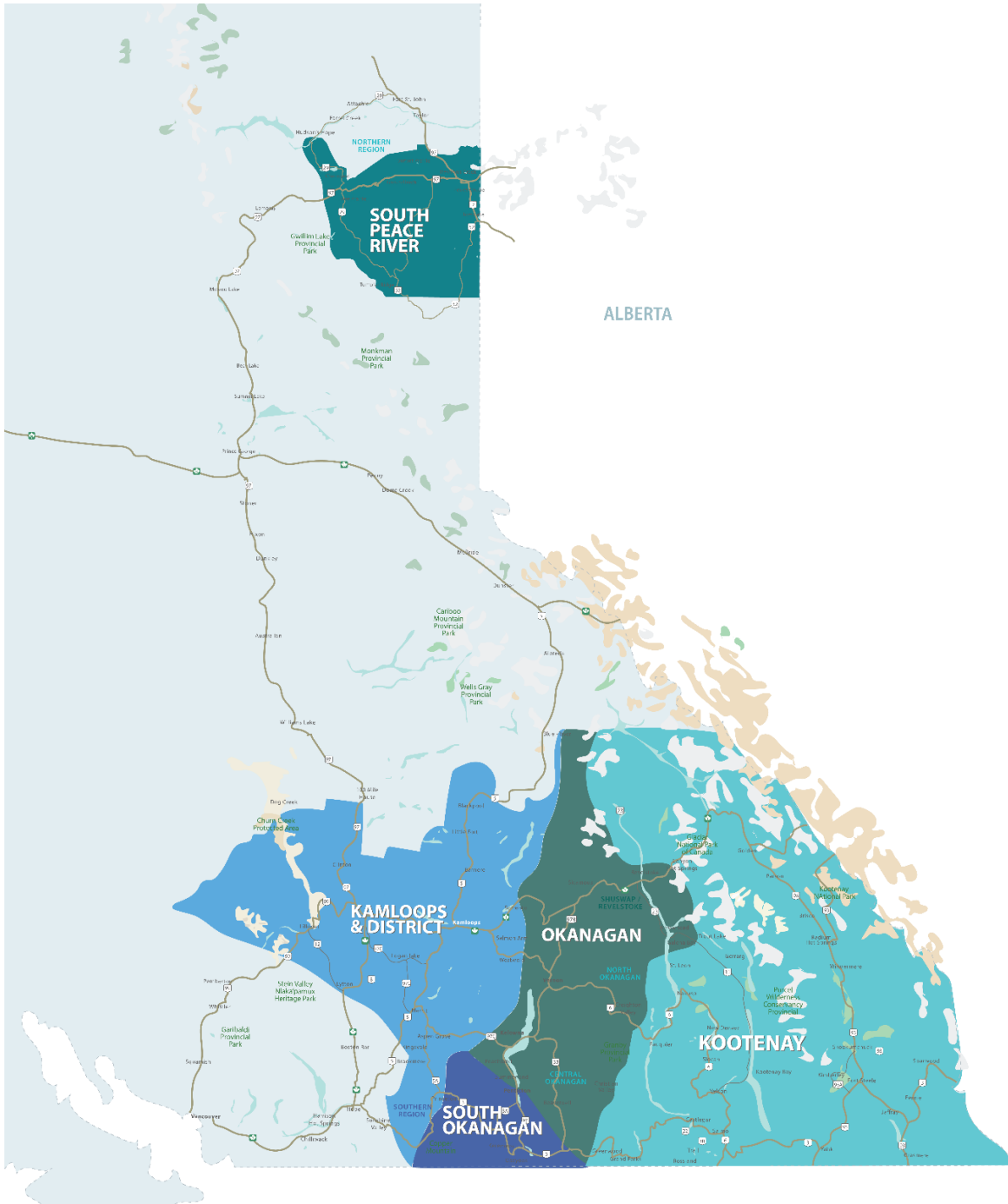


RESIDENTIAL SALES*
DECEMBER 2023
SUMMARY STATISTICS

	 Units Sold	 Dollar Volume (Millions)	 Active Listings	 New Listings
CENTRAL OKANAGAN	178 ↓-2.7%	\$154.5 ↑0.9%	2,007 ↑34.7%	320 ↑24.5%
NORTH OKANAGAN	60 ↓-4.8%	\$44.7 ↑28.6%	605 ↑27.1%	97 ↑32.9%
SHUSWAP / REVELSTOKE	33 ↓-31.3%	\$19.3 ↓-28.9%	368 ↑20.3%	42 ↑10.5%
SOUTH OKANAGAN	58 ↓-28.4%	\$34.6 ↓-32.8%	962 ↑47.5%	122 ↑34.1%
SOUTH PEACE RIVER AREA	19 ↓-20.8%	\$5.2 ↓-19.4%	192 ↓-8.6%	21 ↑5.0%
KAMLOOPS AND DISTRICT	87 ↓-6.5%	\$52.5 ↑4.7%	740 ↑11.4%	133 ↑19.8%
KOOTENAY	93 ↓-16.2%	\$41.0 ↓-16.9%	1,015 ↑7.9%	124 ↓-15.1%
TOTAL ASSOCIATION	528 ↓-12.4%	\$351.7 ↓-5.5%	5,889 ↑24.3%	859 ↑16.7%

*Residential = Acreage, Duplex, Mobile Home, Recreational, Single Family, 3/4Plex, Apartment & Townhouse. Excludes Land

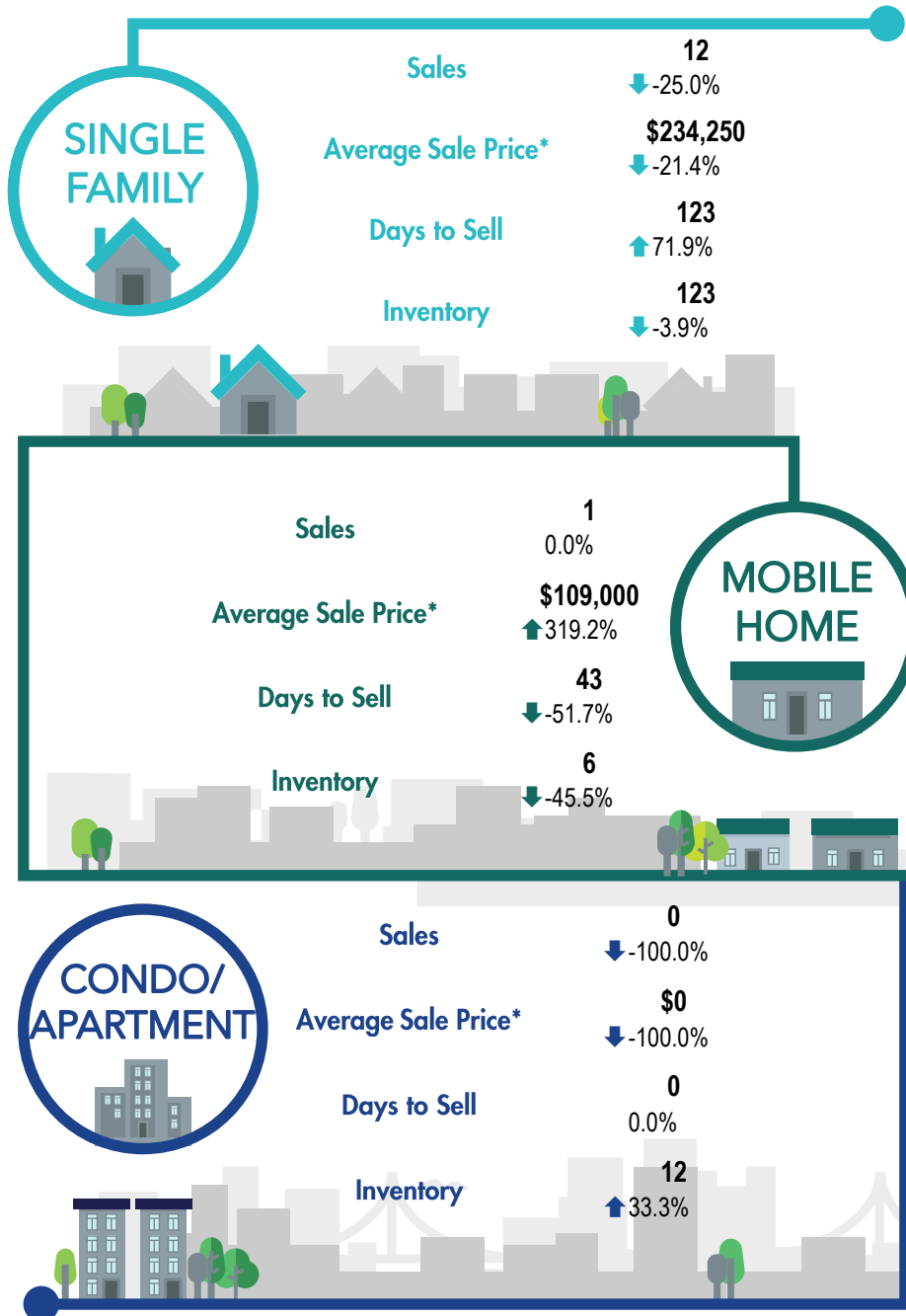
**Percentage indicates change from the same period last year



This map is for informational purposes. It does not represent an on-the-ground survey and represents only the approximate relative location of property boundaries.



SOUTH PEACE RIVER REGION



*The Association of Interior REALTORS® cautions that the average residential price is a useful figure only for establishing trends and comparisons over a period of time. It does not indicate an actual price for a home due to the wide selection of housing available over the vast geographic area.

**Percentage indicate change from the same period last year