

# SHUSWAP ZONE

## STAT - O - GRAM

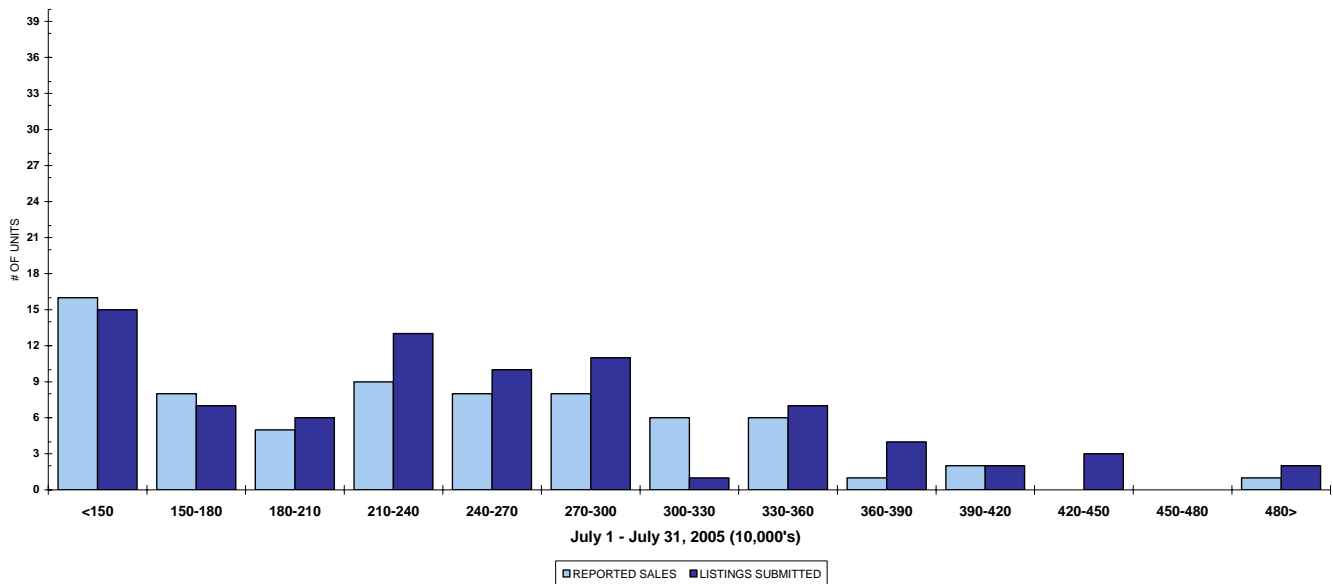
JULY 2005

### QUICK SUMMARY

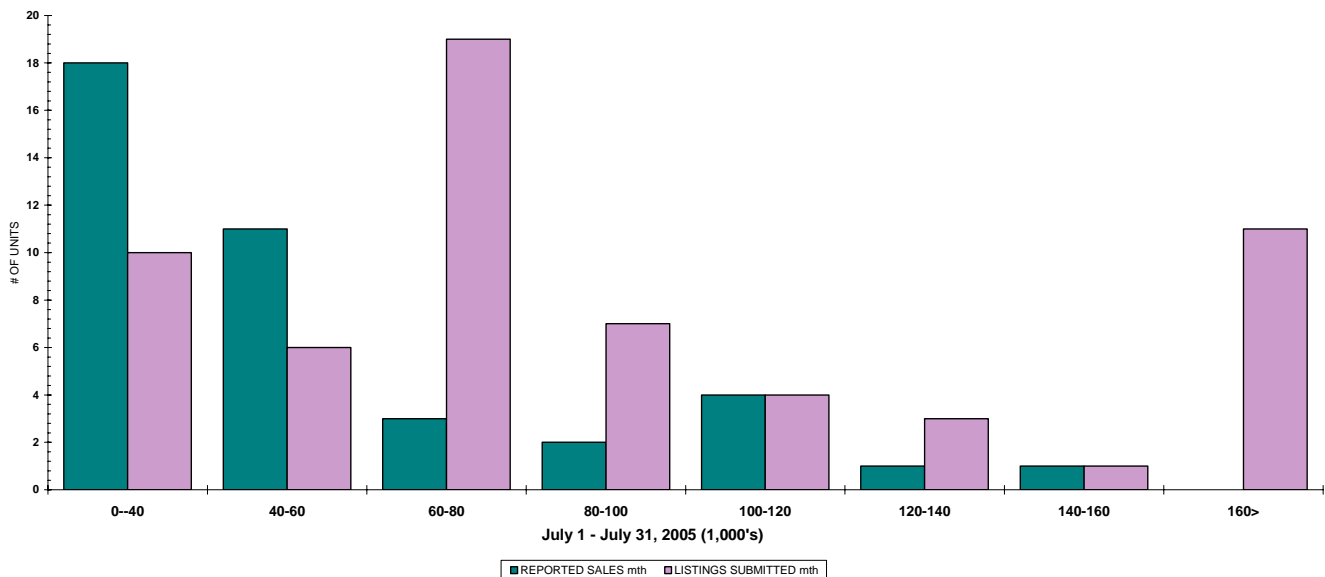
	TOTAL SALES VOLUME		Residential Single Family SALES		TOTAL LISTINGS	
	<u># of Units</u>	<u>\$ Value</u>	<u># of Units</u>	<u>\$ Value</u>	<u>Listings Taken</u>	<u>Inventory</u>
July 2005	166	\$29,581,632	71	\$16,421,782	214	825
June 2005	159	\$27,342,216	51	\$10,975,250	212	844
July 2004	141	\$20,645,929	67	\$11,484,701	223	1,185

The Shuswap Zone has **95** Members. The average of listings-per-licensee is 8.6

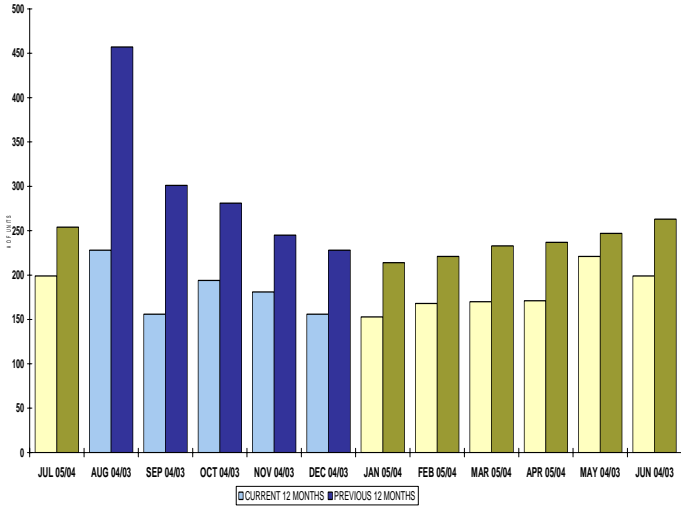
RESIDENTIAL LISTING & SALES ACTIVITY  
SHUSWAP DIVISION (BY PRICE CATEGORY)



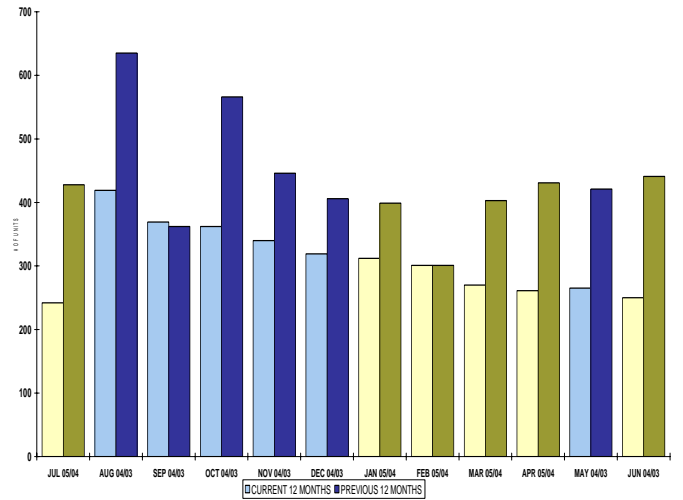
LOT LISTING & SALES ACTIVITY  
SHUSWAP DIVISION (BY PRICE CATEGORY)



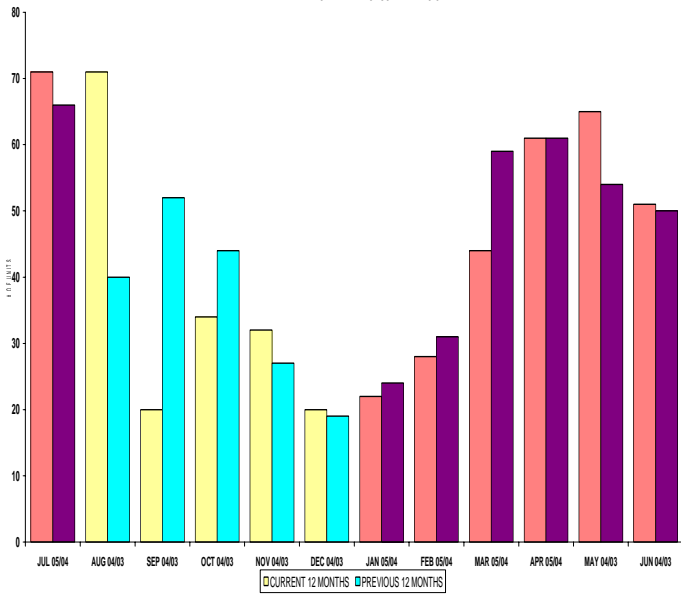
INVENTORY OF ACTIVE LISTINGS  
RESIDENTIAL - SHUSWAP DIVISION



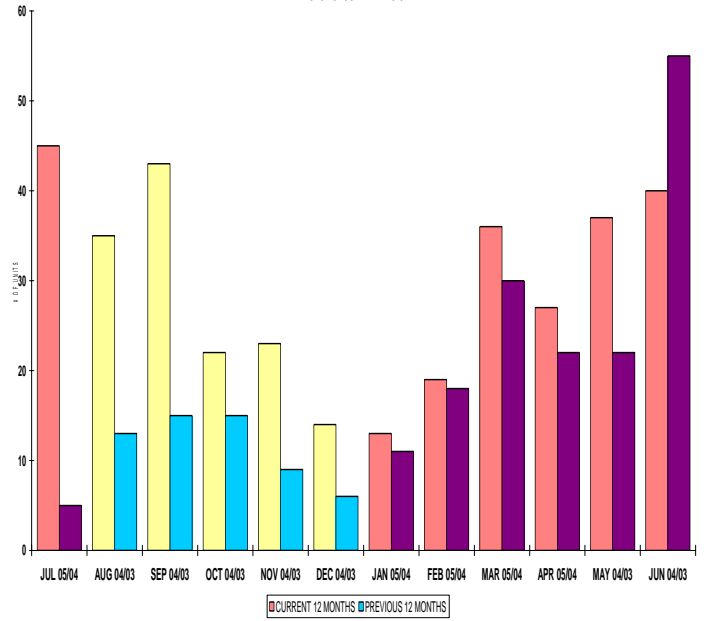
INVENTORY OF ACTIVE LISTINGS  
LOTS - SHUSWAP DIVISION



NUMBER OF UNITS SOLD  
RESIDENTIAL - SHUSWAP DIVISION



NUMBER OF UNITS SOLD  
LOTS - SHUSWAP DIVISION



**SHUSWAP ZONE**

**July 2005**

Category	Sales	New Listings	Current Inventory	Sell/Inv. Ratio	Days To Sell
ACREAGE	7	16	55	12.73%	272
ACREAGE/HOUSE	18	19	83	21.69%	121
LOTS	38	45	187	20.32%	112
RESIDENTIAL	71	79	199	35.68%	67
<b>AVERAGE HOUSE PRICE \$231,293</b>			<b>MEDIAN HOUSE PRICE \$233,750</b>		

Lots Include: Acreage Waterfront, Lots and Lots Waterfront