

# SHUSWAP DIVISION

## STAT - O - GRAM

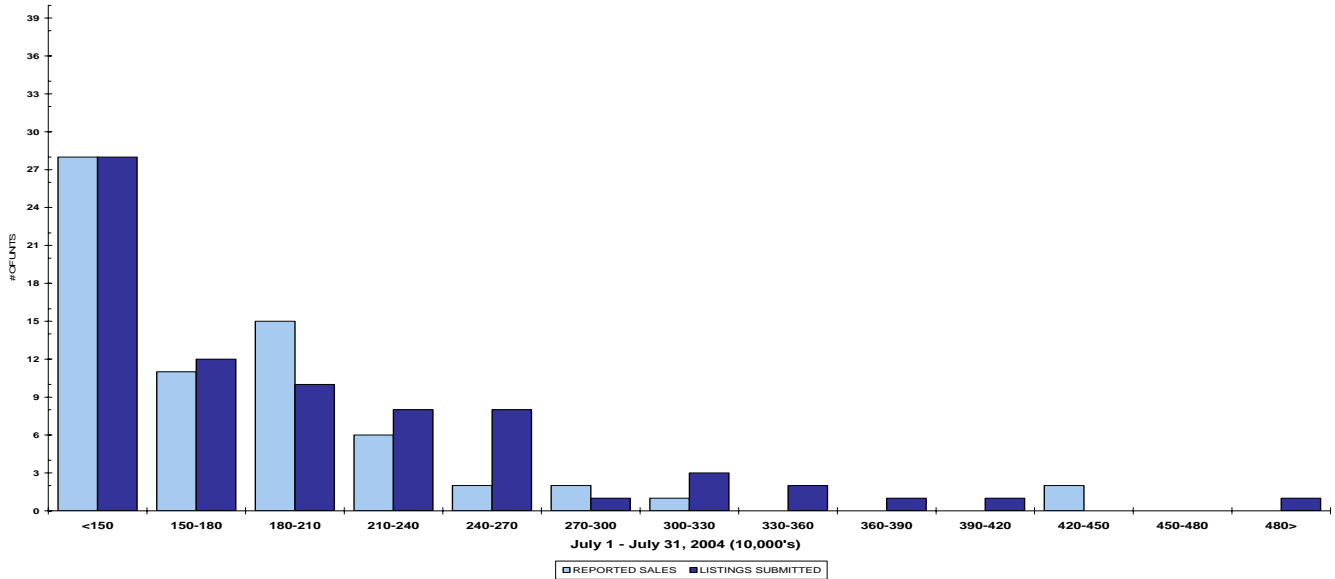
July 2004

### QUICK SUMMARY

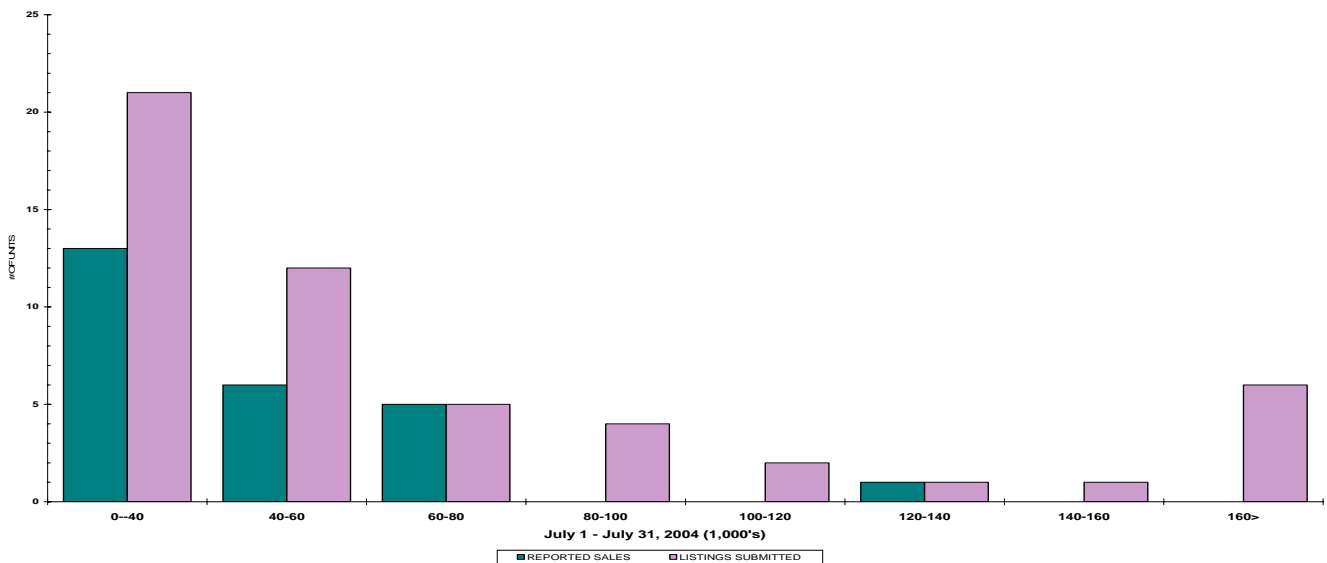
	TOTAL SALES VOLUME		RESIDENTIAL SALES		TOTAL LISTINGS	
	<u># of Units</u>	<u>\$ Value</u>	<u># of Units</u>	<u>\$ Value</u>	<u>Listings Taken</u>	<u>Inventory</u>
July 2004	138	\$19,835,929	66	\$11,386,701	216	1,185
June 2004	164	\$32,656,514	52	\$9,165,984	227	1,178
July 2003	127	\$18,637,917	56	\$9,371,650	183	1,451

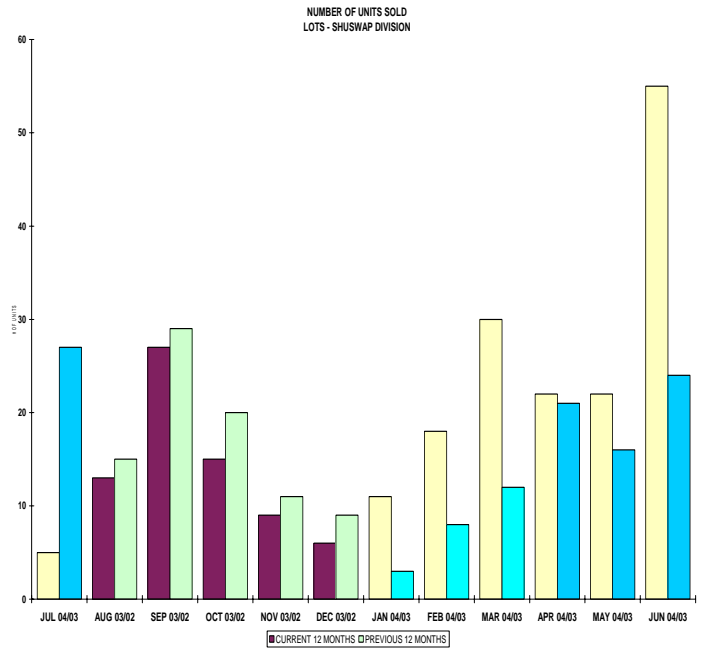
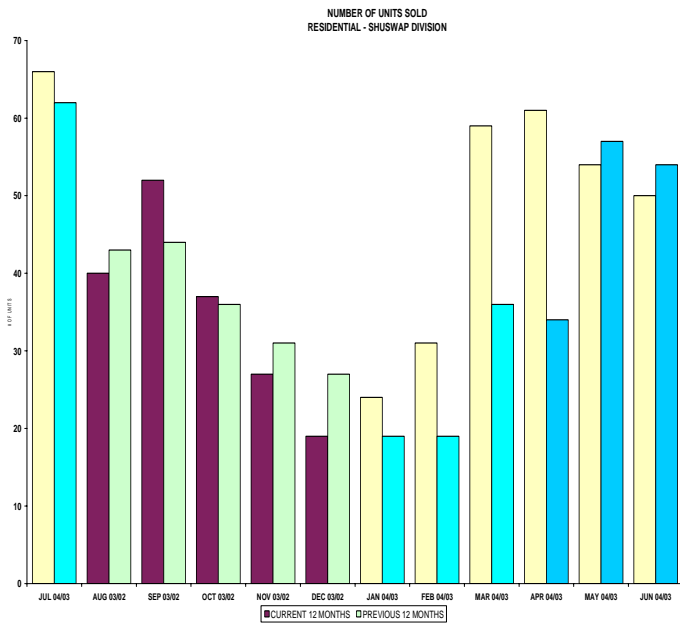
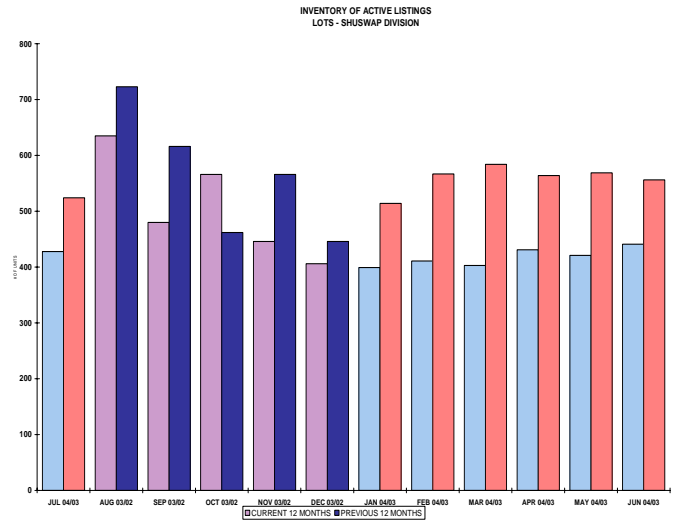
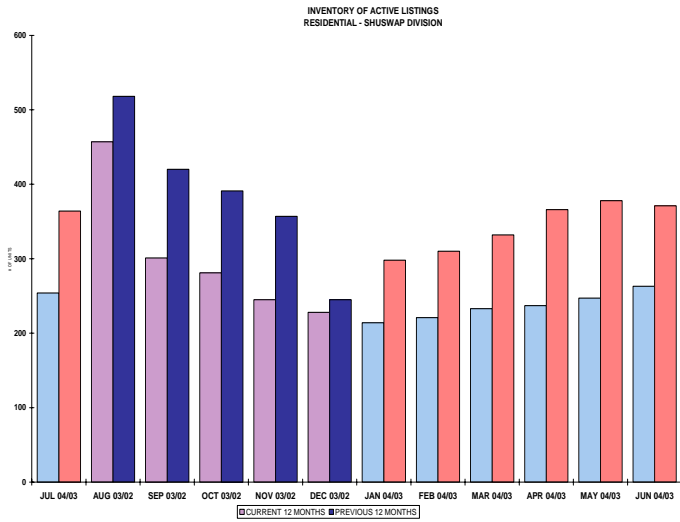
The Shuswap Zone has **84** Members. The average of listings-per-licensee is 14.0

RESIDENTIAL LISTING & SALES ACTIVITY  
SHUSWAP DIVISION (BY PRICE CATEGORY)



LOT LISTING & SALES ACTIVITY  
SHUSWAP DIVISION (BY PRICE CATEGORY)





**SHUSWAP DIVISION**

**July 2004**

Category	Sales	New Listings	Current Inventory	Sell/Inv. Ratio	Days To Sell
ACREAGE	5	7	110	4.55%	549
ACREAGE/HOUSE	11	26	133	8.27%	188
LOTS	20	45	318	6.29%	295
RESIDENTIAL	52	84	263	19.77%	146
<b>AVERAGE HOUSE PRICE \$172,526</b>			<b>MEDIAN HOUSE PRICE \$167,250</b>		

Lots Include: Acreage Waterfront, Lots and Lots Waterfront