

# SHUSWAP DIVISION

## STAT - O - GRAM

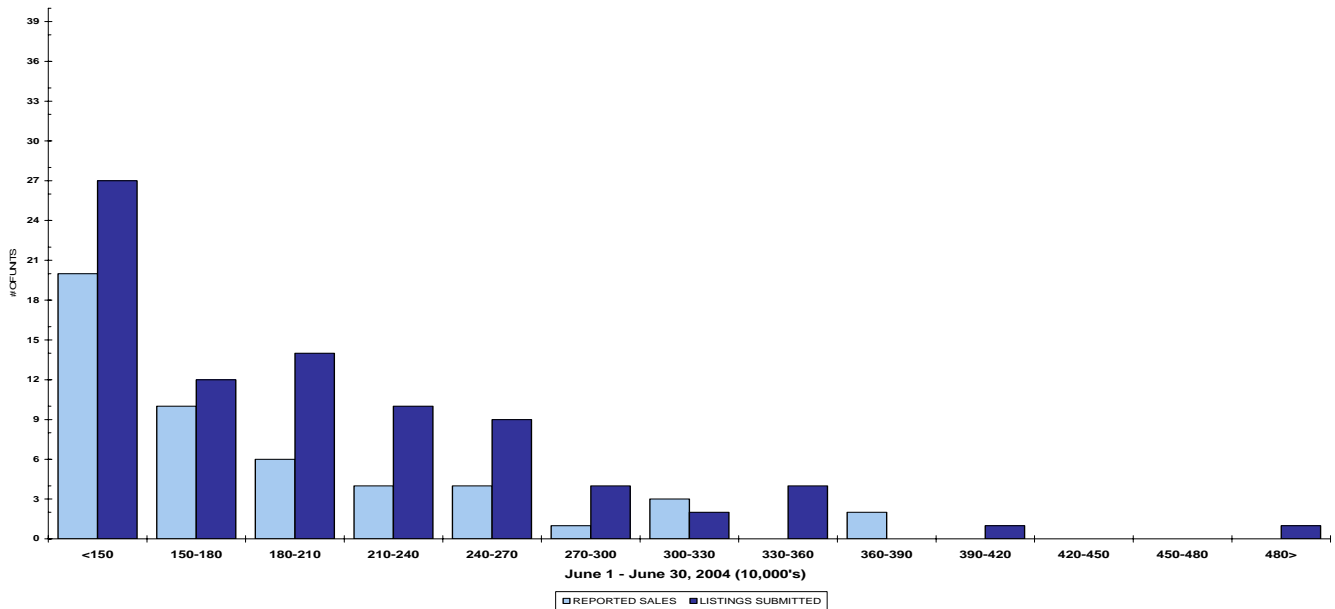
June 2004

### QUICK SUMMARY

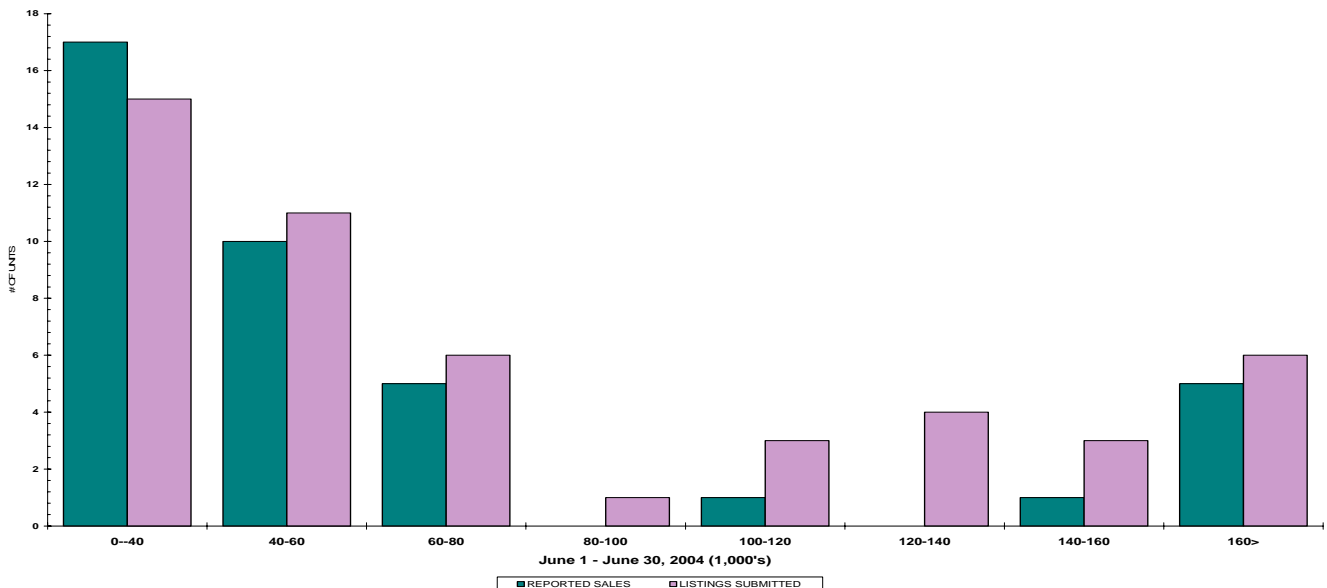
	TOTAL SALES VOLUME		RESIDENTIAL SALES		TOTAL LISTINGS	
	<u># of Units</u>	<u>\$ Value</u>	<u># of Units</u>	<u>\$ Value</u>	<u>Listings Taken</u>	<u>Inventory</u>
June 2004	164	\$32,656,514	52	\$9,165,984	227	1,178
May 2004	117	\$18,777,712	54	\$9,929,001	222	1,174
June 2003	118	\$19,197,789	54	\$7,715,100	186	1,504

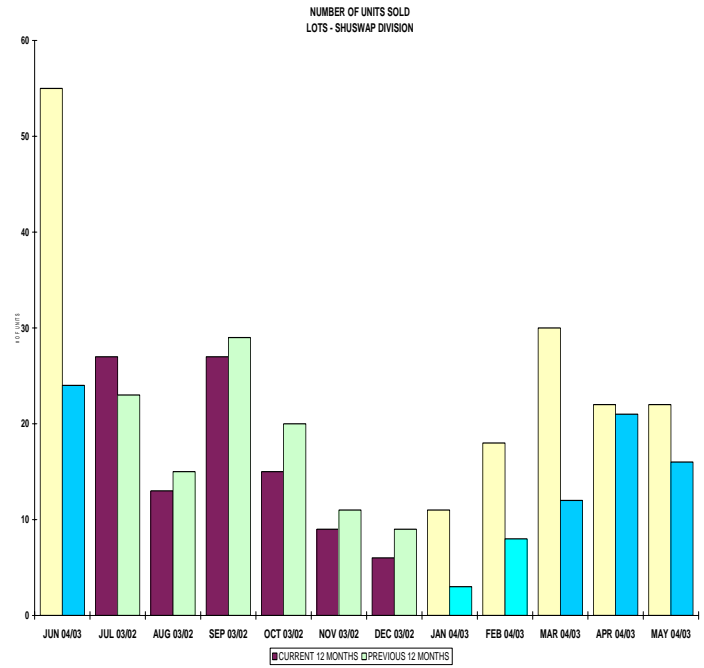
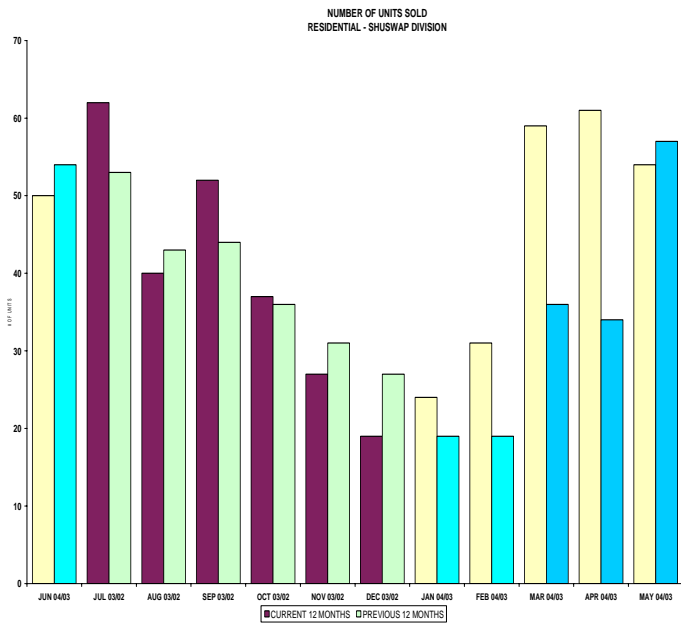
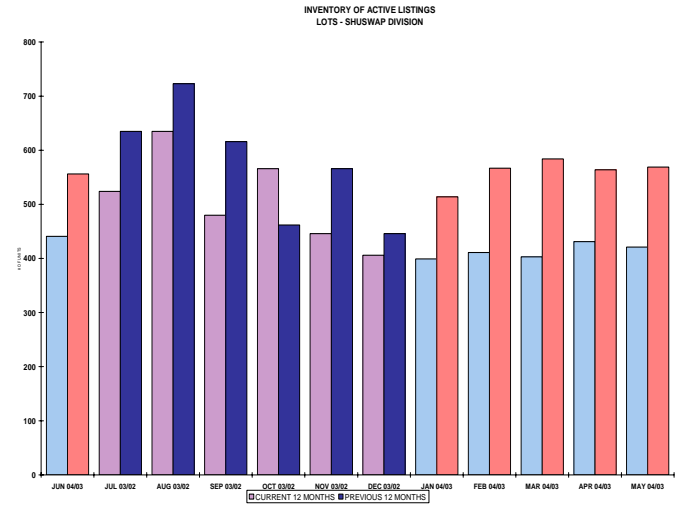
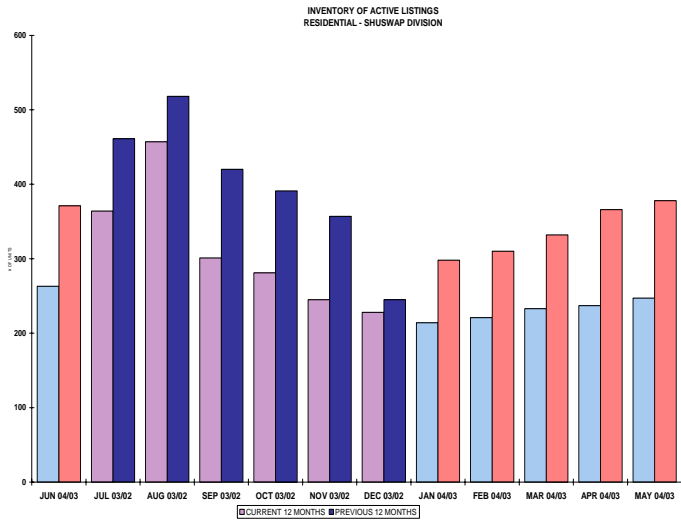
The average of listings-per-licensee is 14.0

RESIDENTIAL LISTING & SALES ACTIVITY  
SHUSWAP DIVISION (BY PRICE CATEGORY)



LOT LISTING & SALES ACTIVITY  
SHUSWAP DIVISION (BY PRICE CATEGORY)





**SHUSWAP DIVISION**

**June 2004**

Category	Sales	New Listings	Current Inventory	Sell/Inv. Ratio	Days To Sell
ACREAGE	8	13	113	7.08%	370
ACREAGE/HOUSE	24	30	137	17.52%	130
LOTS	31	36	304	10.20%	769
RESIDENTIAL	52	84	263	19.77%	146
<b>AVERAGE HOUSE PRICE \$176,269</b>			<b>MEDIAN HOUSE PRICE \$162,000</b>		

Lots Include: Acreage Waterfront, Lots and Lots Waterfront