

SHUSWAP ZONE

STAT - O - GRAM

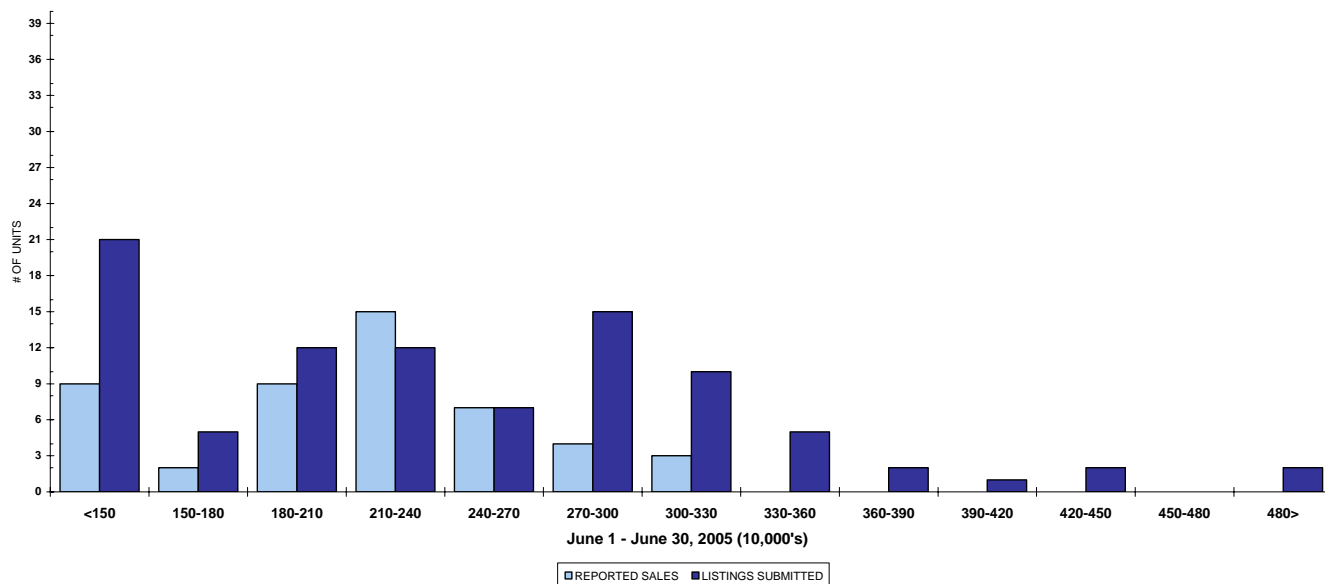
JUNE 2005

QUICK SUMMARY

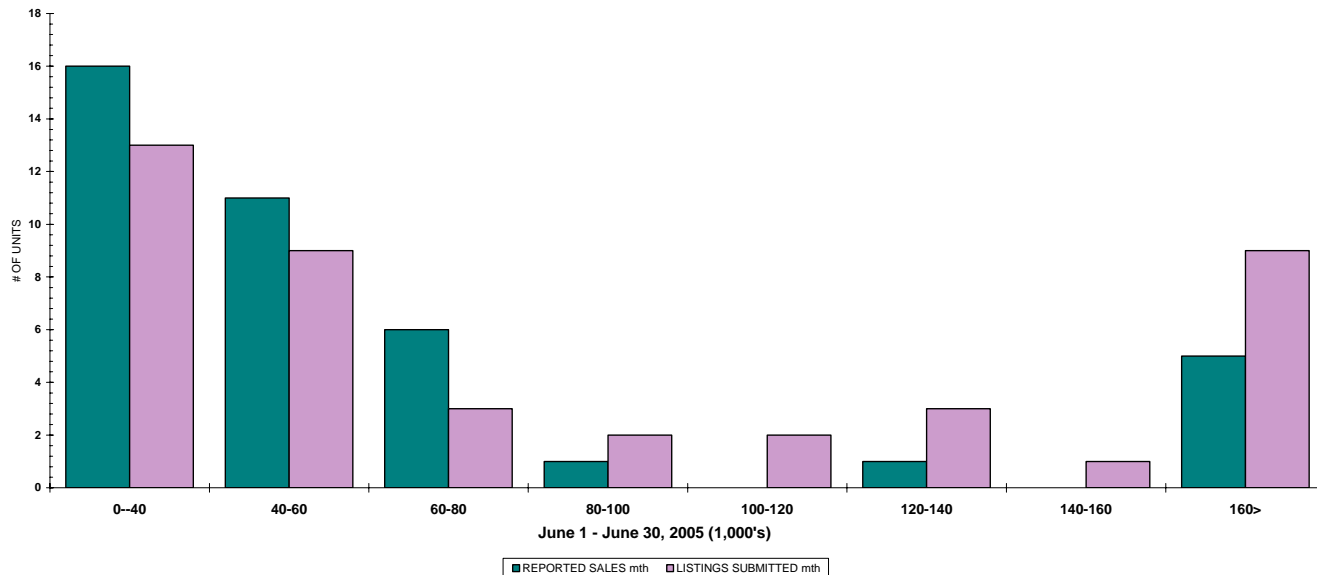
	TOTAL SALES VOLUME		Residential Single Family SALES		TOTAL LISTINGS	
	<u># of Units</u>	<u>\$ Value</u>	<u># of Units</u>	<u>\$ Value</u>	<u>Listings Taken</u>	<u>Inventory</u>
June 2005	159	\$27,342,216	51	\$10,975,250	212	844
May 2005	165	\$31,372,628	65	\$12,733,527	263	899
June 2004	166	\$30,985,514	52	\$9,311,984	223	1,178

The Shuswap Zone has **94** Members. The average of listings-per-licensee is 8.9

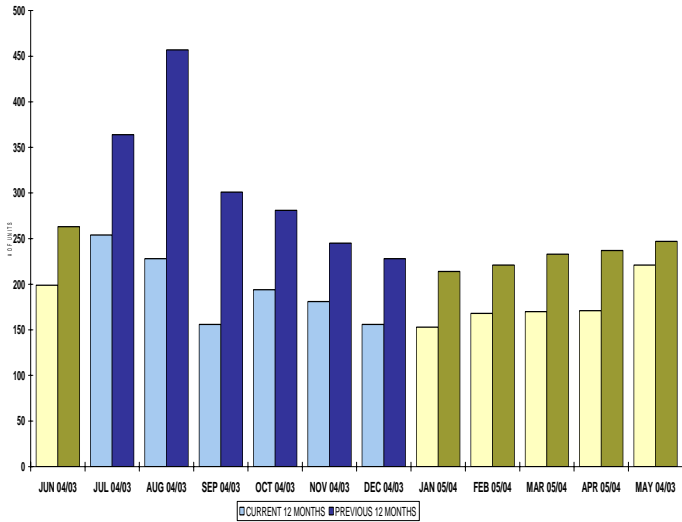
RESIDENTIAL LISTING & SALES ACTIVITY
SHUSWAP DIVISION (BY PRICE CATEGORY)



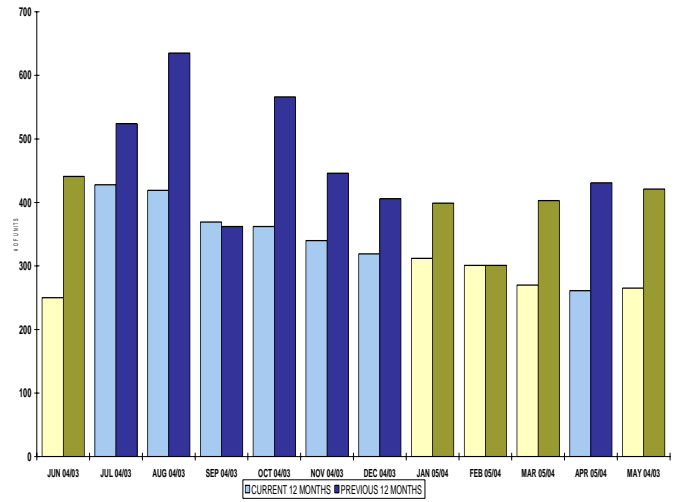
LOT LISTING & SALES ACTIVITY
SHUSWAP DIVISION (BY PRICE CATEGORY)



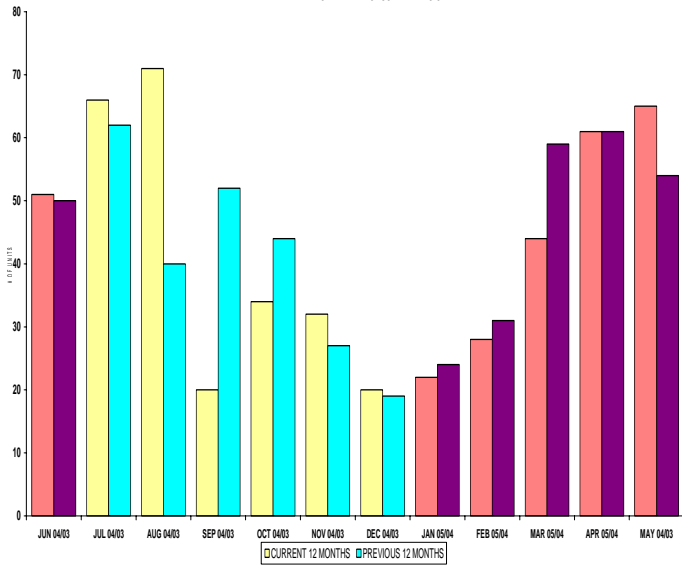
INVENTORY OF ACTIVE LISTINGS
RESIDENTIAL - SHUSWAP DIVISION



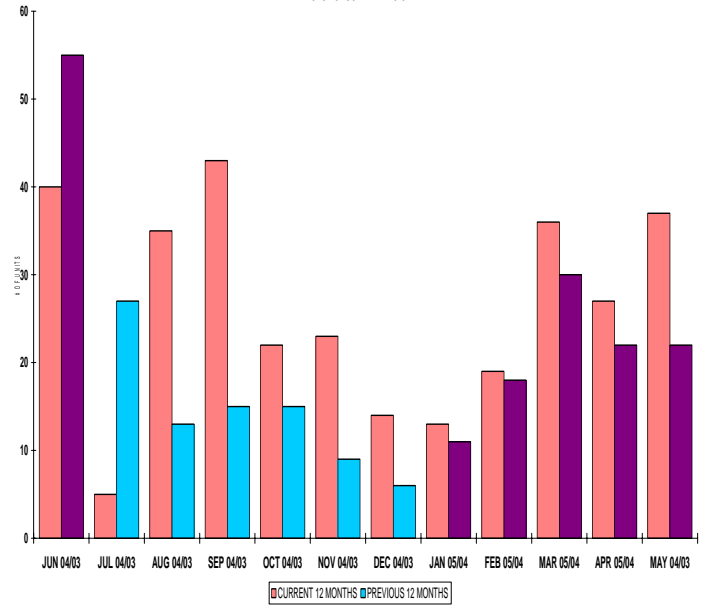
INVENTORY OF ACTIVE LISTINGS
LOTS - SHUSWAP DIVISION



NUMBER OF UNITS SOLD
RESIDENTIAL - SHUSWAP DIVISION



NUMBER OF UNITS SOLD
LOTS - SHUSWAP DIVISION



SHUSWAP ZONE

June 2005

Category	Sales	New Listings	Current Inventory	Sell/Inv. Ratio	Days To Sell
ACREAGE	6	13	59	10.17%	378
ACREAGE/HOUSE	18	23	89	20.22%	87
LOTS	34	29	191	17.80%	156
RESIDENTIAL	51	94	199	25.63%	91
AVERAGE HOUSE PRICE \$221,500			MEDIAN HOUSE PRICE \$195,000		

Lots Include: Acreage Waterfront, Lots and Lots Waterfront