

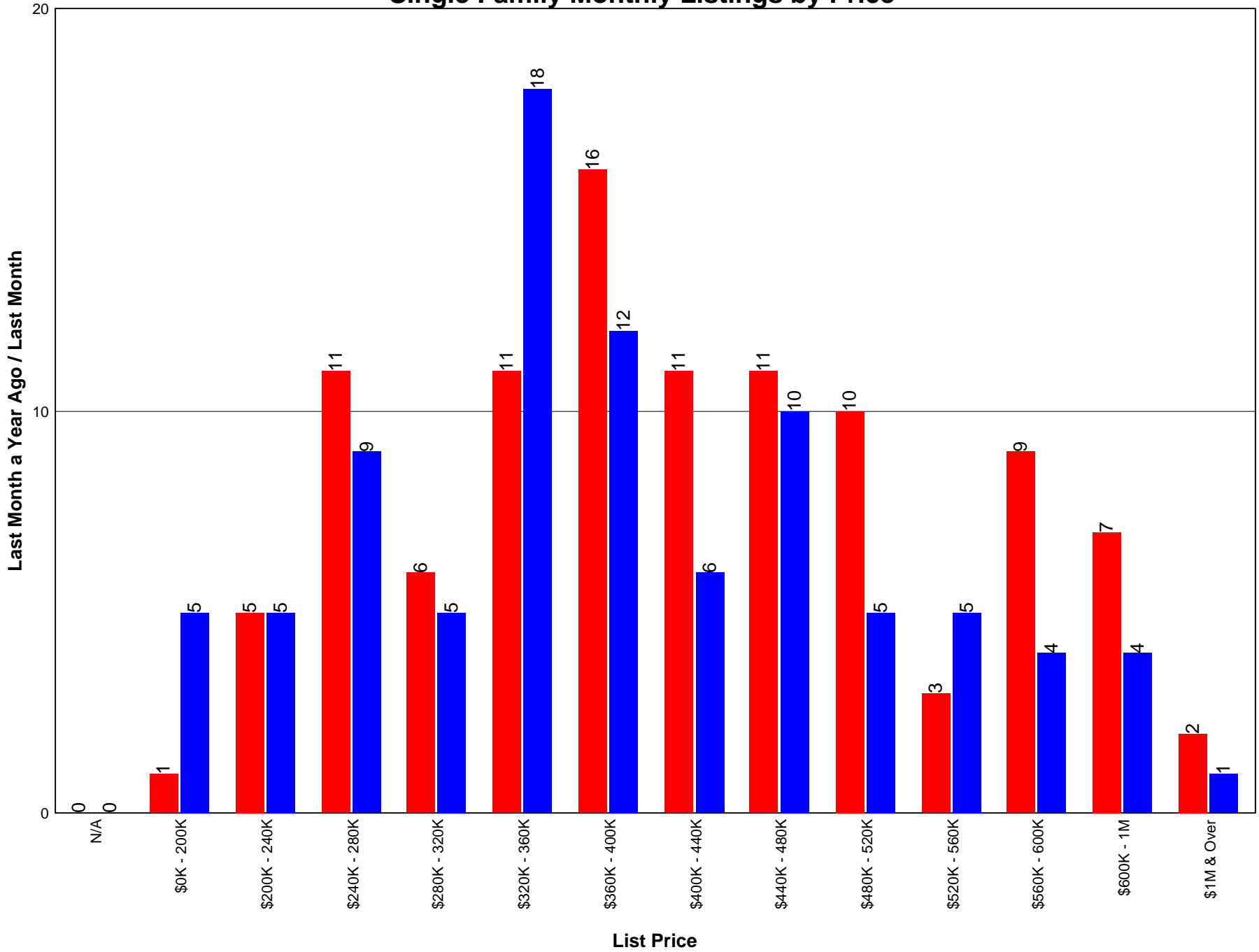
Shuswap Monthly Statistics  
Graphs  
June 2009

# Table of Contents

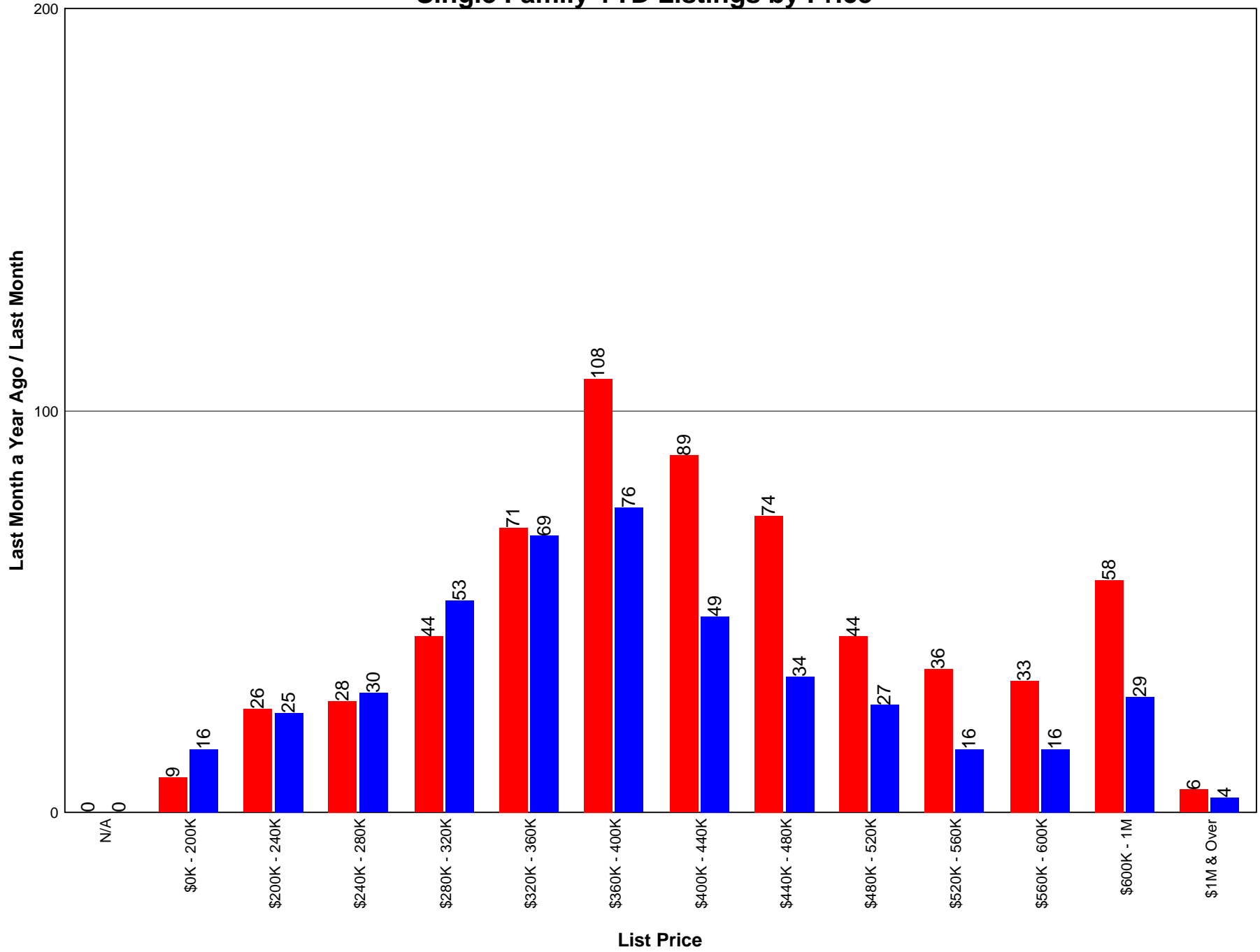
---

Table of Contents	2
Single Family Monthly Listings by Price	3
Single Family YTD Listings by Price	4
Single Family Monthly Sales by Price	5
Single Family YTD Sales by Price	6
SF Sub Area Avg Prices YTD	7
Single Family Residential Average Prices	8
Lots/Acreage Monthly Listings by Price	9
Lots/Acreage YTD Listings by Price	10
Lots/Acreage Monthly Sales by Price	11
Lots/Acreage YTD Sales by Price	12
Condo Sub Area Average Prices YTD	13
Townhouse Sub Area Average Prices YTD	14
3-Year Inventory of Active Single Family Residential Listings	15
3-Year Inventory of Active Lots	16
Million-Dollar Active Residential Listings	17
Million-Dollar Residential Sales (Last 2 Months)	18

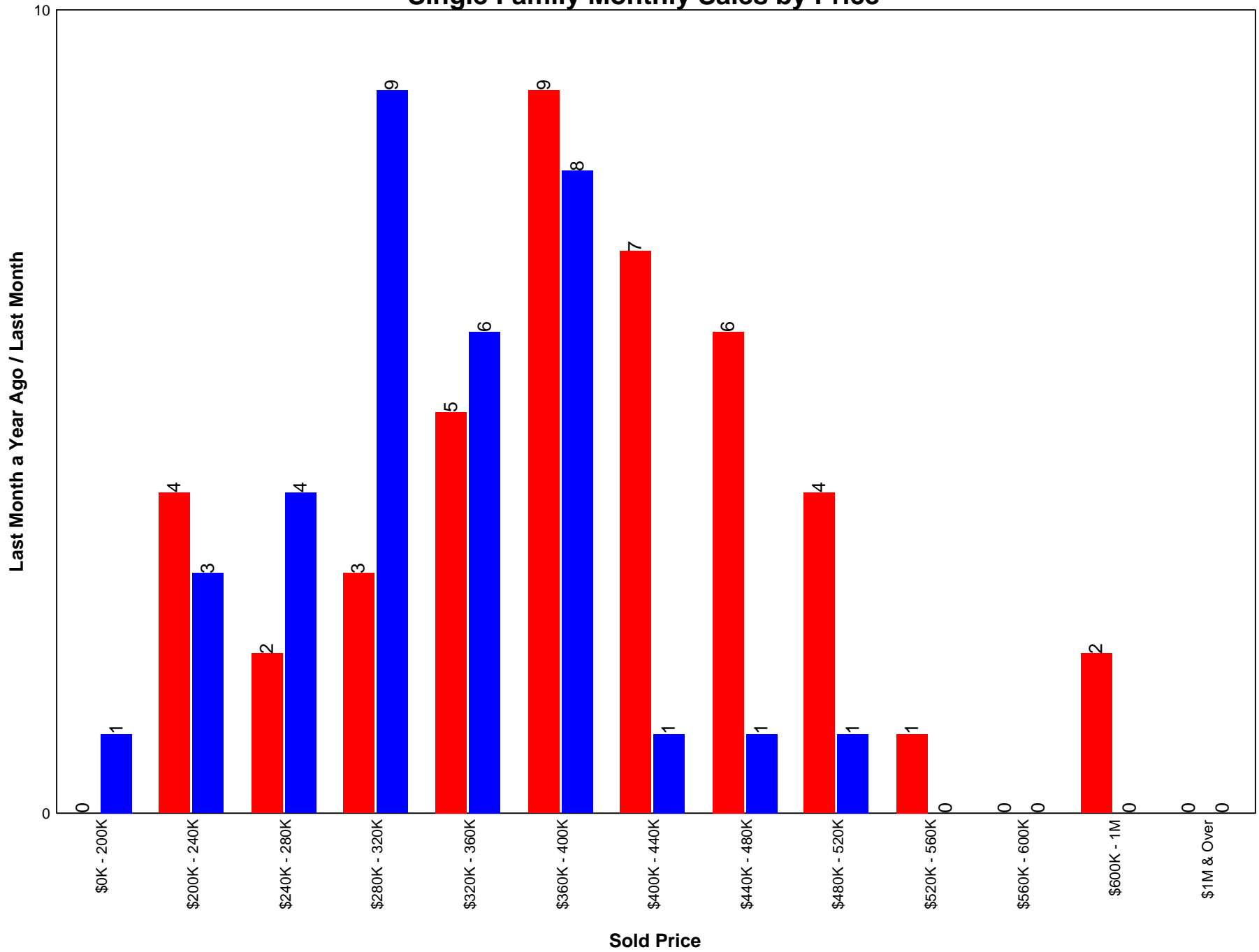
### Single Family Monthly Listings by Price



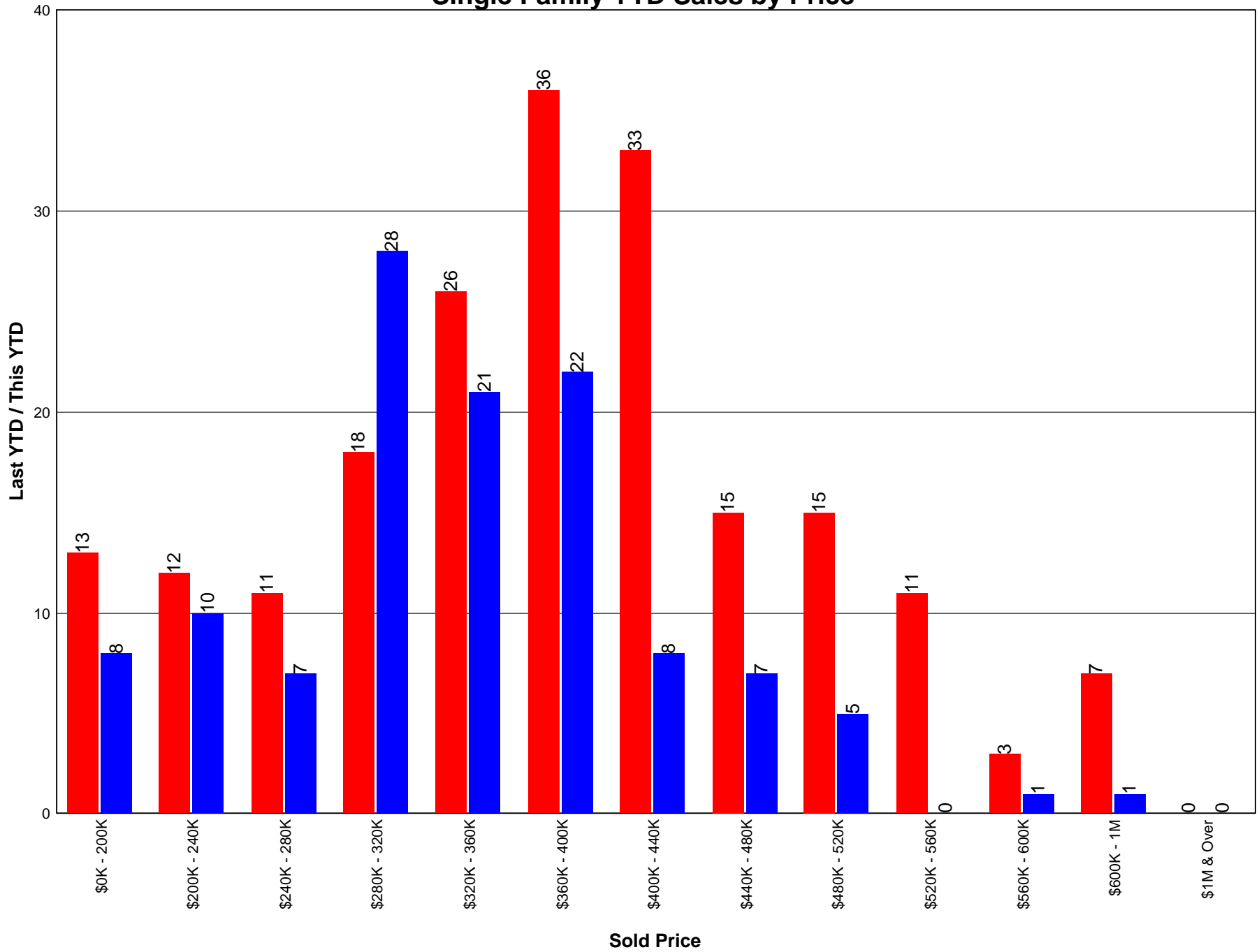
# Single Family YTD Listings by Price



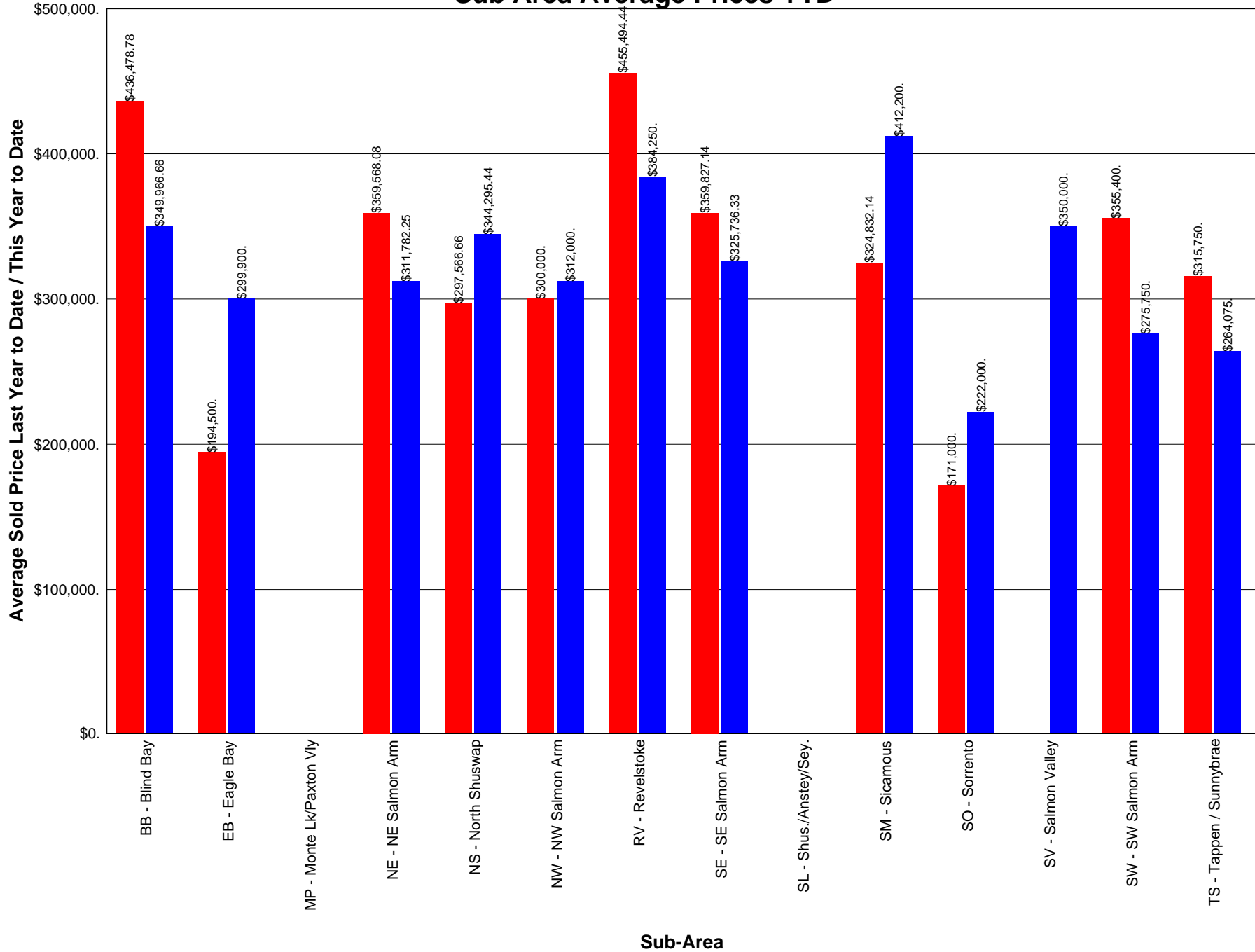
### Single Family Monthly Sales by Price



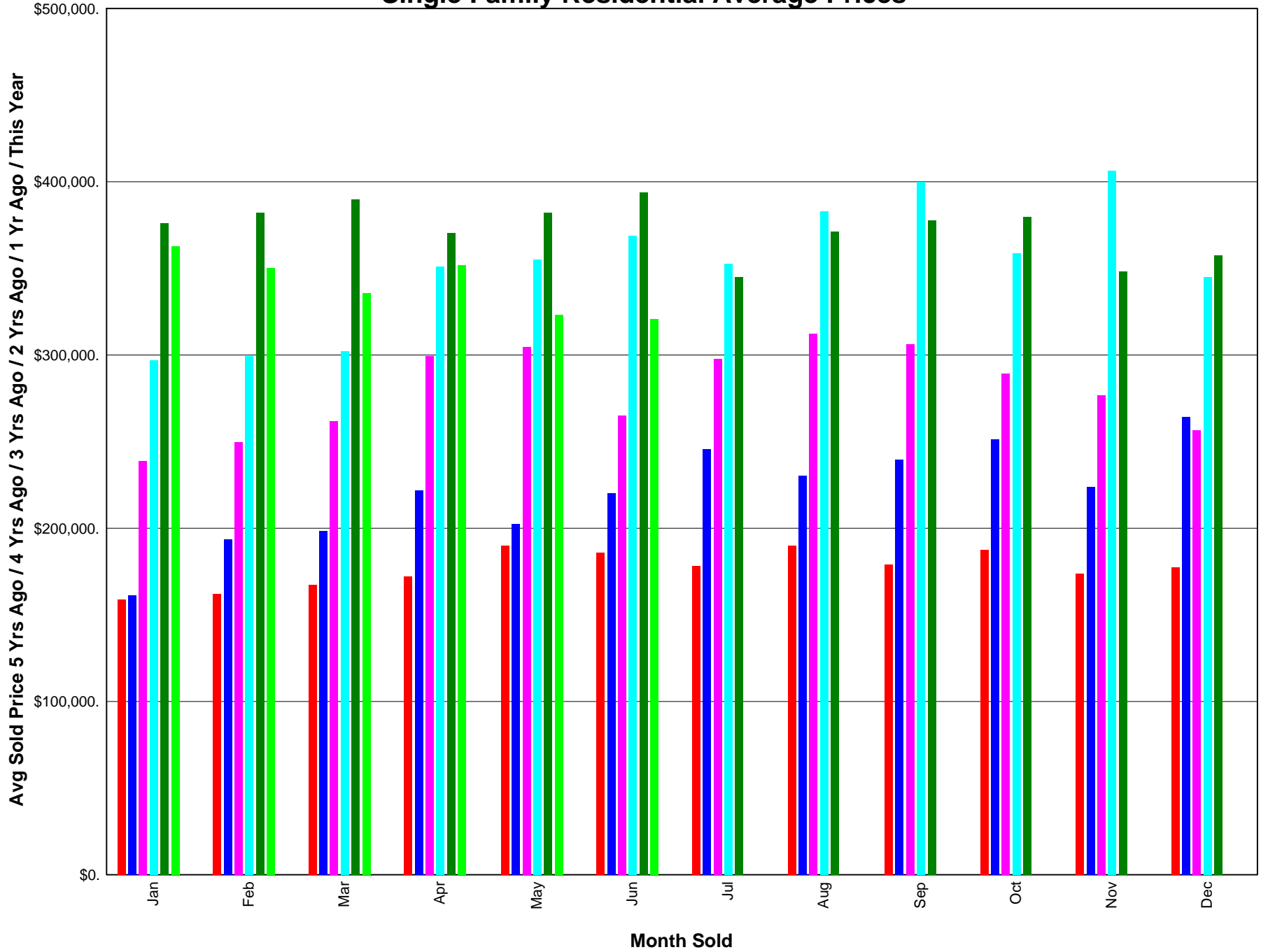
### Single Family YTD Sales by Price



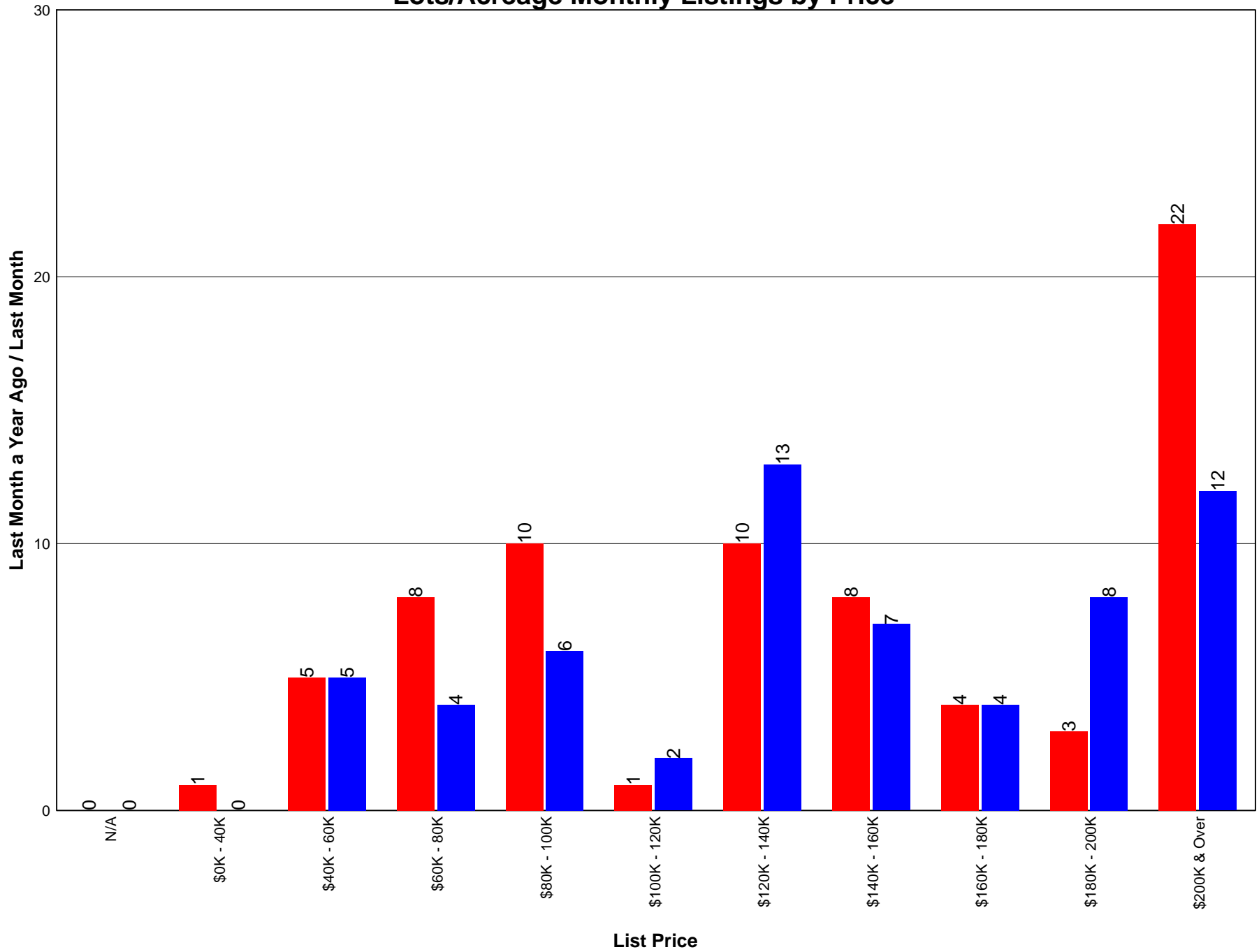
### Sub Area Average Prices YTD



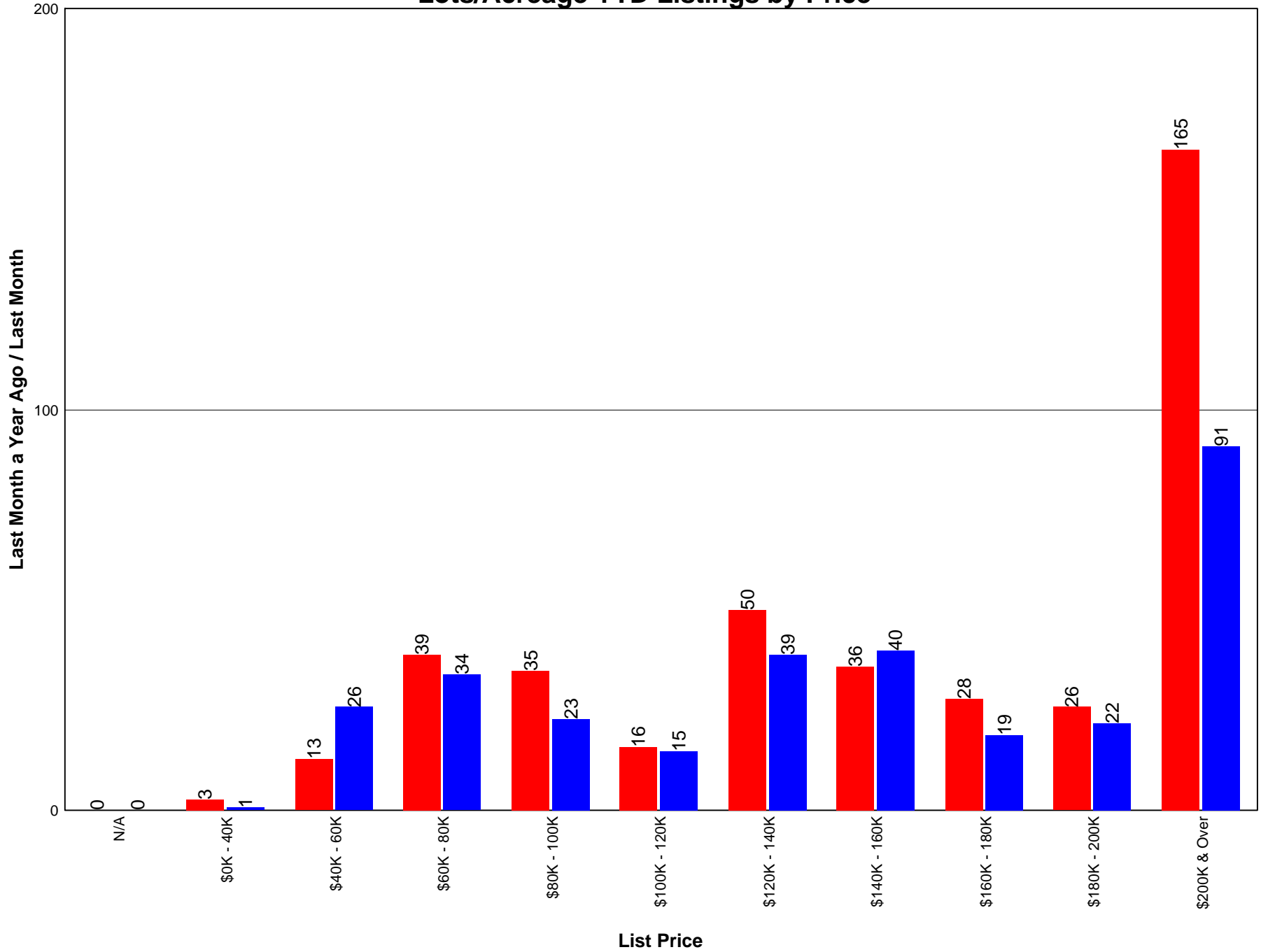
# Single Family Residential Average Prices



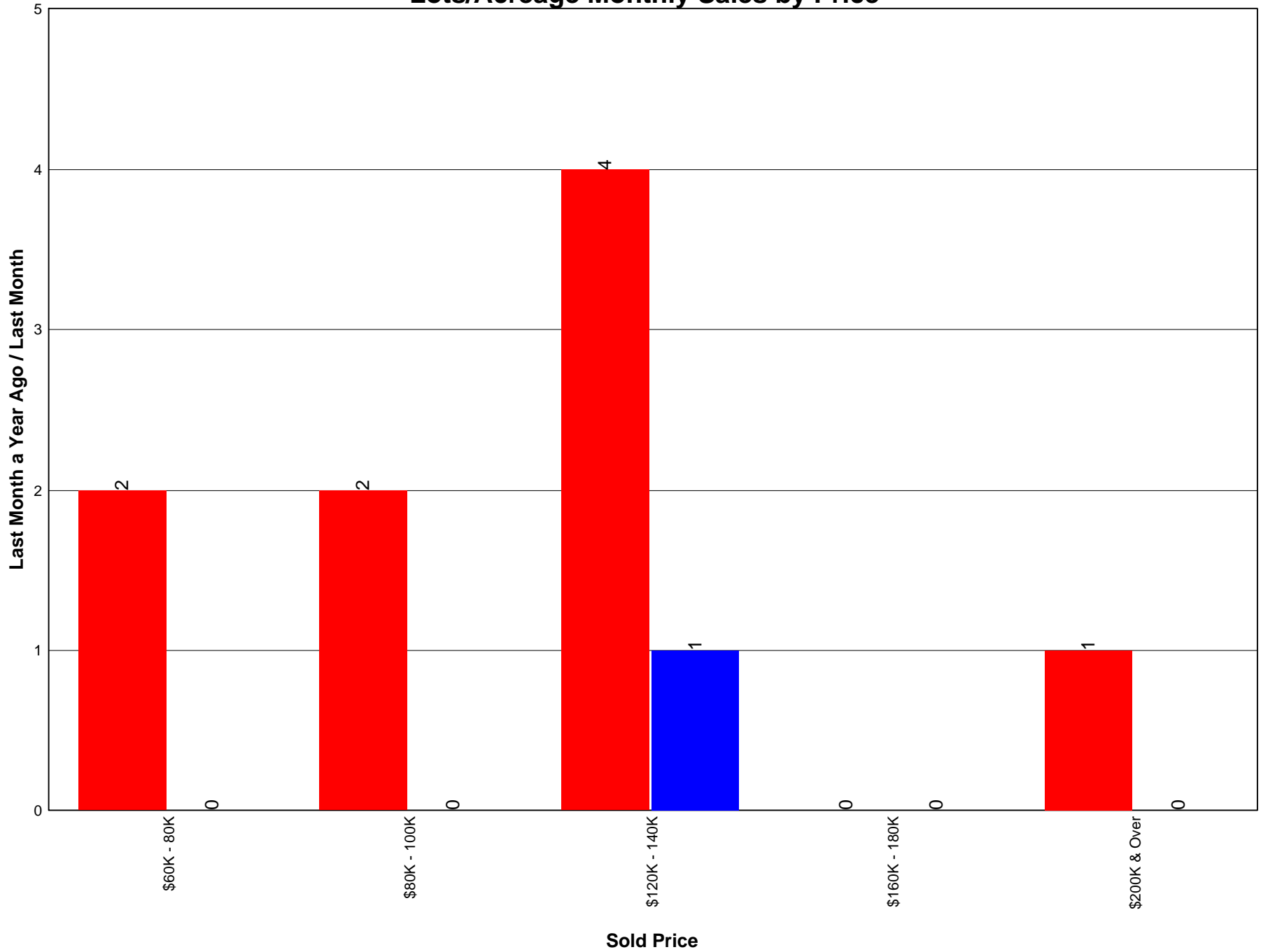
### Lots/Acreage Monthly Listings by Price



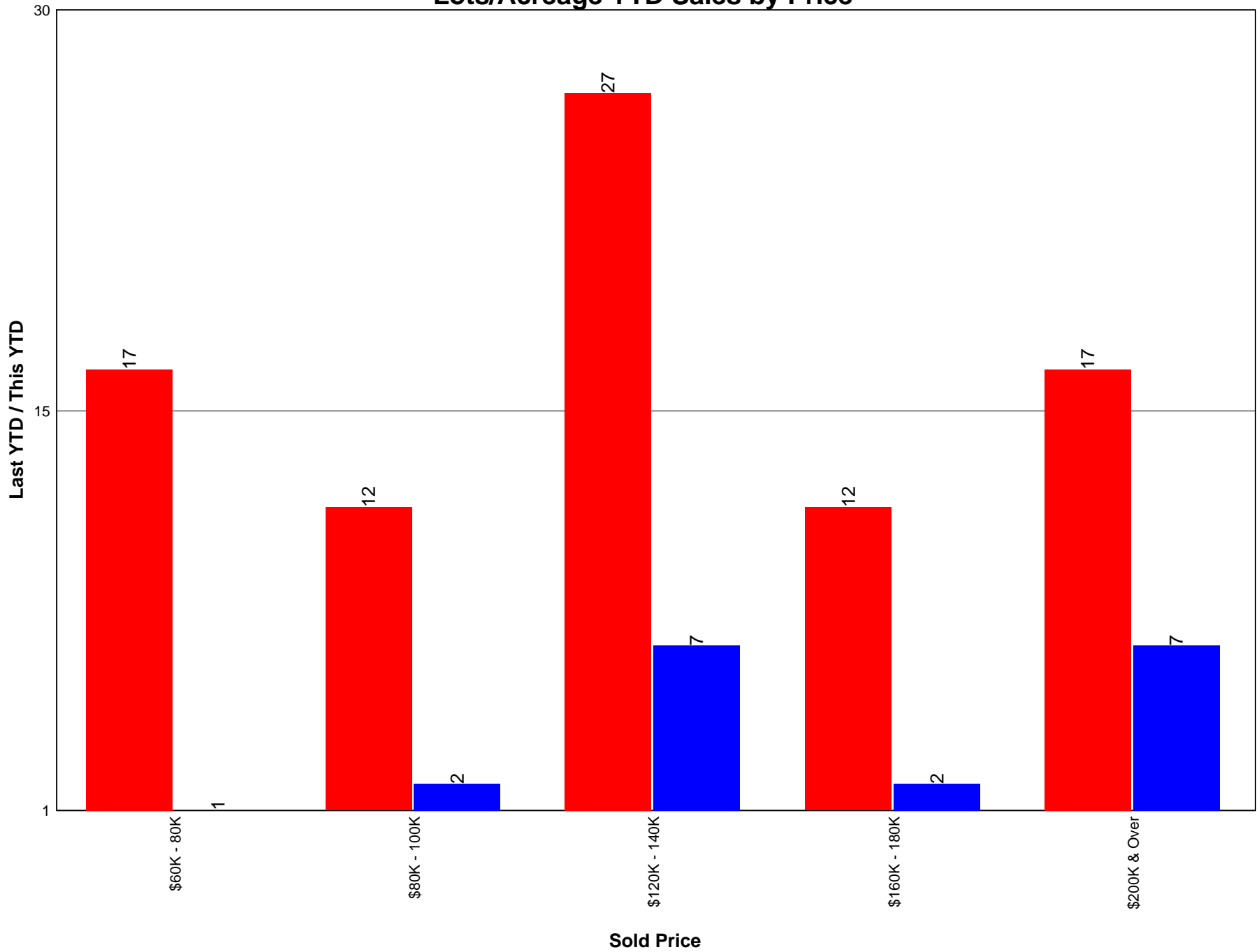
### Lots/Acreage YTD Listings by Price



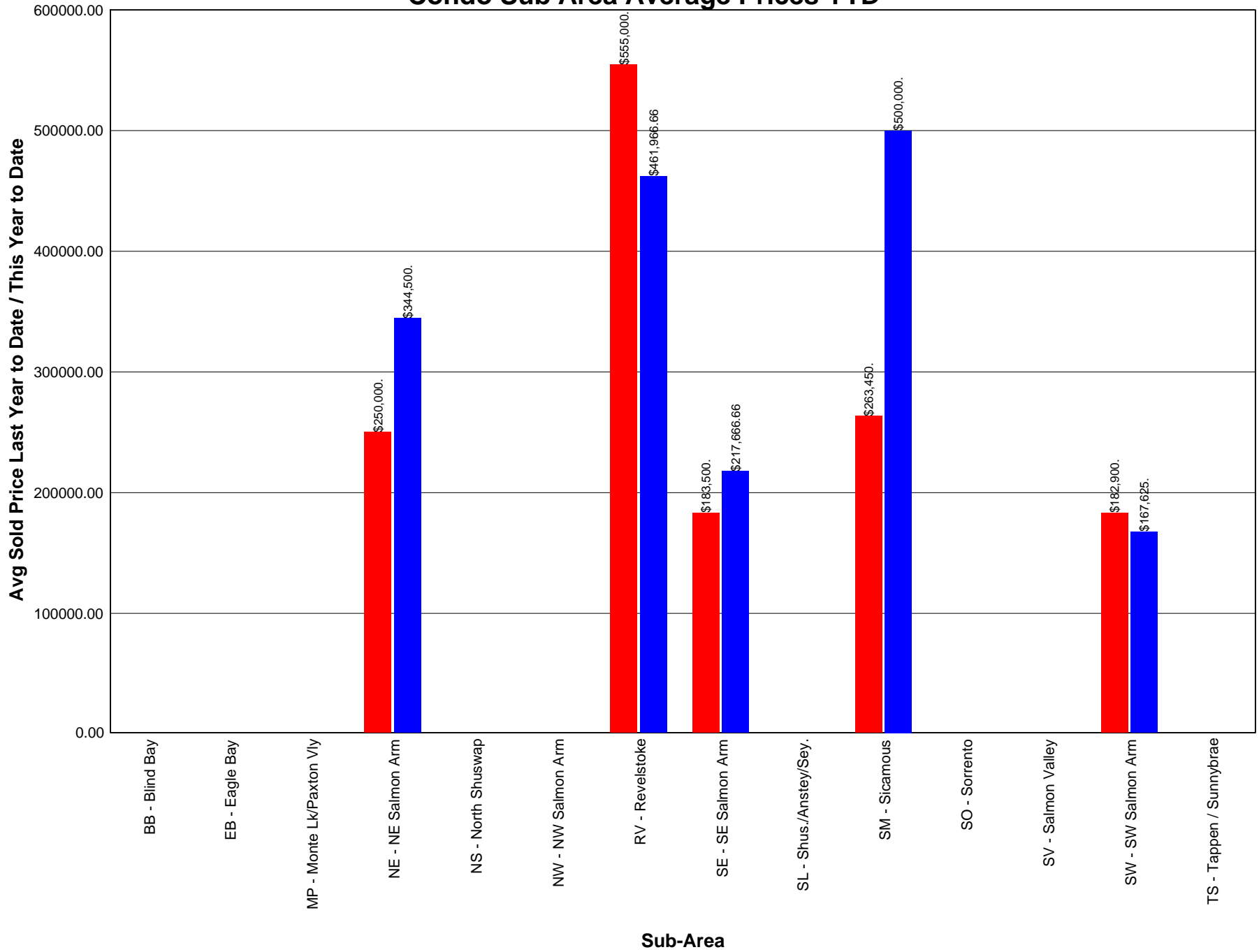
### Lots/Acreage Monthly Sales by Price



### Lots/Acreage YTD Sales by Price

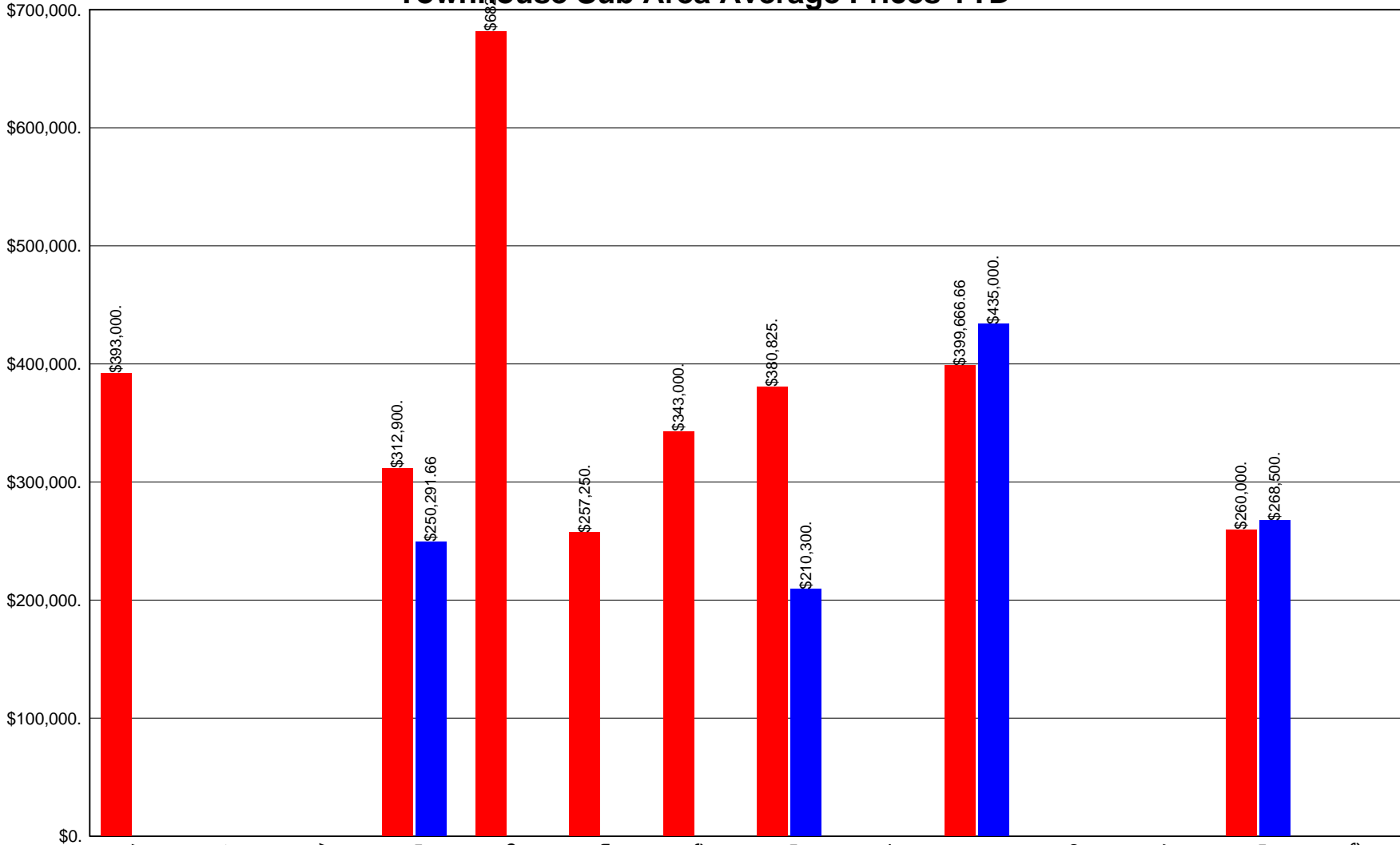


### Condo Sub Area Average Prices YTD



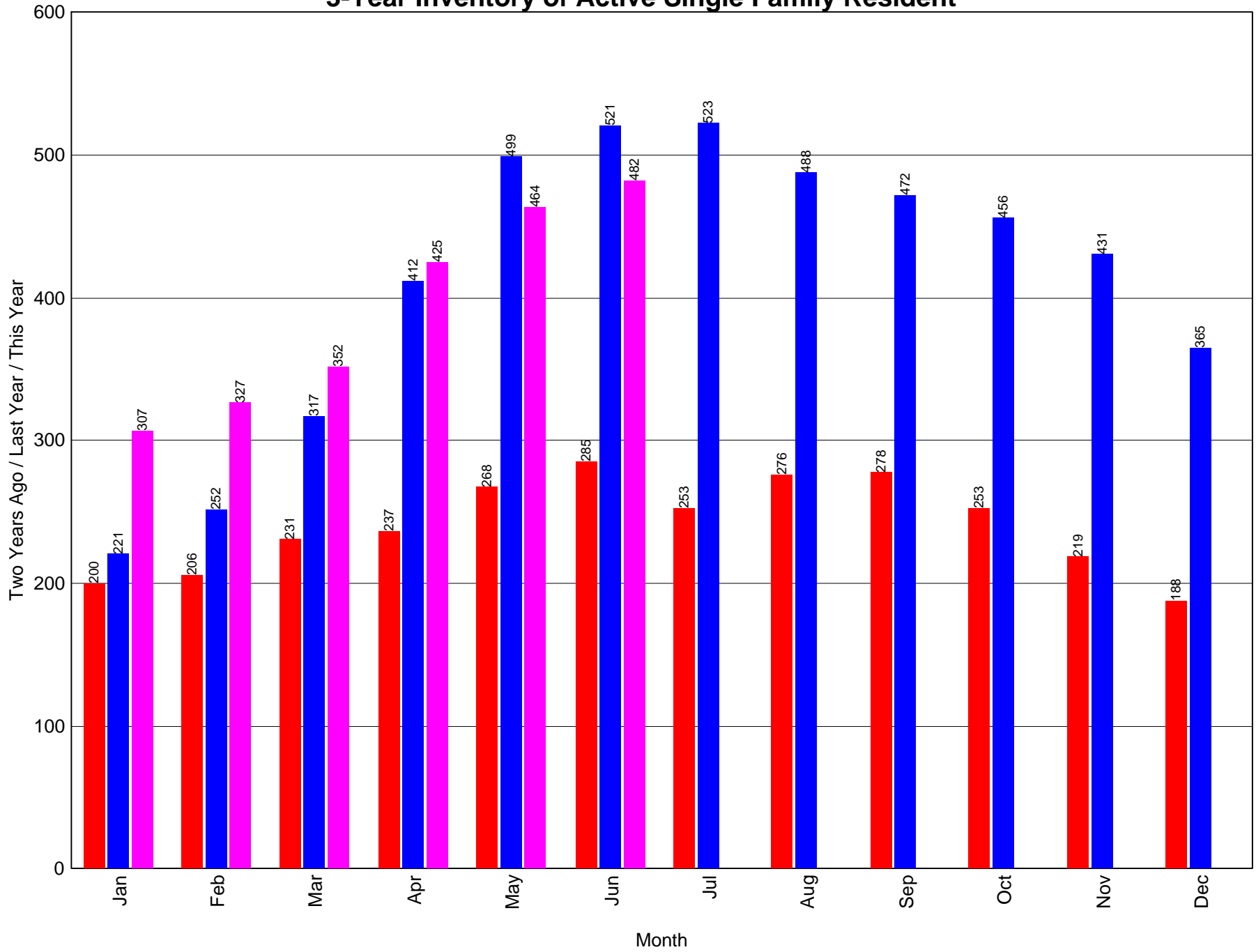
# Townhouse Sub Area Average Prices YTD

Avg Sold Price Last YTD / This Year to Date

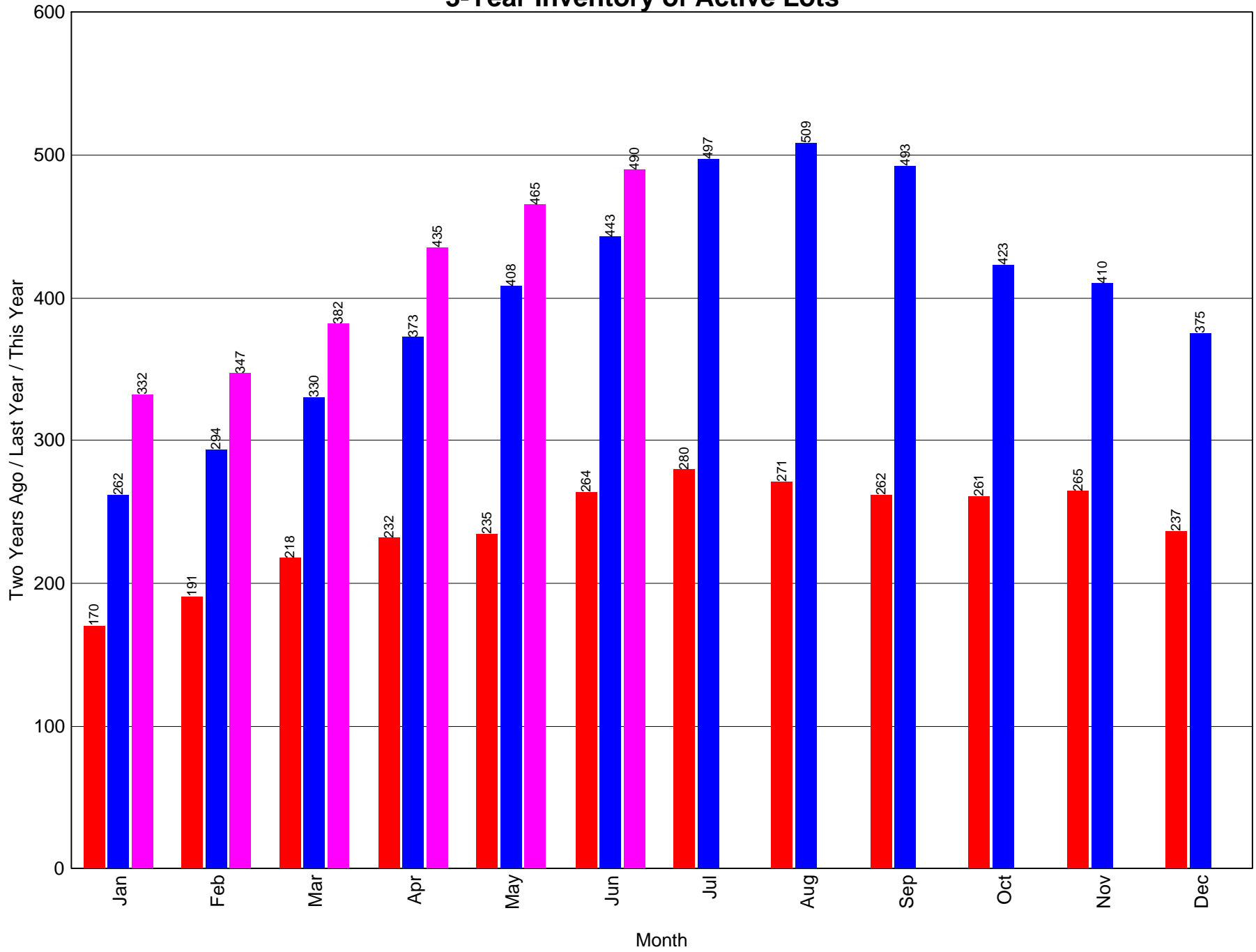


Sub-Area

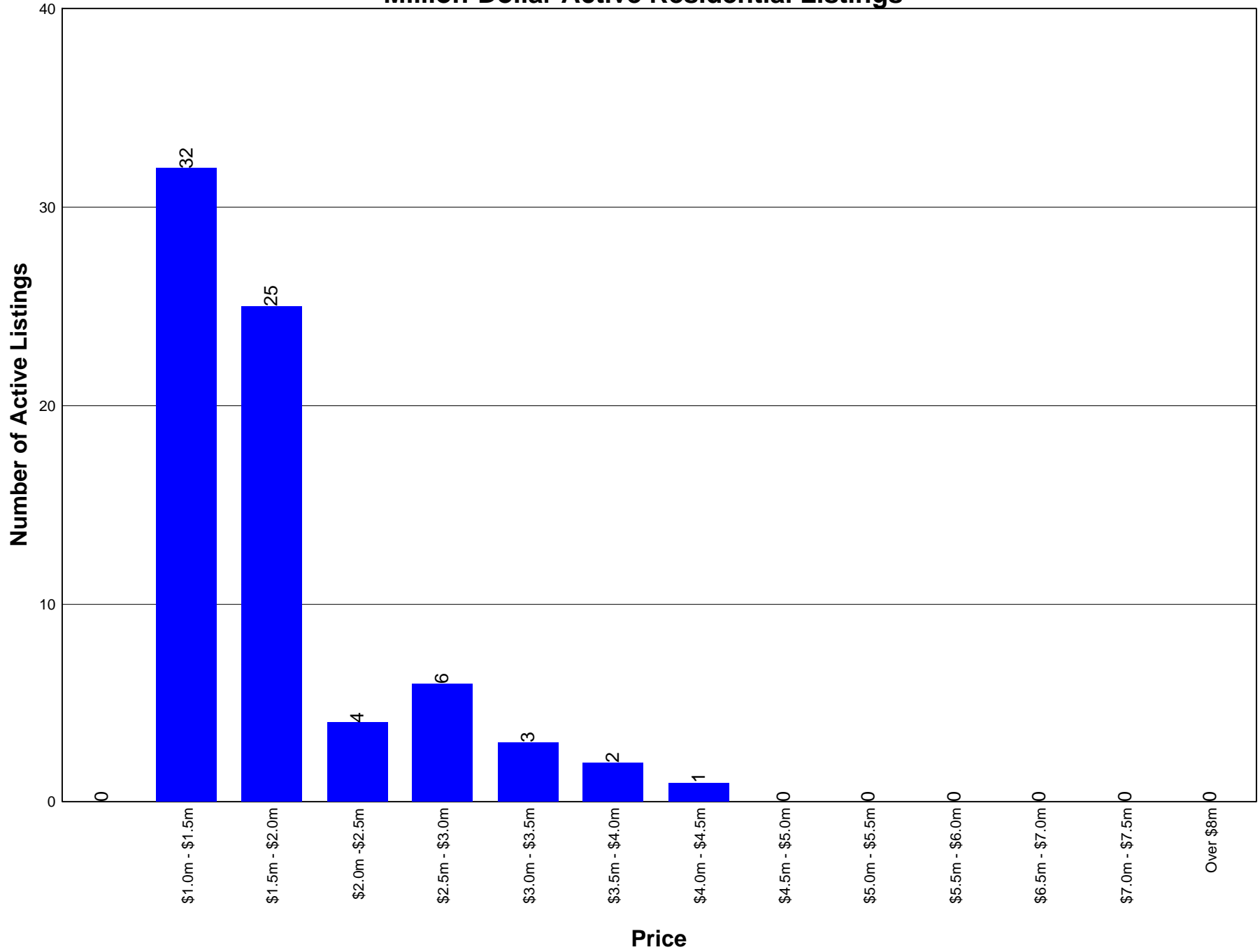
### 3-Year Inventory of Active Single Family Resident



### 3-Year Inventory of Active Lots



### Million-Dollar Active Residential Listings



### Million-Dollar Residential Sales (Last 2 Months)

