

SHUSWAP ZONE

STAT - O - GRAM

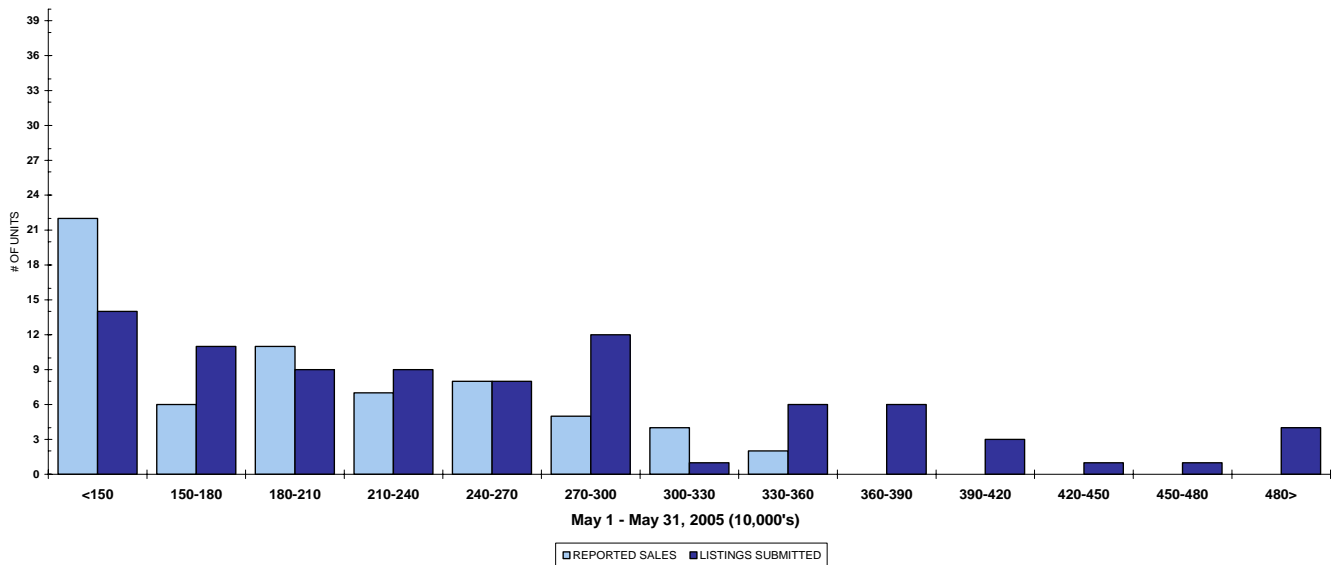
May 2005

QUICK SUMMARY

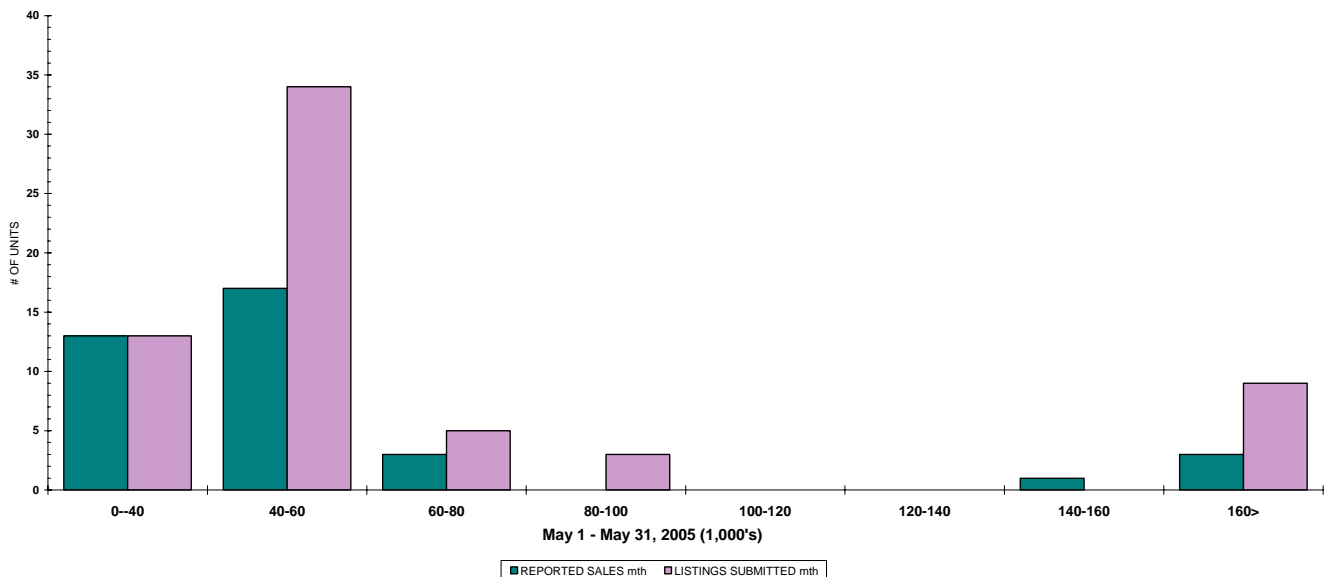
	TOTAL SALES VOLUME		RESIDENTIAL SALES		TOTAL LISTINGS	
	<u># of Units</u>	<u>\$ Value</u>	<u># of Units</u>	<u>\$ Value</u>	<u>Listings Taken</u>	<u>Inventory</u>
May 2005	165	\$31,372,628	65	\$12,733,527	263	899
April 2005	128	\$22,774,425	61	\$12,659,000	251	831
May 2004	134	\$23,924,254	62	\$10,325,712	223	1,146

The Shuswap Zone has **93** Members. The average of listings-per-licensee is 9.6

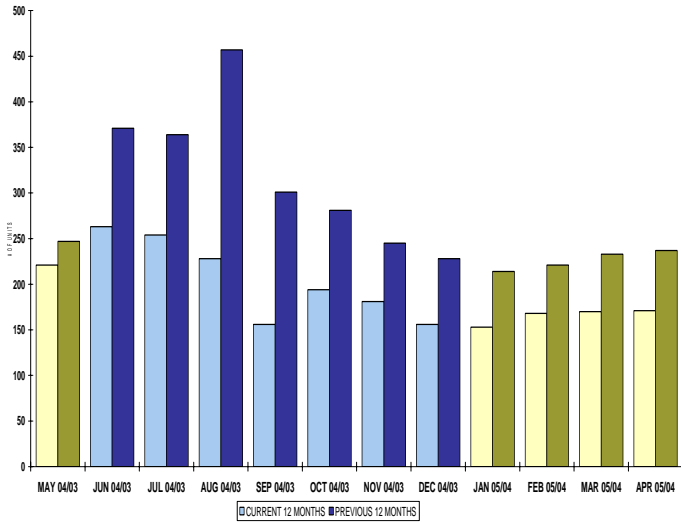
RESIDENTIAL LISTING & SALES ACTIVITY
SHUSWAP DIVISION (BY PRICE CATEGORY)



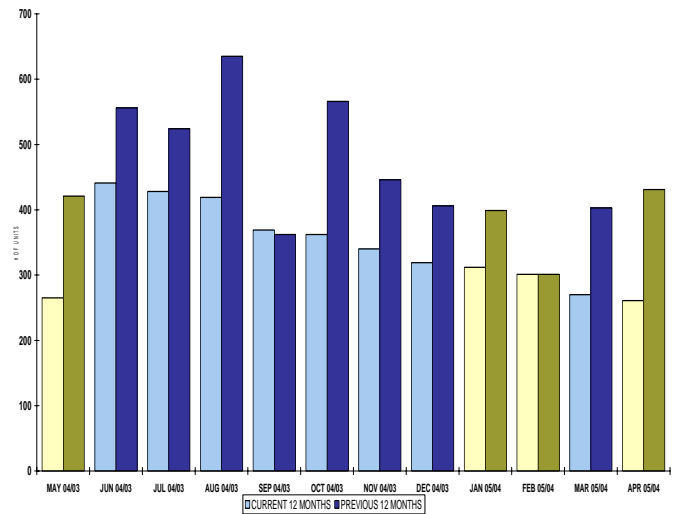
LOT LISTING & SALES ACTIVITY
SHUSWAP DIVISION (BY PRICE CATEGORY)



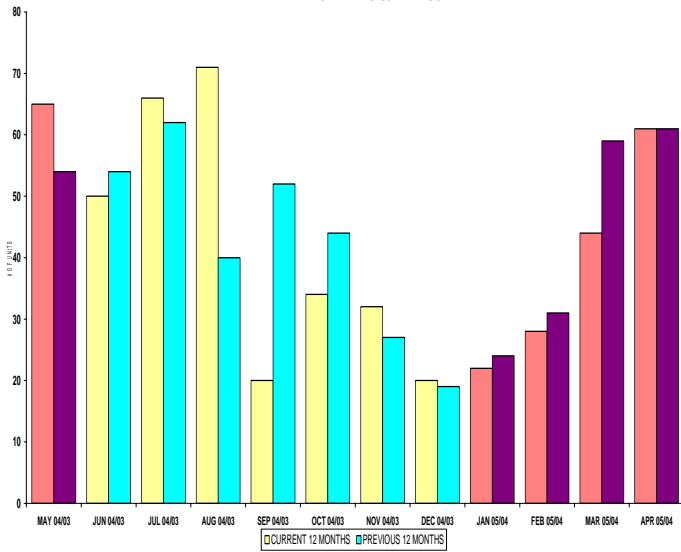
INVENTORY OF ACTIVE LISTINGS
RESIDENTIAL - SHUSWAP DIVISION



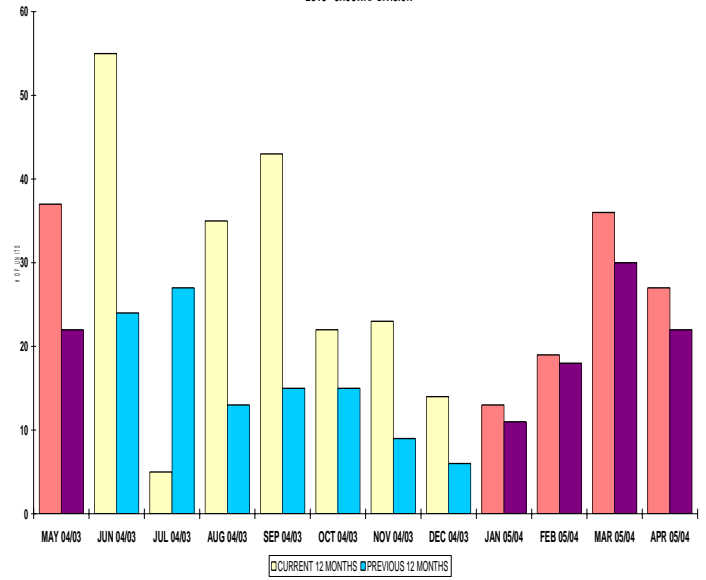
INVENTORY OF ACTIVE LISTINGS
LOTS - SHUSWAP DIVISION



NUMBER OF UNITS SOLD
RESIDENTIAL - SHUSWAP DIVISION



NUMBER OF UNITS SOLD
LOTS - SHUSWAP DIVISION



SHUSWAP ZONE

May 2005

Category	Sales	New Listings	Current Inventory	Sell/Inv. Ratio	Days To Sell
ACREAGE	6	10	61	8.06%	198
ACREAGE/HOUSE	14	30	93	15.05%	95
LOTS	31	54	204	15.20%	253
RESIDENTIAL	65	85	221	29.41%	82
AVERAGE HOUSE PRICE \$195,900		MEDIAN HOUSE PRICE \$200,000			

Lots Include: Acreage Waterfront, Lots and Lots Waterfront