

SHUSWAP ZONE

STAT - O - GRAM

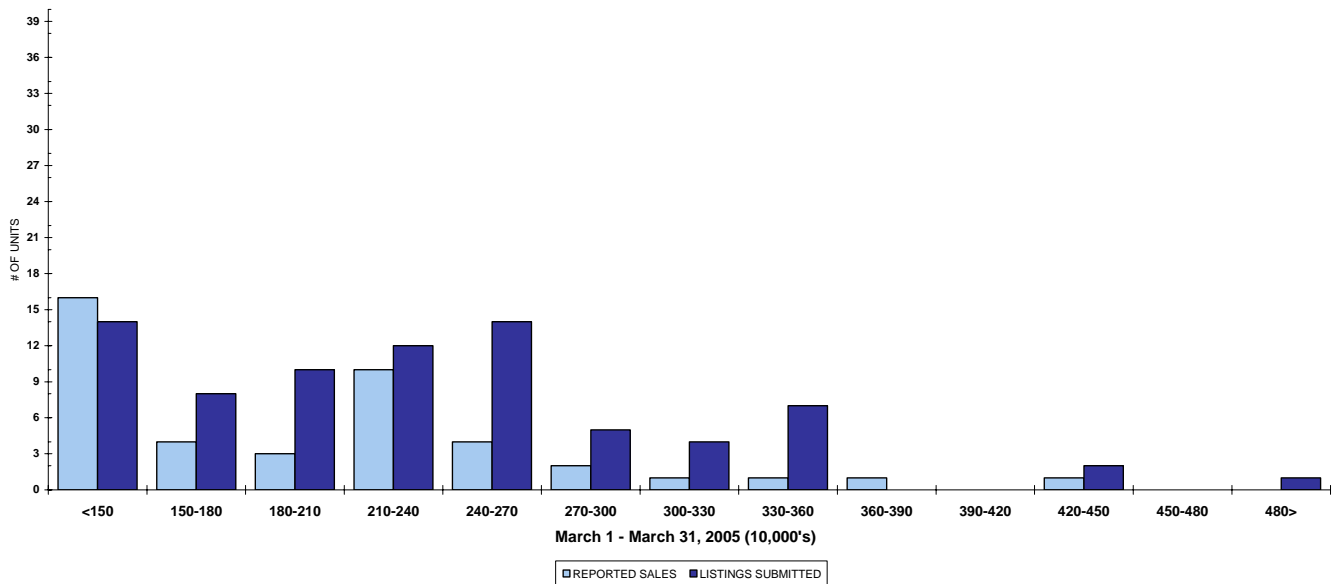
March 2005

QUICK SUMMARY

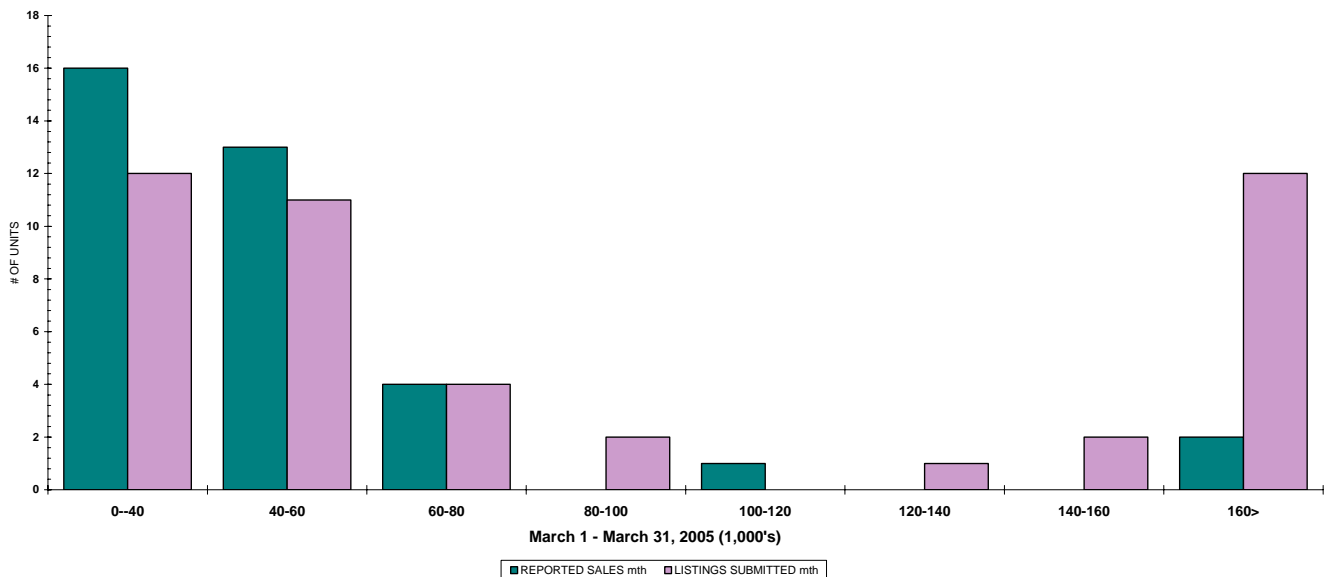
| | TOTAL SALES VOLUME | | RESIDENTIAL SALES | | TOTAL LISTINGS | |
|---------------|--------------------|-----------------|-------------------|-----------------|-----------------------|------------------|
| | <u># of Units</u> | <u>\$ Value</u> | <u># of Units</u> | <u>\$ Value</u> | <u>Listings Taken</u> | <u>Inventory</u> |
| March 2005 | 118 | \$19,360,637 | 44 | \$8,383,602 | 210 | 825 |
| February 2005 | 68 | \$11,125,050 | 28 | \$5,270,300 | 136 | 868 |
| March 2004 | 125 | \$18,700,003 | 58 | \$9,492,600 | 198 | 1,094 |

The Shuswap Zone has **90** Members. The average of listings-per-licensee is 9.1

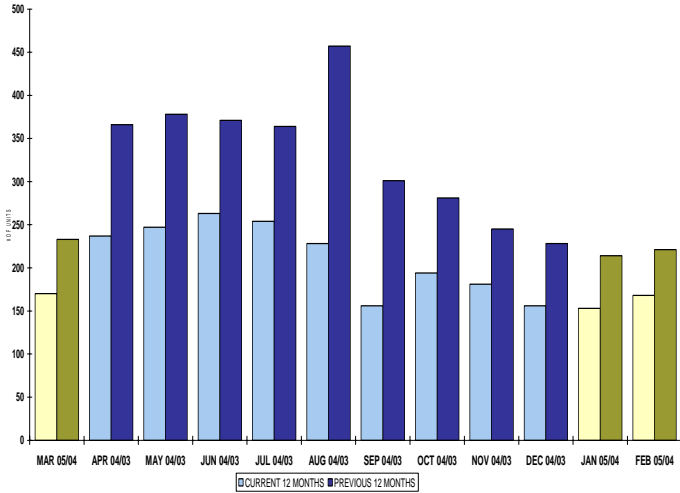
RESIDENTIAL LISTING & SALES ACTIVITY
SHUSWAP DIVISION (BY PRICE CATEGORY)



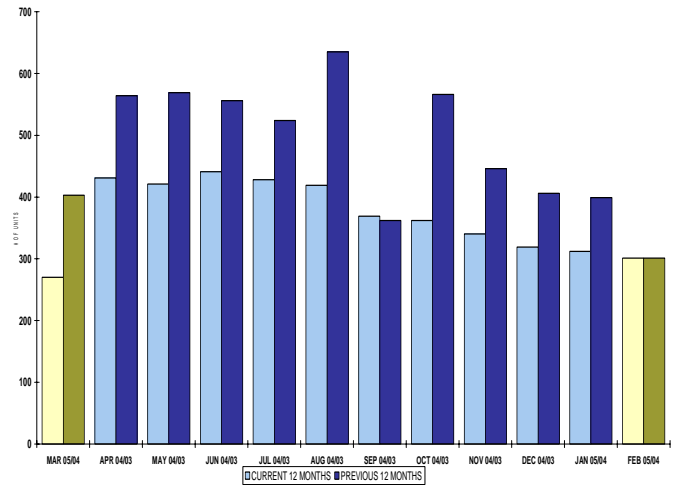
LOT LISTING & SALES ACTIVITY
SHUSWAP DIVISION (BY PRICE CATEGORY)



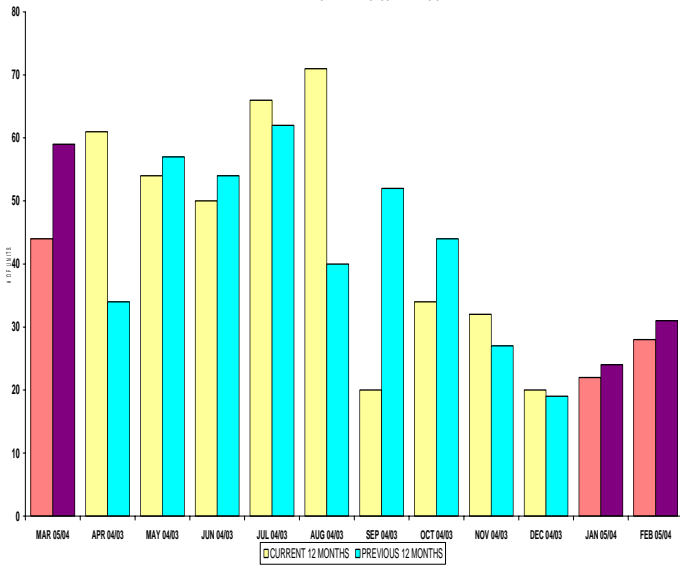
INVENTORY OF ACTIVE LISTINGS
RESIDENTIAL - SHUSWAP DIVISION



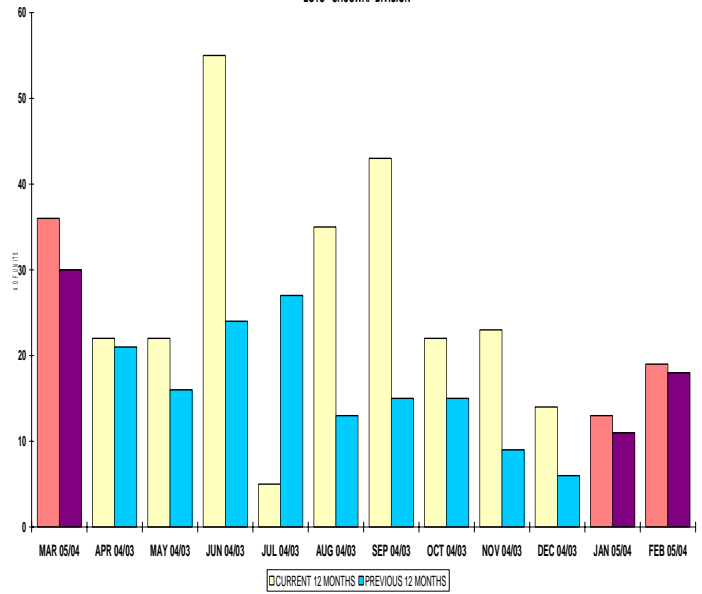
INVENTORY OF ACTIVE LISTINGS
LOTS - SHUSWAP DIVISION



NUMBER OF UNITS SOLD
RESIDENTIAL - SHUSWAP DIVISION



NUMBER OF UNITS SOLD
LOTS - SHUSWAP DIVISION



SHUSWAP ZONE

March 2005

| Category | Sales | New Listings | Current Inventory | Sell/Inv. Ratio | Days To Sell |
|--------------------------------------|-------|--------------|-------------------------------------|-----------------|--------------|
| ACREAGE | 2 | 13 | 60 | 3.33% | 1434 |
| ACREAGE/HOUSE | 14 | 26 | 83 | 16.87% | 90 |
| LOTS | 34 | 31 | 257 | 13.23% | 257 |
| RESIDENTIAL | 44 | 79 | 170 | 25.88% | 91 |
| AVERAGE HOUSE PRICE \$190,536 | | | MEDIAN HOUSE PRICE \$191,250 | | |

Lots Include: Acreage Waterfront, Lots and Lots Waterfront