

SHUSWAP ZONE

STAT - O - GRAM

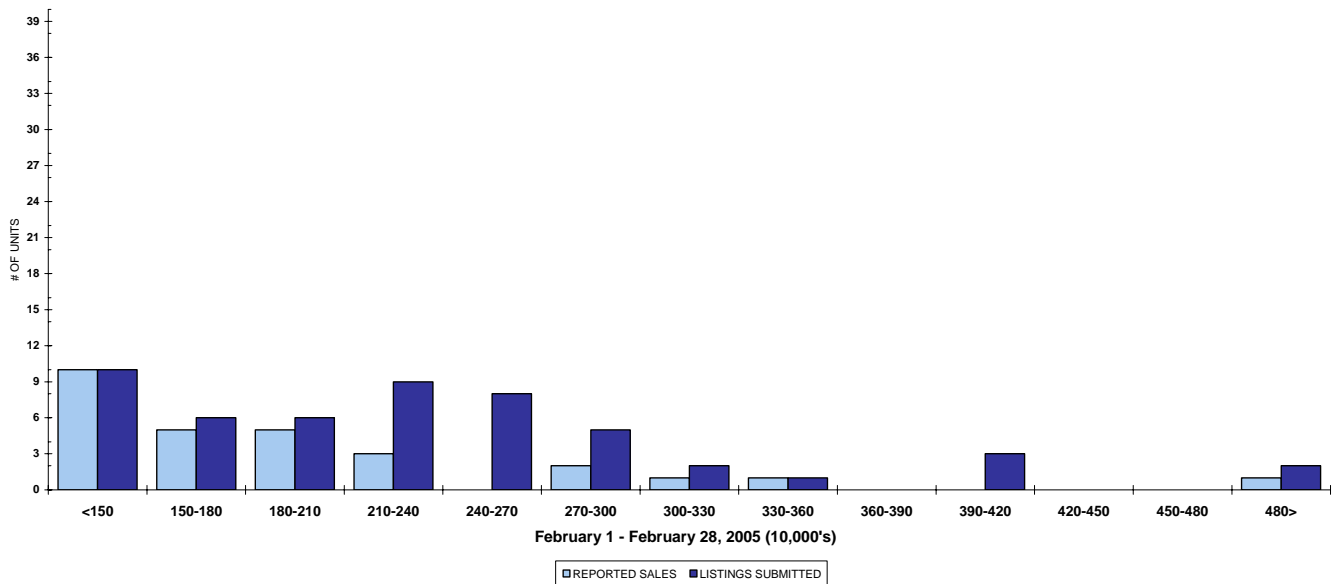
February 2005

QUICK SUMMARY

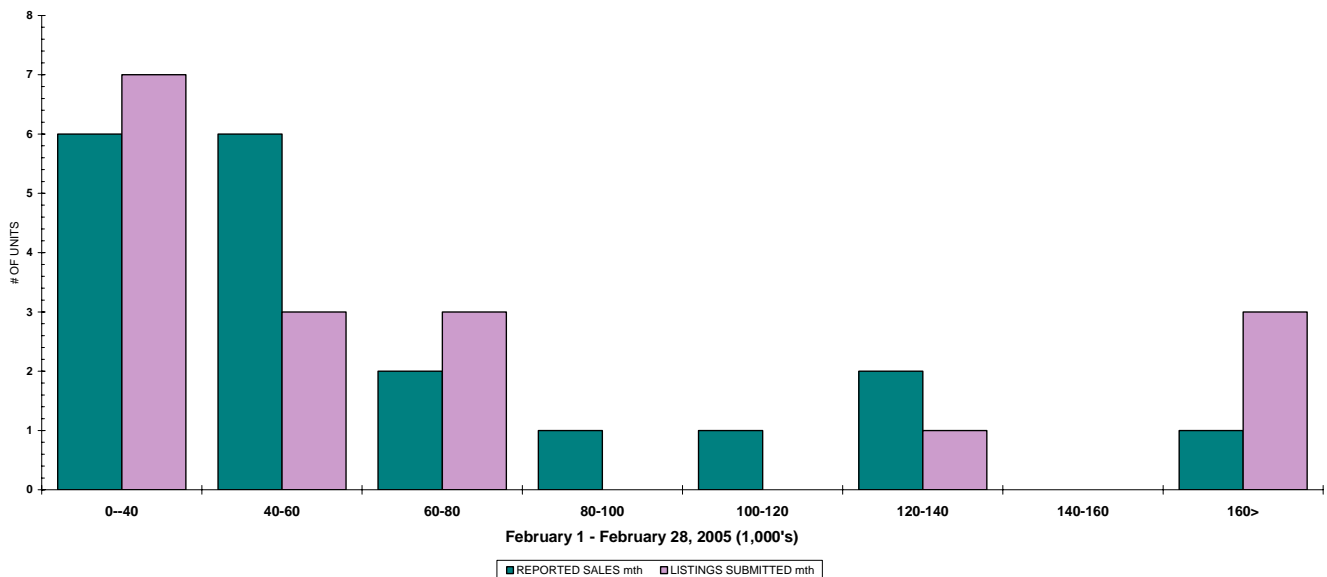
	TOTAL SALES VOLUME		RESIDENTIAL SALES		TOTAL LISTINGS	
	<u># of Units</u>	<u>\$ Value</u>	<u># of Units</u>	<u>\$ Value</u>	<u>Listings Taken</u>	<u>Inventory</u>
February 2005	68	\$11,125,050	28	\$5,270,300	136	868
January 2005	56	\$8,093,926	22	\$3,476,400	104	834
February 2004	70	\$10,356,500	31	\$4,897,400	131	1,072

The Shuswap Zone has **89** Members. The average of listings-per-licensee is 9.6

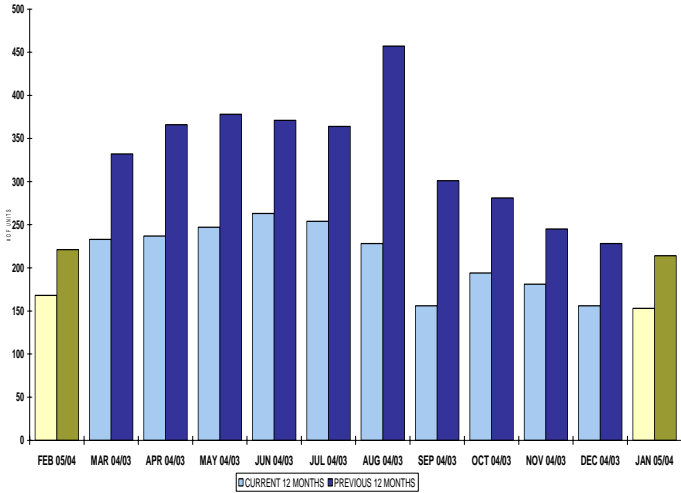
RESIDENTIAL LISTING & SALES ACTIVITY
SHUSWAP DIVISION (BY PRICE CATEGORY)



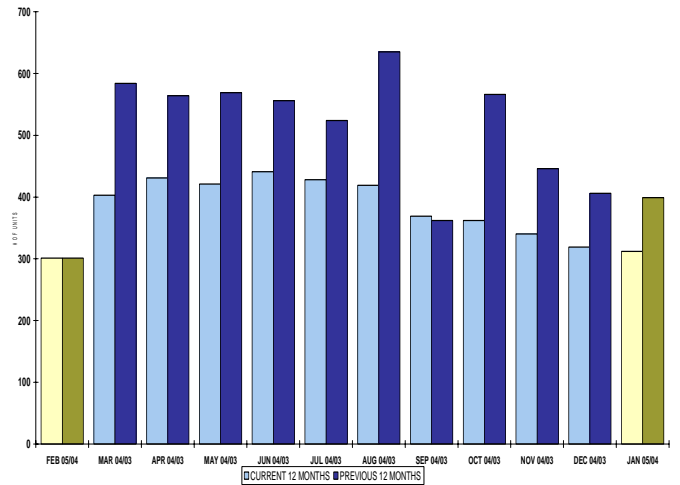
LOT LISTING & SALES ACTIVITY
SHUSWAP DIVISION (BY PRICE CATEGORY)



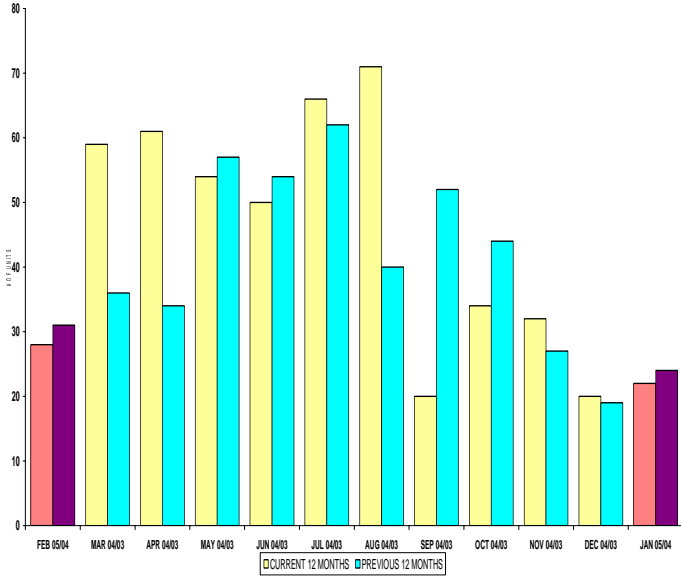
INVENTORY OF ACTIVE LISTINGS
RESIDENTIAL - SHUSWAP DIVISION



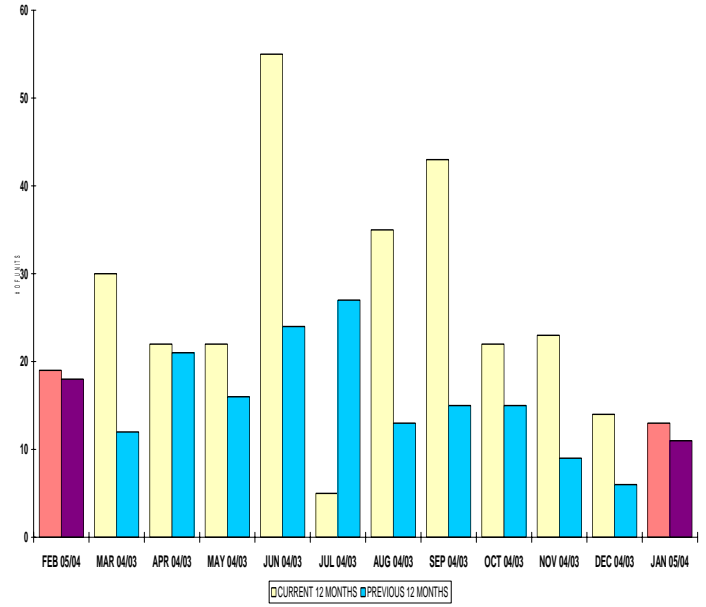
INVENTORY OF ACTIVE LISTINGS
LOTS - SHUSWAP DIVISION



NUMBER OF UNITS SOLD
RESIDENTIAL - SHUSWAP DIVISION



NUMBER OF UNITS SOLD
LOTS - SHUSWAP DIVISION



SHUSWAP ZONE

February 2005

Category	Sales	New Listings	Current Inventory	Sell/Inv. Ratio	Days To Sell
ACREAGE	6	2	59	10.17%	193
ACREAGE/HOUSE	5	20	86	5.81%	63
LOTS	13	15	242	5.37%	290
RESIDENTIAL	28	52	168	14.38%	142
AVERAGE HOUSE PRICE \$188,232			MEDIAN HOUSE PRICE \$177,250		

Lots Include: Acreage Waterfront, Lots and Lots Waterfront