

# SHUSWAP ZONE MONTHLY STATISTICS

## JANUARY 1 - JANUARY 31st, 2007

Zone Totals	Page 2
Quick Summary and Membership	Page 3
Listing Information	Page 4
Sales Information	Page 5
Residential Graphs	Page 6
Average and Median Price/Days to Sell	Page 7
Lot Graphs	Page 8
Residential Average Graphs	Page 9
Condo and Townhouse Average Graphs	Page 10
Inventory and Million Dollar Property Graphs	Page 11

Out of Board Area Statistics are no longer be published

Totals include variables in any given month, due to preceding month's collapsed sales and deleted listings e&oe

	CURRENT MONTH			YEAR TO DATE		
	THIS YEAR	LAST YEAR	INCREASE	THIS YEAR	LAST YEAR	INCREASE
<b>CENTRAL ZONE TOTALS</b>						
Units Listed	826	742	11.3%	826	742	11.3%
Units Sold	348	373	-6.7%	348	373	-6.7%
Sales Dollars	\$123,318,246	\$113,031,292	9.1%	\$123,318,246	\$113,031,292	9.1%
List/Sell Ratio	94.96%	95.35%		95.35%	95.35%	
Days to Sell	120	86	38.4%	120	86	38.4%
Active Listings	2615	2056	27.2%			
<b>NORTH ZONE TOTALS</b>						
Units Listed	250	292	-14.4%	250	292	-14.4%
Units Sold	142	141	0.7%	142	141	0.7%
Sales Dollars	\$40,840,430	\$35,118,741	16.3%	\$40,840,430	\$35,118,741	16.3%
List/Sell Ratio	91.47%	86.38%		90.53%	86.38%	
Days to Sell	152	229	-33.7%	159	229	-30.3%
Active Listings	1304	1025	27.2%			
<b>SHUSWAP ZONE TOTALS</b>						
Units Listed	133	131	1.5%	133	131	1.5%
Units Sold	72	81	-11.1%	72	81	-11.1%
Sales Dollars	\$22,248,360	\$20,131,450	10.5%	\$22,248,360	\$20,131,450	10.5%
List/Sell Ratio	94.39%	92.72%		94.39%	92.72%	
Days to Sell	127	191	-33.6%	131	220	-40.4%
Active Listings	717	660	8.6%			
<b>GRAND TOTALS</b>						
Units Listed	1209	1165	3.8%	1209	1165	3.8%
Units Sold	562	595	-5.5%	562	595	-5.5%
Sales Dollars	\$186,407,036	\$168,281,483	10.8%	\$186,407,036	\$168,281,483	10.8%
List/Sell Ratio	93.61%	91.48%		93.42%	91.48%	
Days to Sell	133	169	-21.3%	112	159	-29.8%
Active Listings	4636	3741	23.9%			

e&amp;oe

# SHUSWAP OKANAGAN ZONE

## QUICK SUMMARY

### January 31st, 2007

	<u>TOTAL SALES VOLUME</u>		<u>RESIDENTIAL SALES</u>		<u>TOTAL LISTINGS</u>		<u>Average No. Listings Per SR</u>
	<u># of Units</u>	<u>\$ Value</u>	<u># of Units</u>	<u>\$ Value</u>	<u>Listings Taken</u>	<u>Inventory</u>	
January-07	72	\$22,248,360	26	\$7,558,400	133	717	6.2
December-06	55	\$11,879,773	20	\$5,247,400	58	738	
January-06	81	\$20,131,450	23	\$5,378,650	131	660	

**Monthly Ratio of Sales versus Inventory All Property Types** **10.04%**

<u>Category</u>	<u>Sales</u>	<u>New Listings</u>	<u>Current Inventory</u>	<u>Sell/Inv. Ratio</u>	<u>Days To Sell</u>
ACREAGE	3	4	57	5.26%	152
ACREAGE/HOUSE	7	11	64	10.94%	137
LOTS	10	22	113	8.85%	155
RESIDENTIAL	26	51	200	13.00%	102

Average House Price	<b>\$290,708</b>	Median House Price	<b>\$275,500</b>
The Average and Median Price are the Monthly Figures			

### MEMBERSHIP INFORMATION

	<u>TOTAL NUMBER OF MEMBERS</u>	<u>TOTAL NUMBER OF MEMBERS</u>	<u>CHANGE BY NUMBER</u>	<u>CHANGE BY %</u>
	<u>January 31/07</u>	<u>January 31/06</u>		
ALL ZONES	1094	1029	65	6.32%
CENTRAL ZONE	679	648	31	4.78%
NORTH ZONE	300	285	15	5.26%
SHUSWAP ZONE	115	96	19	19.79%

**CURRENT**

MANAGING BROKERS	88
SALES REPS	931
PROPERTY MGMNT	16
ASSOCIATE BROKERS	57
EXEMPTION MEMBER	2

**TOTALS** **1094**

SHUSWAP ZONE - COMPARATIVE ACTIVITY - LISTING INFORMATION - JANUARY 2007

	LISTINGS						INVENTORY		
	Jan 2007	Jan 2006	Incr % Decr %	Jan-Jan 2007	Jan-Jan 2006	Incr % Decr %	Jan 2007	Jan 2006	Incr % Decr %
<b>RESIDENTIAL:</b>									
Acreage/House	11	20	-45.0%	11	20	-45.0%	64	53	20.8%
Duplex	1	1	0.0%	1	1	0.0%	4	3	33.3%
Mobile Homes	5	10	-50.0%	5	10	-50.0%	28	39	-28.2%
Recreational	4	2	100.0%	4	2	100.0%	12	10	20.0%
Residential	51	53	-3.8%	51	53	-3.8%	200	141	41.8%
Residential WF	9	4	125.0%	9	4	125.0%	42	22	90.9%
3 & 4 Plex	0	0	0.0%	0	0	0.0%	0	1	-100.0%
Timeshares	0	0	0.0%	0	0	0.0%	1	1	100.0%
Apartments	1	4	-75.0%	1	4	-75.0%	22	56	-60.7%
Townhouses	10	4	150.0%	10	4	150.0%	56	65	-13.8%
<b>Total</b>	<b>92</b>	<b>98</b>		<b>92</b>	<b>98</b>		<b>429</b>	<b>391</b>	
<b>FARMS:</b>	<b>2</b>	<b>4</b>	<b>-50.0%</b>	<b>2</b>	<b>4</b>	<b>-50.0%</b>	<b>19</b>	<b>10</b>	<b>90.0%</b>
<b>MULTI FAMILY:</b>	<b>1</b>	<b>3</b>	<b>-66.7%</b>	<b>1</b>	<b>3</b>	<b>-66.7%</b>	<b>4</b>	<b>10</b>	<b>-60.0%</b>
<b>LOTS:</b>									
Acreage	4	3	33.3%	4	3	33.3%	57	38	50.0%
Acreage WF	1	0	100.0%	1	0	100.0%	11	1	1000.0%
Lots	19	8	137.5%	19	8	137.5%	96	92	4.3%
Lots WF	2	1	100.0%	2	1	100.0%	6	8	-25.0%
<b>Total</b>	<b>26</b>	<b>12</b>		<b>26</b>	<b>12</b>		<b>170</b>	<b>139</b>	
<b>I.C.&amp; I.:</b>									
Business	5	6	-16.7%	5	6	-16.7%	39	43	-9.3%
Commercial	3	5	-40.0%	3	5	-40.0%	21	30	-30.0%
Land	4	1	300.0%	4	1	300.0%	22	23	-4.3%
Leases	0	2	-100.0%	0	2	-100.0%	13	14	-7.1%
<b>Total</b>	<b>12</b>	<b>14</b>		<b>12</b>	<b>14</b>		<b>95</b>	<b>110</b>	
<b>GRAND TOTALS</b>	<b>133</b>	<b>131</b>	<b>1.5%</b>	<b>133</b>	<b>131</b>	<b>1.5%</b>	<b>717</b>	<b>660</b>	<b>8.6%</b>

Totals include variables in any given month, due to preceding month's collapsed sales and deleted listings

e&oe

SHUSWAP ZONE - COMPARATIVE ACTIVITY - SALES INFORMATION - JANUARY 2007

	UNIT SALES						SALES \$ VOLUME			List Sell Ratio	SALES \$ VOLUME			List Sell Ratio		
	JAN	Jan	Incr %	YTD	YTD	Incr %	JAN	JAN	Incr %		JAN	JAN	Incr %		J-JN	J-JN
	2007	2006	Decr %	2007	2006	Decr %	2007	2006	Decr %	2007	2006	Decr %	2007	2006		
<b>RESIDENTIAL:</b>																
Acreage/House	7	9	-22.2%	7	9	-22.2%	\$2,725,000	\$4,363,250	-37.5%	95.69%	91.97%	\$2,725,000	\$4,363,250	-37.5%	95.69%	91.97%
Duplex	1	2	100.0%	1	2	-50.0%	\$177,000	\$203,000	100.0%	95.68%	88.10%	\$177,000	\$203,000	-12.8%	95.68%	88.10%
Mobile Homes	6	7	-14.3%	6	7	-14.3%	\$406,000	\$409,900	-1.0%	86.06%	90.58%	\$406,000	\$409,900	-1.0%	86.06%	90.58%
Recreational	0	1	0.0%	0	1	-100.0%	\$0	\$108,000	0.0%	0.00%	90.07%	\$0	\$108,000	-100.0%	0.00%	90.07%
Residential	26	23	13.0%	26	23	13.0%	\$7,558,400	\$5,378,650	40.5%	96.80%	97.62%	\$7,558,400	\$5,378,650	40.5%	96.80%	97.62%
Residential WF	5	5	0.0%	5	5	0.0%	\$5,616,205	\$2,790,000	101.3%	98.77%	102.56%	\$5,616,205	\$2,790,000	101.3%	98.77%	102.56%
3 & 4 Plex	0	0	0.0%	0	0	100.0%	\$0	\$0	0.0%	0.00%	0.00%	\$0	\$0	100.0%	0.00%	0.00%
Timeshares	0	0	0.0%	0	0	0.0%	\$0	\$0	0.0%	0.00%	0.00%	\$0	\$0	0.0%	0.00%	0.00%
Apartments	5	1	100.0%	5	1	400.0%	\$1,063,900	\$337,500	100.0%	98.19%	97.82%	\$1,063,900	\$337,500	215.2%	98.19%	97.82%
Townhouses	5	7	-28.6%	5	7	-28.6%	\$1,428,000	\$1,888,900	-24.4%	98.60%	100.03%	\$1,428,000	\$1,888,900	-24.4%	98.60%	100.03%
<b>Total</b>	<b>55</b>	<b>55</b>		<b>55</b>	<b>55</b>		<b>\$18,974,505</b>	<b>\$15,479,200</b>				<b>\$18,974,505</b>	<b>\$15,479,200</b>			
<b>FARMS:</b>	<b>0</b>	<b>0</b>	<b>0.0%</b>	<b>0</b>	<b>0</b>	<b>0.0%</b>	<b>\$0</b>	<b>\$0</b>	<b>0.0%</b>	<b>0.00%</b>	<b>0.00%</b>	<b>\$0</b>	<b>\$0</b>	<b>0.0%</b>	<b>0.00%</b>	<b>0.00%</b>
<b>MULTI FAMILY:</b>	<b>0</b>	<b>0</b>	<b>0.0%</b>	<b>0</b>	<b>0</b>	<b>0.0%</b>	<b>\$0</b>	<b>\$0</b>	<b>0.0%</b>	<b>0.00%</b>	<b>0.00%</b>	<b>\$0</b>	<b>\$0</b>	<b>0.0%</b>	<b>0.00%</b>	<b>0.00%</b>
<b>LOTS:</b>																
Acreage	3	5	-40.0%	3	5	-40.0%	\$744,000	\$1,068,000	-30.3%	97.36%	103.73%	\$744,000	\$1,068,000	-30.3%	97.36%	103.73%
Acreage WF	0	1	-100.0%	0	1	-100.0%	\$0	\$105,000	-100.0%	0.00%	80.83%	\$0	\$105,000	-100.0%	0.00%	80.83%
Lots	10	15	-33.3%	10	15	-33.3%	\$788,855	\$1,139,250	-30.8%	97.10%	94.55%	\$788,855	\$1,139,250	-30.8%	97.10%	94.55%
Lots WF	0	0	0.0%	0	0	0.0%	\$0	\$0	0.0%	0.00%	0.00%	\$0	\$0	0.0%	0.00%	0.00%
<b>Total</b>	<b>13</b>	<b>21</b>		<b>13</b>	<b>21</b>		<b>\$1,532,855</b>	<b>\$2,312,250</b>				<b>\$1,532,855</b>	<b>\$2,312,250</b>			
<b>I.C. &amp; I.:</b>																
Business	3	2	0.0%	3	2	50.0%	\$1,040,000	\$955,000	0.0%	77.98%	78.71%	\$1,040,000	\$955,000	8.9%	77.98%	78.71%
Commercial	1	1	0.0%	1	1	0.0%	\$701,000	\$355,000	0.0%	96.03%	84.72%	\$701,000	\$355,000	97.5%	96.03%	84.72%
Land	0	2	0.0%	0	2	-100.0%	\$0	\$1,030,000	0.0%	0.00%	96.73%	\$0	\$1,030,000	-100.0%	0.00%	96.73%
Leases	0	0	100.0%	0	0	100.0%	\$0	\$0	0.0%	0.00%	0.00%	\$0	\$0	0.0%	0.00%	0.00%
<b>Total</b>	<b>4</b>	<b>5</b>		<b>4</b>	<b>5</b>		<b>\$1,741,000</b>	<b>\$2,340,000</b>				<b>\$1,741,000</b>	<b>\$2,340,000</b>			
<b>GRAND TOTALS</b>	<b>72</b>	<b>81</b>	<b>-11.1%</b>	<b>72</b>	<b>81</b>	<b>-11.1%</b>	<b>\$22,248,360</b>	<b>\$20,131,450</b>	<b>10.5%</b>	<b>94.39%</b>	<b>92.72%</b>	<b>\$22,248,360</b>	<b>\$20,131,450</b>	<b>10.52%</b>	<b>94.39%</b>	<b>92.72%</b>

Totals include variables in any given month, due to preceding month's collapsed sales and deleted listings

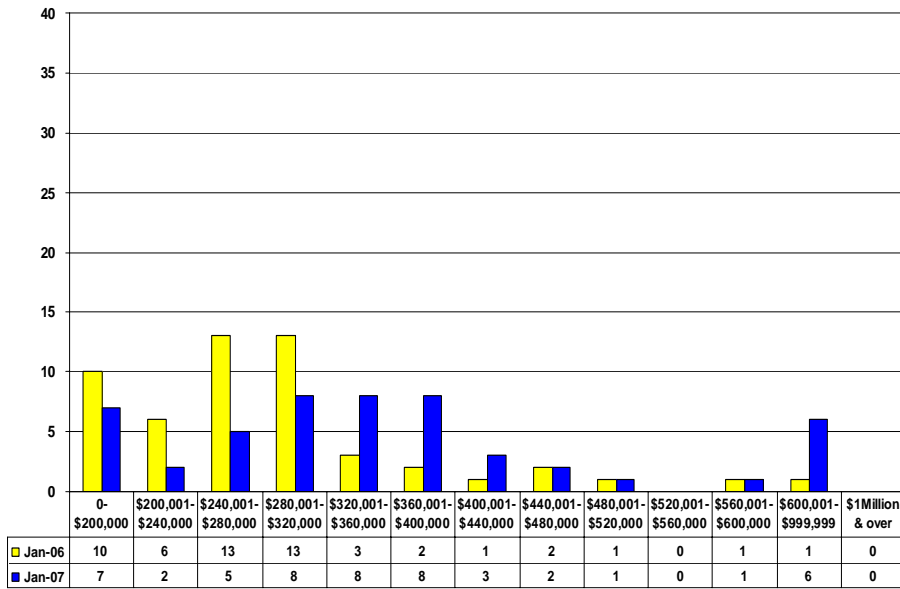
**SHUSWAP ZONE - COMPARATIVE ACTIVITY - AVERAGE, MEDIAN PRICE and DAYS TO SELL - JANUARY 2007**

	AVG SALE PRICE						MEDIAN PRICE						NUMBER DAYS TO SELL					
	JAN 2007	JAN 2006	Incr % Decr %	JAN-JAN 2007	JAN-JAN 2006	Incr % Decr %	JAN 2007	JAN 2006	Incr % Decr %	JAN-JAN 2007	JAN-JAN 2006	Incr % Decr %	JAN 2007	JAN 2006	Incr % Decr %	JN-JN 2007	JN-JN 2006	Incr % Decr %
<b>RESIDENTIAL:</b>																		
Acreage/House	\$389,286	\$484,806	-19.7%	\$389,286	\$484,806	-19.7%	\$342,000	\$316,250	8.1%	\$342,000	\$316,250	8.1%	137	173	-20.9%	137	173	-20.9%
Duplex	\$177,000	\$101,500	74.4%	\$177,000	\$101,500	74.4%	\$177,000	\$101,500	-100.0%	\$177,000	\$101,500	74.4%	68	104	-100.0%	68	104	-34.6%
Mobile Homes	\$67,667	\$58,557	15.6%	\$67,667	\$58,557	15.6%	\$67,667	\$52,000	30.1%	\$67,667	\$52,000	30.1%	91	66	37.1%	91	66	37.1%
Recreational	\$0	\$108,000	-100.0%	\$0	\$108,000	0.0%	\$0	\$108,000	-100.0%	\$0	\$108,000	0.0%	0	164	-100.0%	0	164	-100.0%
Residential	\$290,708	\$233,854	24.3%	\$290,708	\$233,854	24.3%	\$290,708	\$245,000	18.7%	\$290,708	\$245,000	18.7%	102	71	43.4%	102	71	43.4%
Residential WF	\$1,123,241	\$558,000	101.3%	\$1,123,241	\$558,000	101.3%	\$1,123,241	\$385,000	191.8%	\$1,123,241	\$385,000	191.8%	0	289	-100.0%	0	289	-100.0%
3 & 4 Plex	\$0	\$0	0.0%	\$0	\$0	0.0%	\$0	\$0	0.0%	\$0	\$0	0.0%	0	0	0.0%	0	0	100.0%
Timeshares	\$0	\$0	0.0%	\$0	\$0	0.0%	\$0	\$0	0.0%	\$0	\$0	0.0%	0	0	0.0%	0	0	0.0%
Apartments	\$212,780	\$337,500	100.0%	\$212,780	\$337,500	-37.0%	\$212,780	\$334,500	100.0%	\$212,780	\$334,500	-36.4%	175	27	100.0%	175	27	548.9%
Townhouses	\$285,600	\$269,843	5.8%	\$285,600	\$269,843	5.8%	\$285,600	\$230,500	23.9%	\$285,000	\$230,500	23.6%	97	227	-57.4%	97	227	-57.4%
<b>Total</b>																		
<b>FARMS:</b>	\$0	\$0	0.0%	\$0	\$0	0.0%	\$0	\$0	0.0%	\$0	\$0	0.0%	0	0	0.0%	0	0	0.0%
<b>MULTI FAMILY:</b>	\$0	\$0	0.0%	\$0	\$0	0.0%	\$0	\$0	0.0%	\$0	\$0	0.0%	0	0	0.0%	0	0	0.0%
<b>LOTS:</b>																		
Acreage	\$248,000	\$213,600	16.1%	\$248,000	\$213,600	16.1%	\$248,000	\$184,000	34.8%	\$248,000	\$184,000	34.8%	152	398	-61.9%	152	398	-61.9%
Acreage WF	\$0	\$105,000	0.0%	\$0	\$208,250	-100.0%	\$0	\$105,000	0.0%	\$0	\$105,000	-100.0%	0	310	-100.0%	0	310	-100.0%
Lots	\$78,886	\$75,950	3.9%	\$78,886	\$75,950	3.9%	\$78,886	\$86,400	-8.7%	\$78,886	\$86,400	-8.7%	155	202	-23.5%	155	202	-23.5%
Lots WF	\$0	\$0	0.0%	\$0	\$0	0.0%	\$0	\$0	0.0%	\$0	\$0	0.0%	0	0	0.0%	0	0	0.0%
<b>Total</b>																		
<b>I.C. &amp; I.:</b>																		
Business	\$346,667	\$477,500	-27.4%	\$346,667	\$477,500	-27.4%	\$346,667	\$477,500	0.0%	\$346,667	\$477,500	-27.4%	116	230	-49.4%	116	230	-49.4%
Commercial	\$701,000	\$355,000	97.5%	\$701,000	\$355,000	97.5%	\$701,000	\$355,000	0.0%	\$701,000	\$355,000	97.5%	174	14	1142.9%	174	14	1142.9%
Land	\$0	\$515,000	-100.0%	\$0	\$515,000	-100.0%	\$0	\$515,000	-100.0%	\$0	\$515,000	-100.0%	0	392	-100.0%	0	392	-100.0%
Leases	\$0	\$0	0.0%	\$0	\$0	0.0%	\$0	\$0	0.0%	\$0	\$0	0.0%	0	0	0.0%	0	0	0.0%
<b>Total</b>																		
													127	191		127	191	

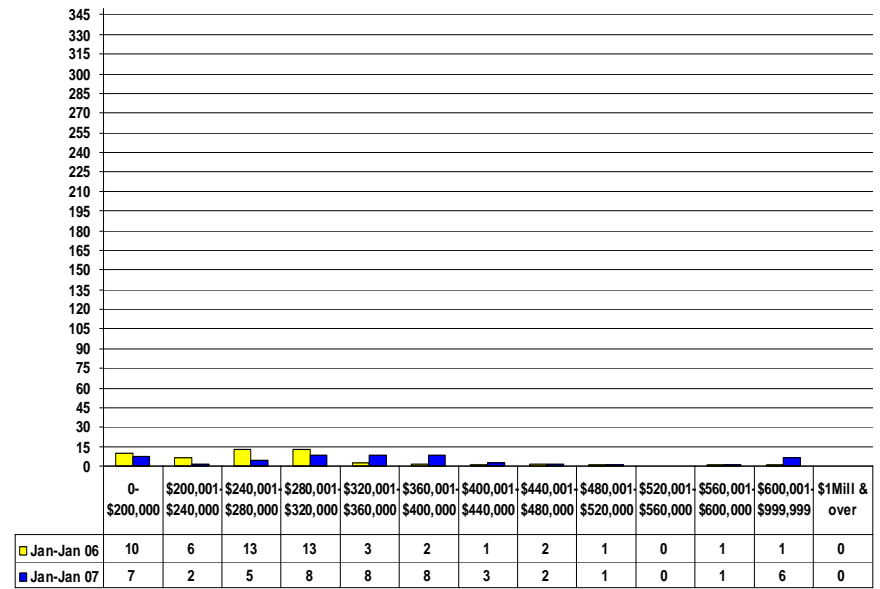
Totals include variables in any given month, due to preceding month's collapsed sales and deleted listings

e&oe

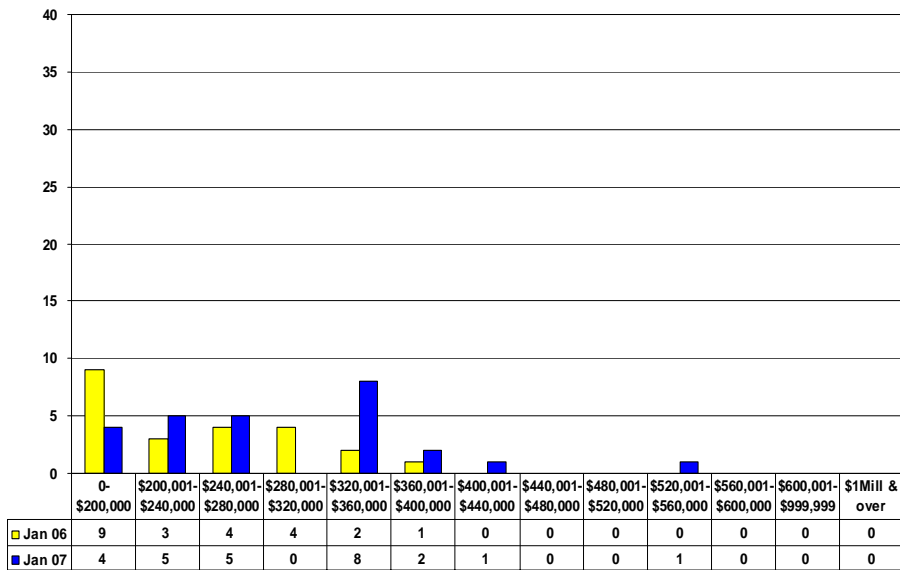
**Shuswap Zone - Single Family Residential January 2007**  
 Monthly Listings By Price Range - Single Family Dwellings Only



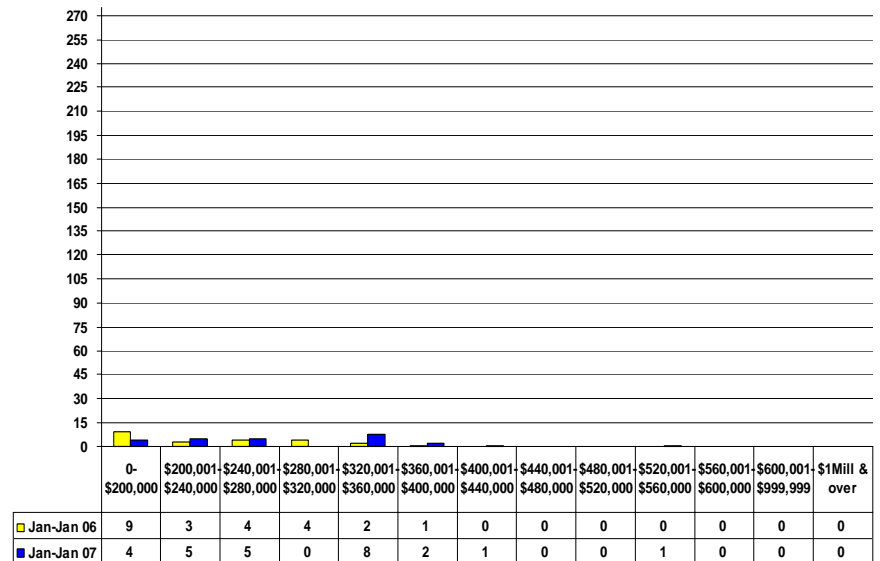
**Shuswap Zone - Single Family Residential 2006 vs 2007**  
 Listings Taken By Price Range - Single Family Dwellings Only



**Shuswap Zone - Single Family Residential - January 2007**  
 Monthly Sales by Price Range - Single Family Dwellings Only

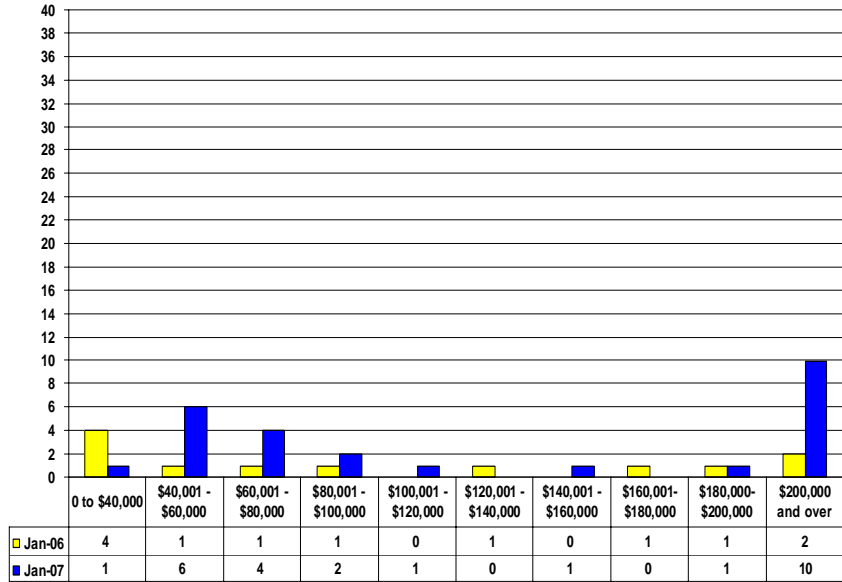


**Shuswap Zone - Single Family Residential 2006 vs 2007**  
 Number of Solds by Price Range - Single Family Dwellings Only

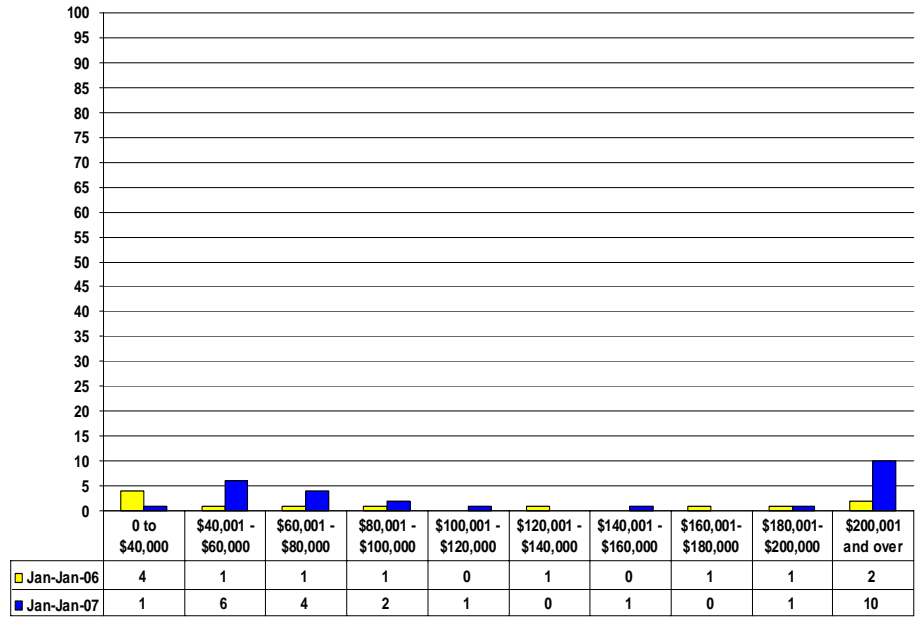




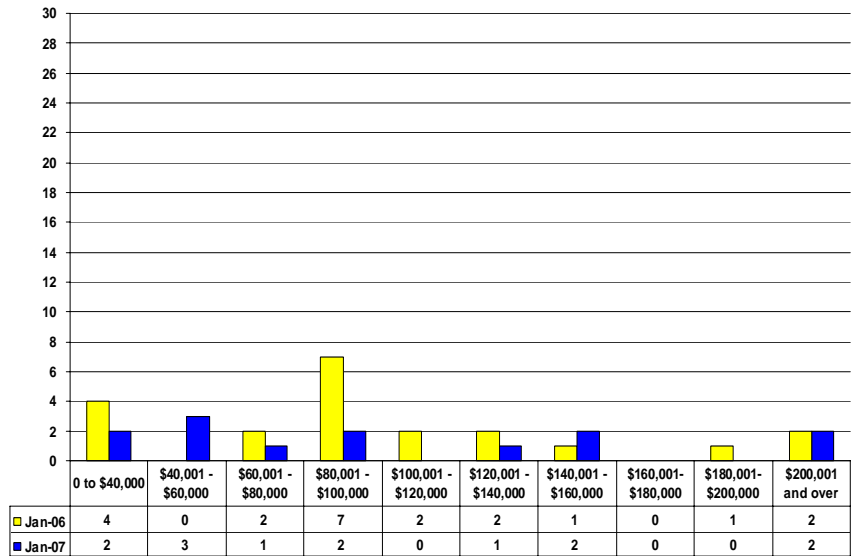
**Shuswap Zone - January 2007**  
 Monthly Listing Comparison By Price Range -  
 Lots, Lots Waterfront, Acreage and Acreage Waterfront



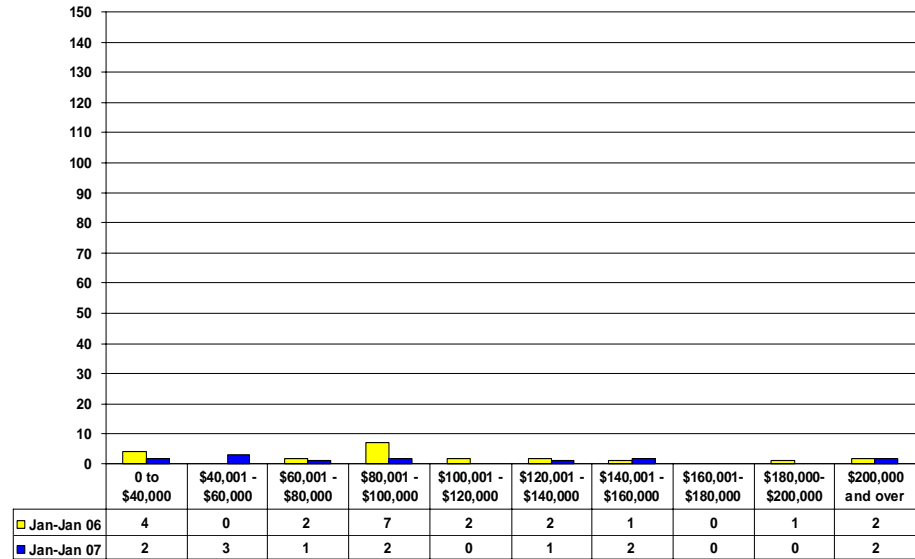
**Shuswap Zone - Lots 2006 vs 2007**  
 Listings Taken By Price Range - Lots, Lots Waterfront, Acreage and Acreage Waterfront

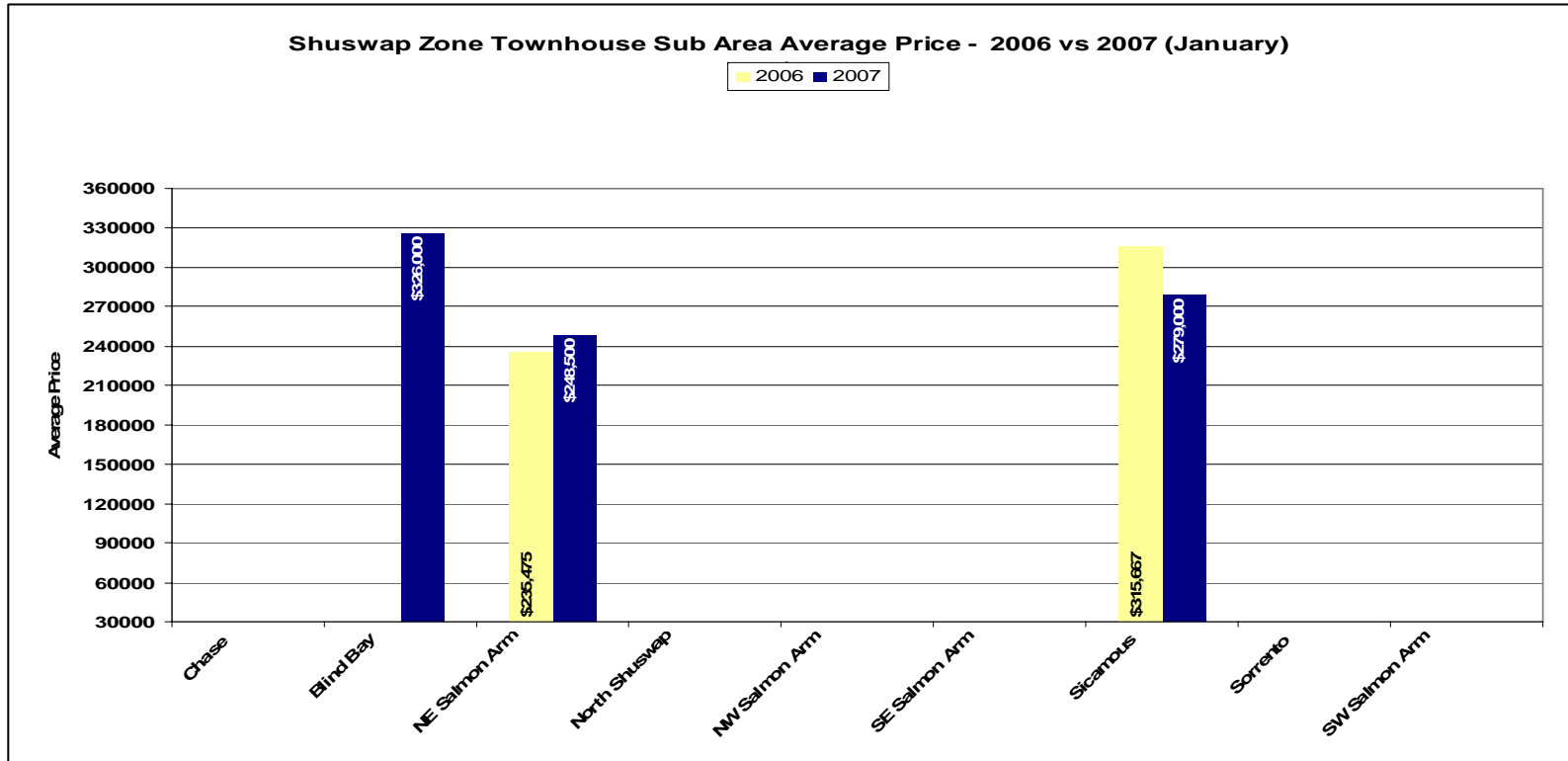
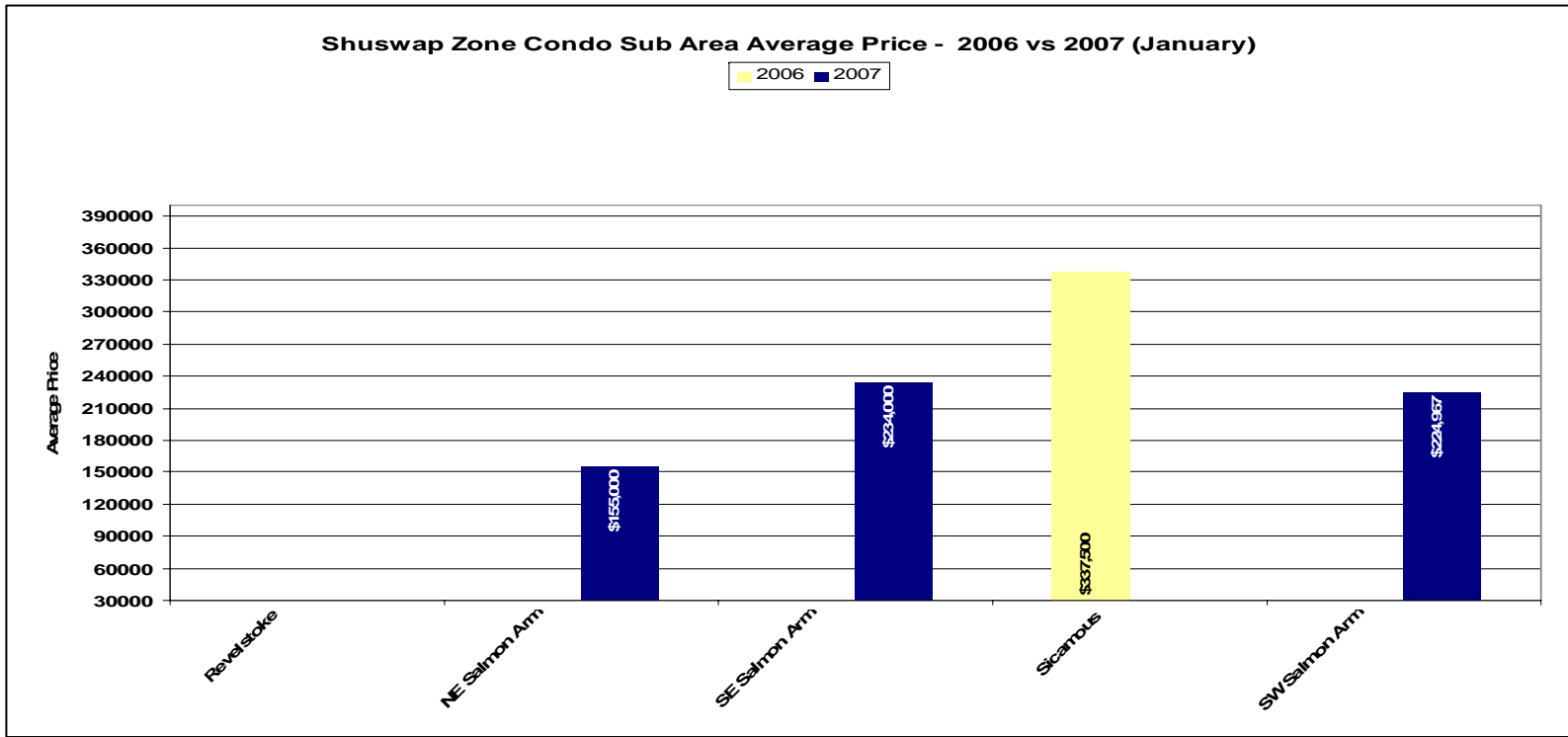


**Shuswap Zone - January 2007**  
 Monthly Sales By Price Range - Lots, Lots Waterfront, Acreage and Acreage Waterfront



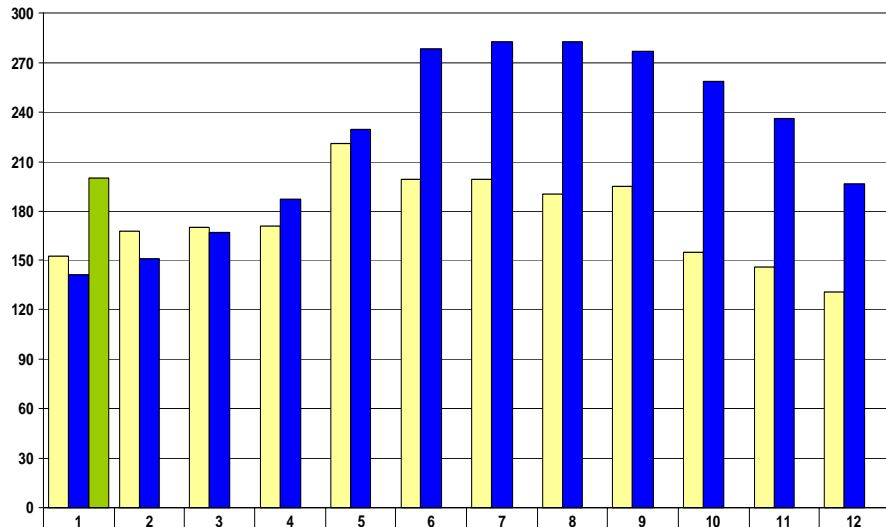
**Shuswap Zone - Lots 2006 vs 2007**  
 Sales By Price Range - Lots, Lots Waterfront, Acreage and Acreage Waterfront





Inventory of Active Listings (3 Year History)  
Single Family Residential - Shuswap Zone

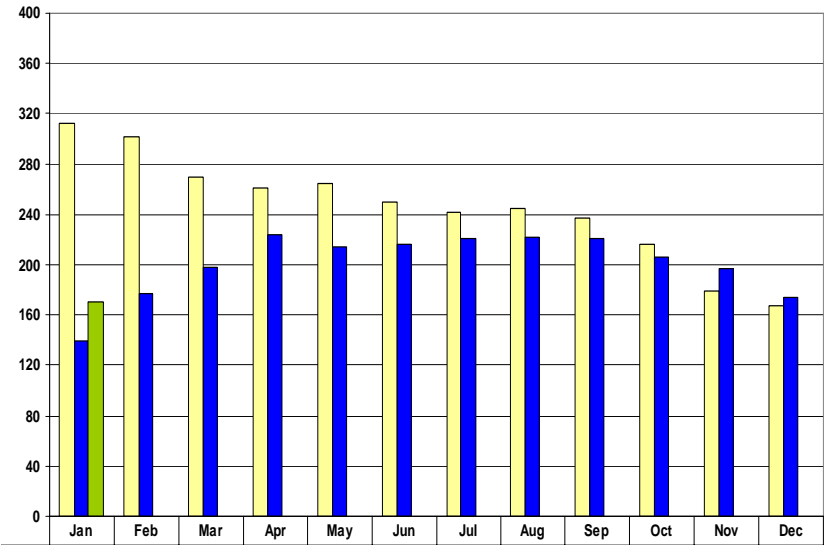
2005 2006 2007



	2005	2006	2007
1	153	141	200
2	168	151	
3	170	167	
4	171	187	
5	221	229	
6	199	278	
7	199	283	
8	190	283	
9	195	277	
10	155	259	
11	146	236	
12	131	196	

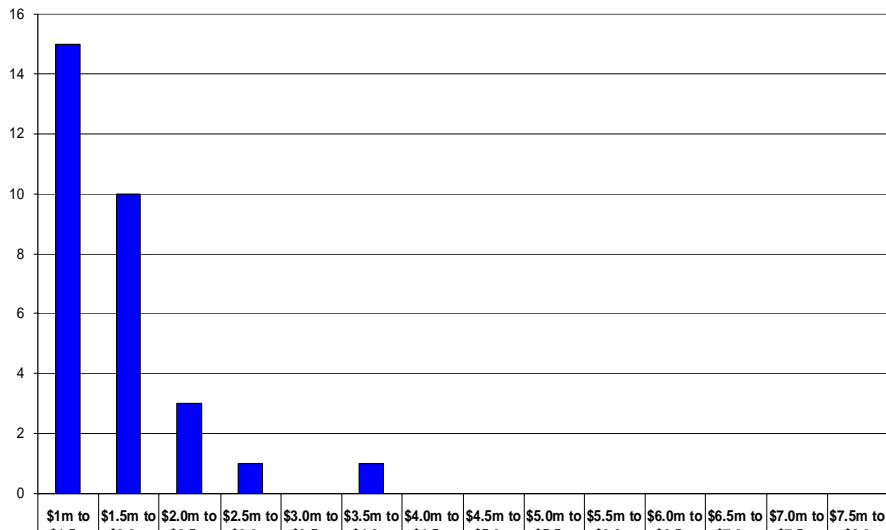
Inventory of Active Listings (3 Year History)  
Lots - Shuswap Zone

2005 2006 2007



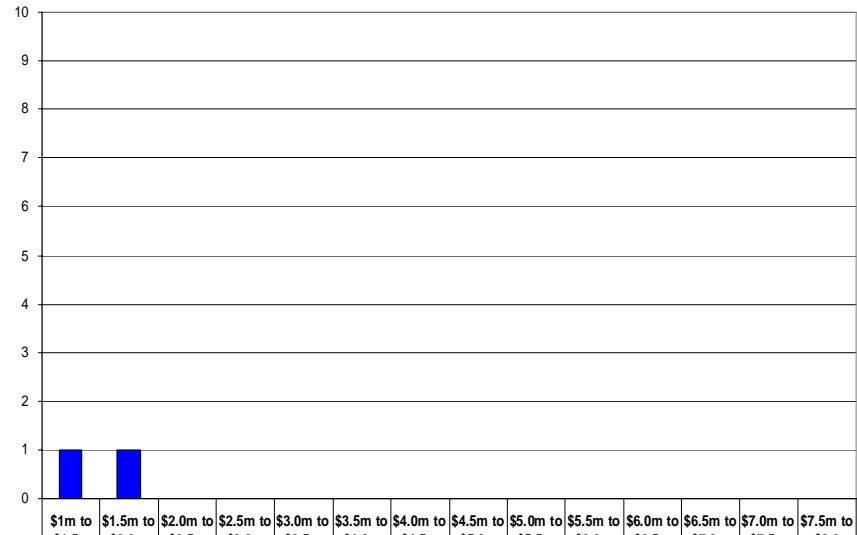
	2005	2006	2007
Jan	312	139	170
Feb	301	177	
Mar	270	198	
Apr	261	224	
May	265	214	
Jun	250	216	
Jul	242	221	
Aug	245	222	
Sep	237	221	
Oct	216	206	
Nov	179	197	
Dec	167	174	

Shuswap Zone - Million Dollar Active Residential Properties  
(Includes Residential Single Family, Single Family With Acreage  
Single Family Bare Land Strata and Residential With Carriage House)



Price Range	Actives
\$1m to \$1.5m	15
\$1.5m to \$2.0m	10
\$2.0m to \$2.5m	3
\$2.5m to \$3.0m	1
\$3.0m to \$3.5m	0
\$3.5m to \$4.0m	1
\$4.0m to \$4.5m	0
\$4.5m to \$5.0m	0
\$5.0m to \$5.5m	0
\$5.5m to \$6.0m	0
\$6.0m to \$6.5m	0
\$6.5m to \$7.0m	0
\$7.0m to \$7.5m	0
\$7.5m to \$8.0m	0

Shuswap Zone - Million Dollar Residential Sales  
(Includes Residential Single Family, Single Family With Acreage  
Single Family Bare Land Strata and Residential With Carriage House)



Price Range	Actives
\$1m to \$1.5m	1
\$1.5m to \$2.0m	1
\$2.0m to \$2.5m	0
\$2.5m to \$3.0m	0
\$3.0m to \$3.5m	0
\$3.5m to \$4.0m	0
\$4.0m to \$4.5m	0
\$4.5m to \$5.0m	0
\$5.0m to \$5.5m	0
\$5.5m to \$6.0m	0
\$6.0m to \$6.5m	0
\$6.5m to \$7.0m	0
\$7.0m to \$7.5m	0
\$7.5m to \$8.0m	0