

# SHUSWAP ZONE

## STAT - O - GRAM

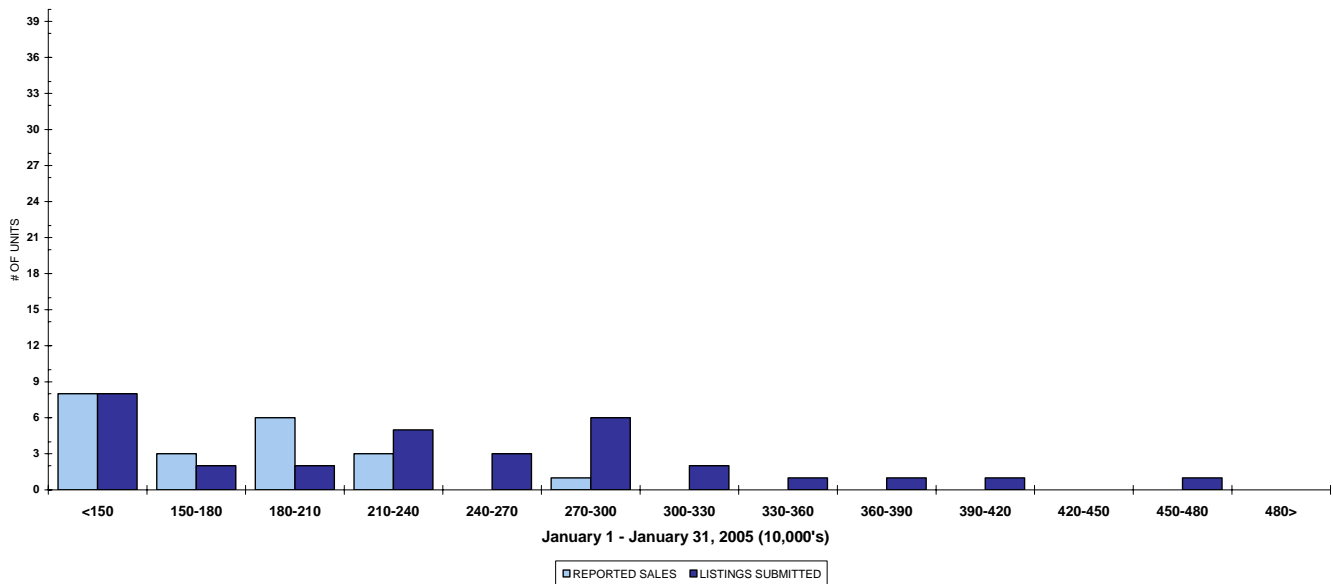
January 2005

### QUICK SUMMARY

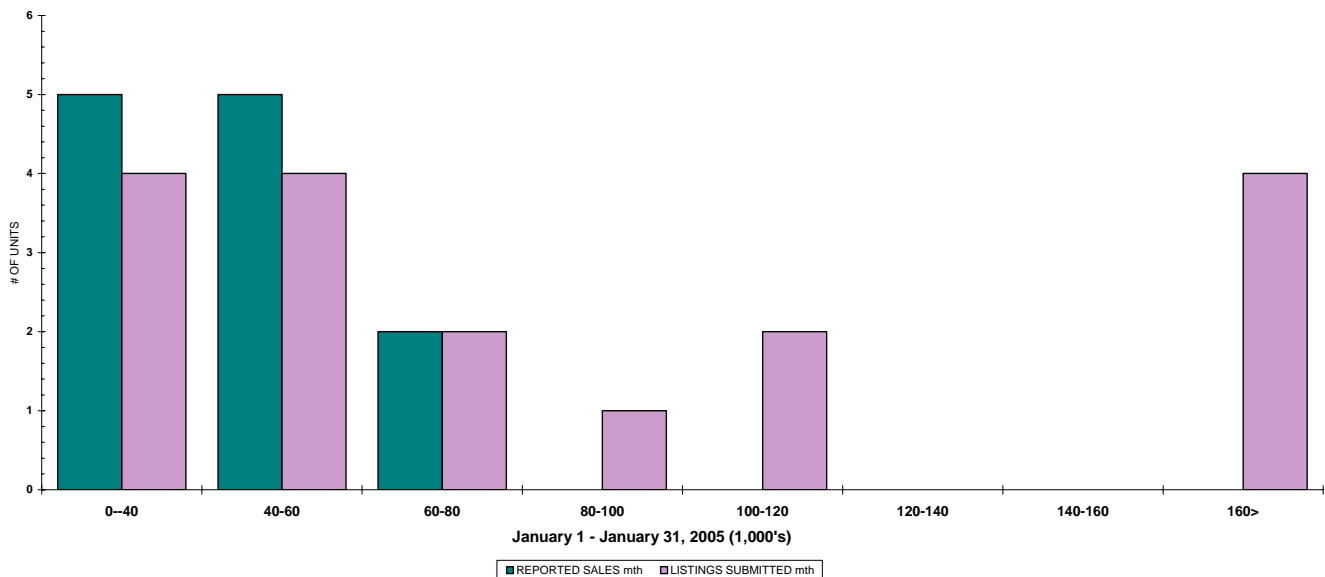
	TOTAL SALES VOLUME		RESIDENTIAL SALES		TOTAL LISTINGS	
	<u># of Units</u>	<u>\$ Value</u>	<u># of Units</u>	<u>\$ Value</u>	<u>Listings Taken</u>	<u>Inventory</u>
January 2005	56	\$8,093,926	22	\$3,476,400	104	834
December 2004	59	\$9,7226,200	20	\$3,562,100	83	821
January 2004	61	\$8,431,050	25	\$3,389,400	167	1,026

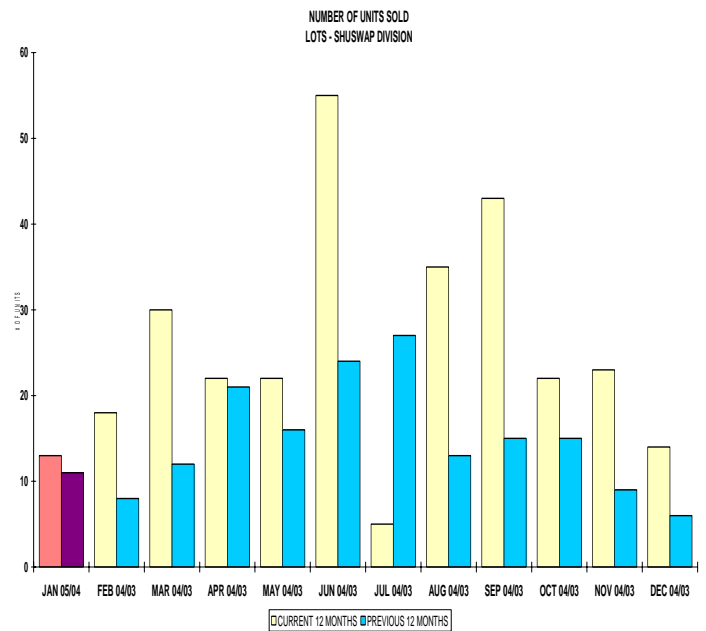
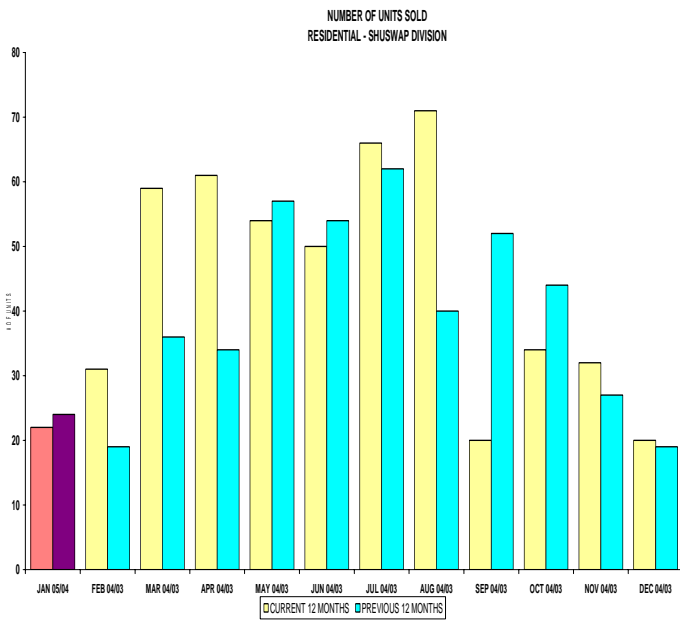
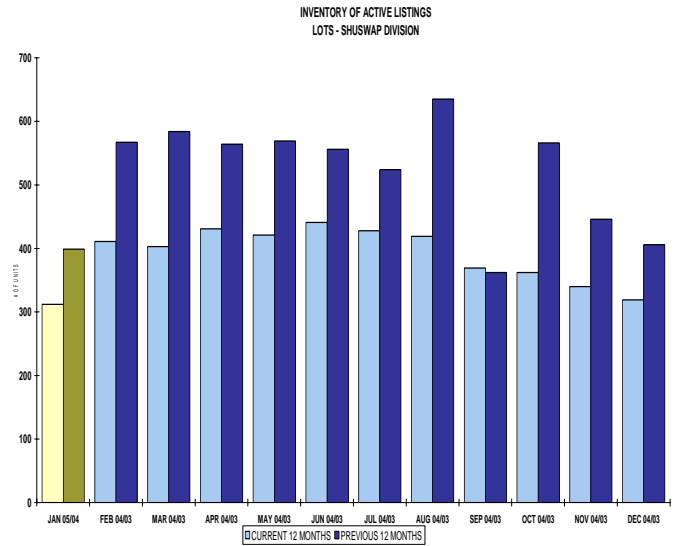
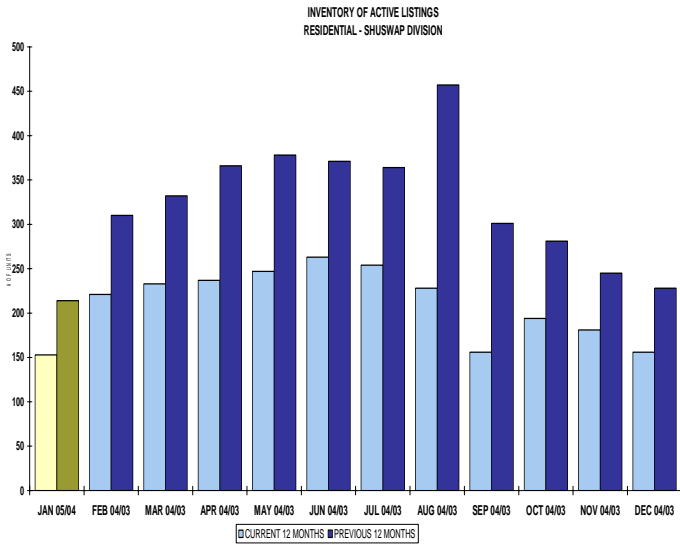
The Shuswap Zone has **88** Members. The average of listings-per-licensee is 9.6

RESIDENTIAL LISTING & SALES ACTIVITY  
SHUSWAP DIVISION (BY PRICE CATEGORY)



LOT LISTING & SALES ACTIVITY  
SHUSWAP DIVISION (BY PRICE CATEGORY)





**SHUSWAP ZONE**

**January 2005**

Category	Sales	New Listings	Current Inventory	Sell/Inv. Ratio	Days To Sell
ACREAGE	3	3	64	4.69%	139
ACREAGE/HOUSE	3	12	75	4.00%	109
LOTS	10	14	248	4.03%	204
RESIDENTIAL	22	38	153	14.38%	106
<b>AVERAGE HOUSE PRICE \$158,018</b>			<b>MEDIAN HOUSE PRICE \$165,000</b>		

Lots Include: Acreage Waterfront, Lots and Lots Waterfront