

# SHUSWAP DIVISION

## STAT - O - GRAM

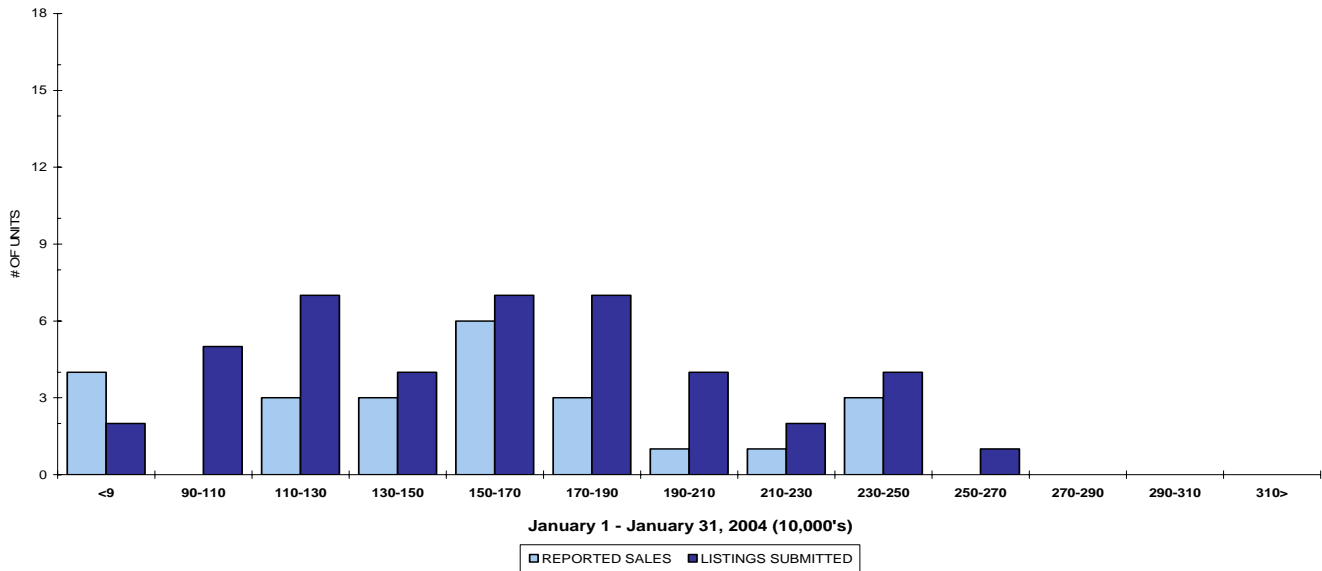
January 2004

### QUICK SUMMARY

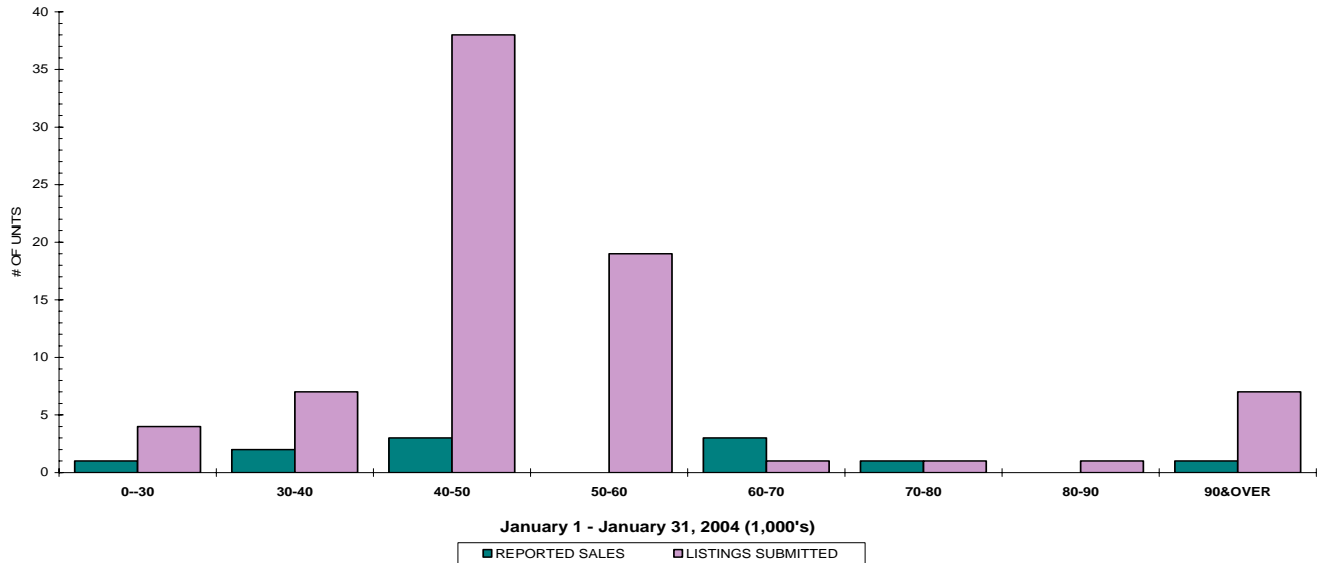
	TOTAL SALES VOLUME		RESIDENTIAL SALES		TOTAL LISTINGS	
	<u># of Units</u>	<u>\$ Value</u>	<u># of Units</u>	<u>\$ Value</u>	<u>Listings Taken</u>	<u>Inventory</u>
January 2004	59	\$8,779,900	24	\$3,764,250	168	1,026
December 2003	54	\$8,160,890	19	\$2,363,240	66	1,044
January 2003	42	\$5,894,691	19	\$2,772,500	141	1,314

The average of listings-per-licensee is 15

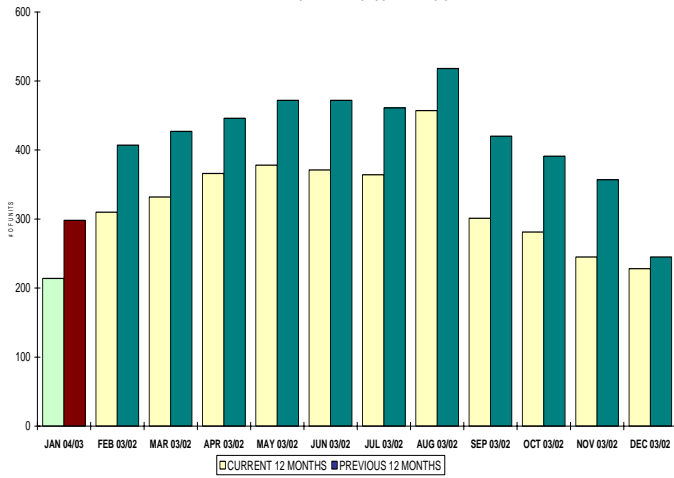
RESIDENTIAL LISTING & SALES ACTIVITY  
SHUSWAP DIVISION (BY PRICE CATEGORY)



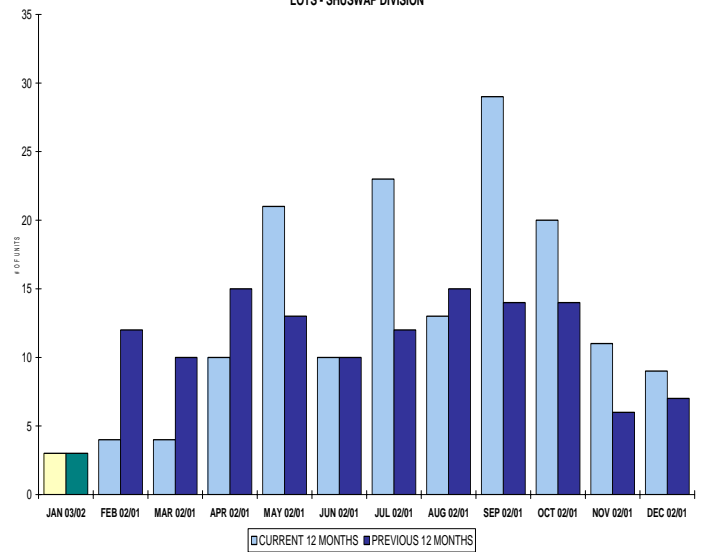
LOT LISTING & SALES ACTIVITY  
SHUSWAP DIVISION (BY PRICE CATEGORY)



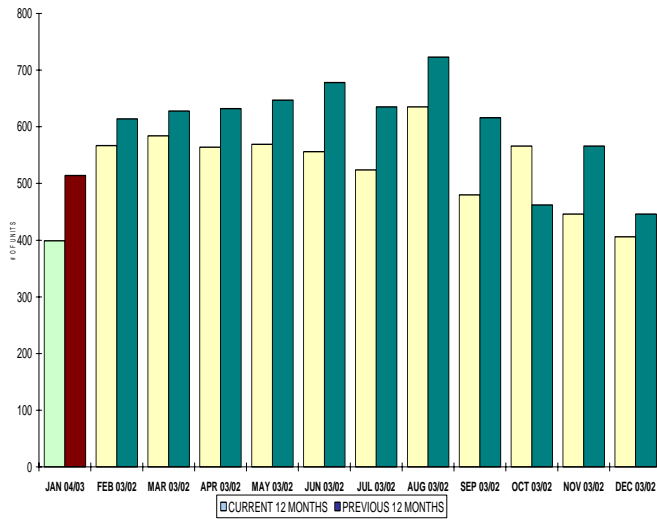
INVENTORY OF ACTIVE LISTINGS  
RESIDENTIAL - SHUSWAP DIVISION



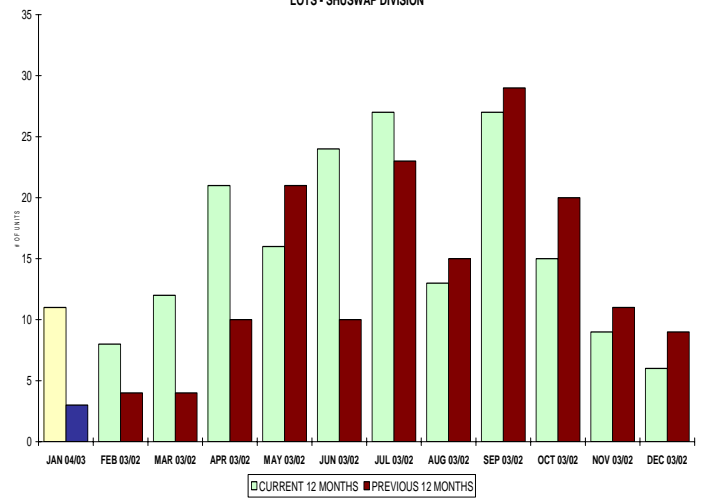
NUMBER OF UNITS SOLD  
LOTS - SHUSWAP DIVISION



INVENTORY OF ACTIVE LISTINGS  
LOTS - SHUSWAP DIVISION



NUMBER OF UNITS SOLD  
LOTS - SHUSWAP DIVISION



**SHUSWAP DIVISION**

**January 2004**

Category	Sales	New Listings	Current Inventory	Sell/Inv. Ratio	Days To Sell
ACREAGE	0	7	90	0.00%	0
ACREAGE/HOUSE	3	12	102	2.94%	100
LOTS	11	71	309	3.56%	930
RESIDENTIAL	24	43	214	11.21%	147
<b>AVERAGE HOUSE PRICE \$156,844</b>			<b>MEDIAN HOUSE PRICE \$157,500</b>		

Lots Include: Acreage Waterfront, Lots and Lots Waterfront