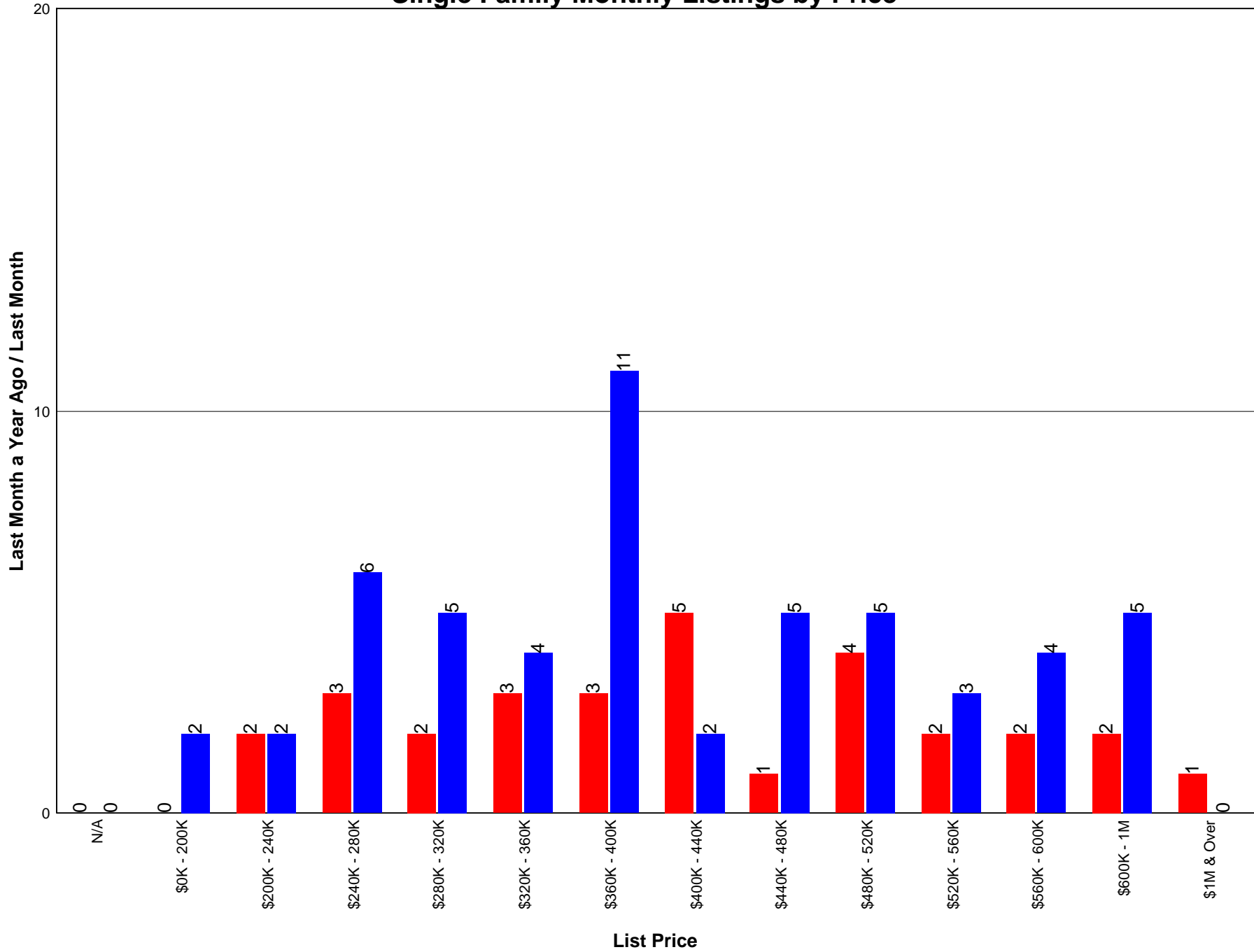


Shuswap Monthly Statistics
Graphs
January 2010

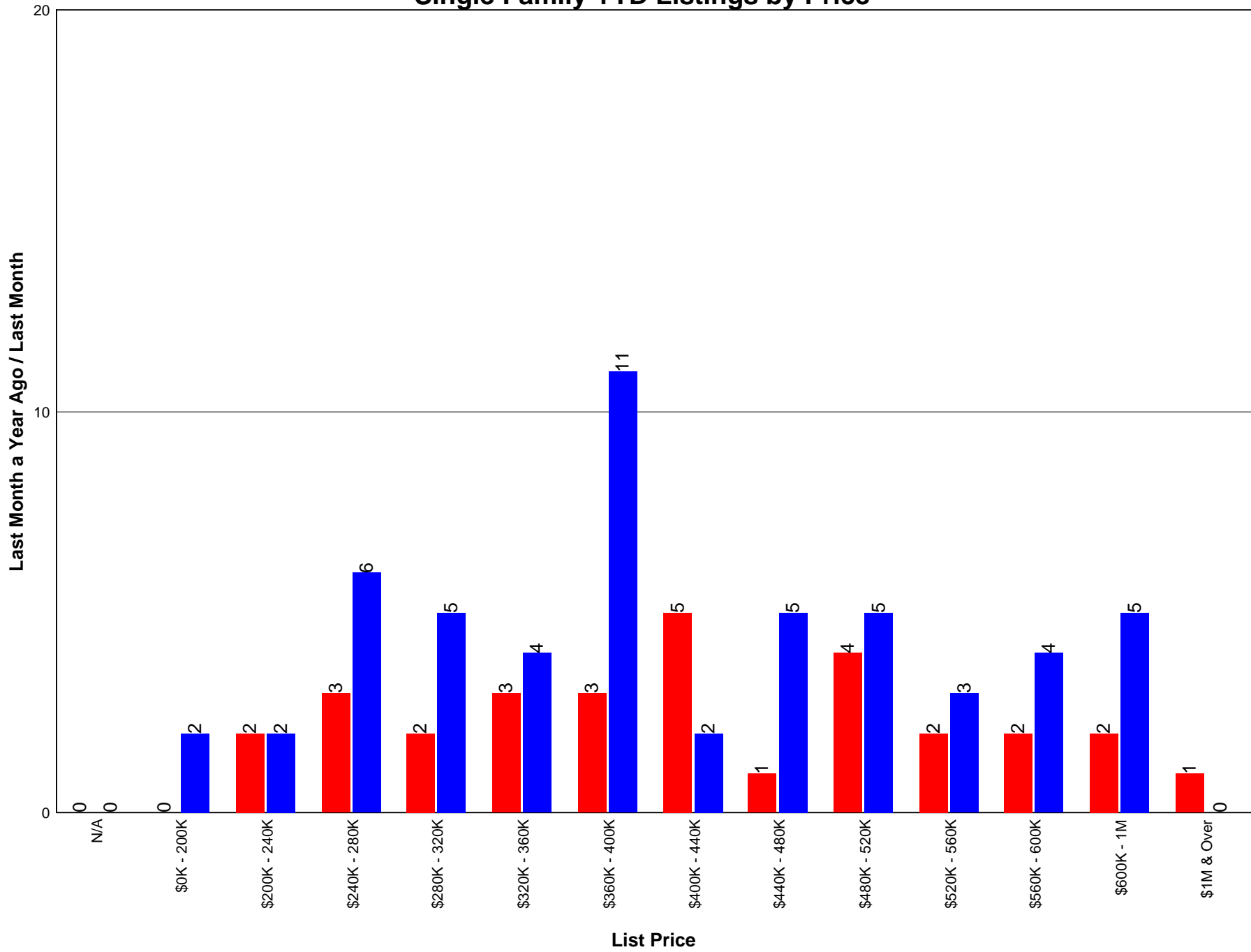
Table of Contents

Table of Contents	2
Single Family Monthly Listings by Price	3
Single Family YTD Listings by Price	4
Single Family Monthly Sales by Price	5
Single Family YTD Sales by Price	6
SF Sub Area Avg Prices YTD	7
Single Family Residential Average Prices	8
Lots/Acreage Monthly Listings by Price	9
Lots/Acreage YTD Listings by Price	10
Lots/Acreage Monthly Sales by Price	11
Lots/Acreage YTD Sales by Price	12
Condo Sub Area Average Prices YTD	13
Townhouse Sub Area Average Prices YTD	14
3-Year Inventory of Active Single Family Residential Listings	15
3-Year Inventory of Active Lots	16
Million-Dollar Active Residential Listings	17
Million-Dollar Residential Sales (Last 2 Months)	18

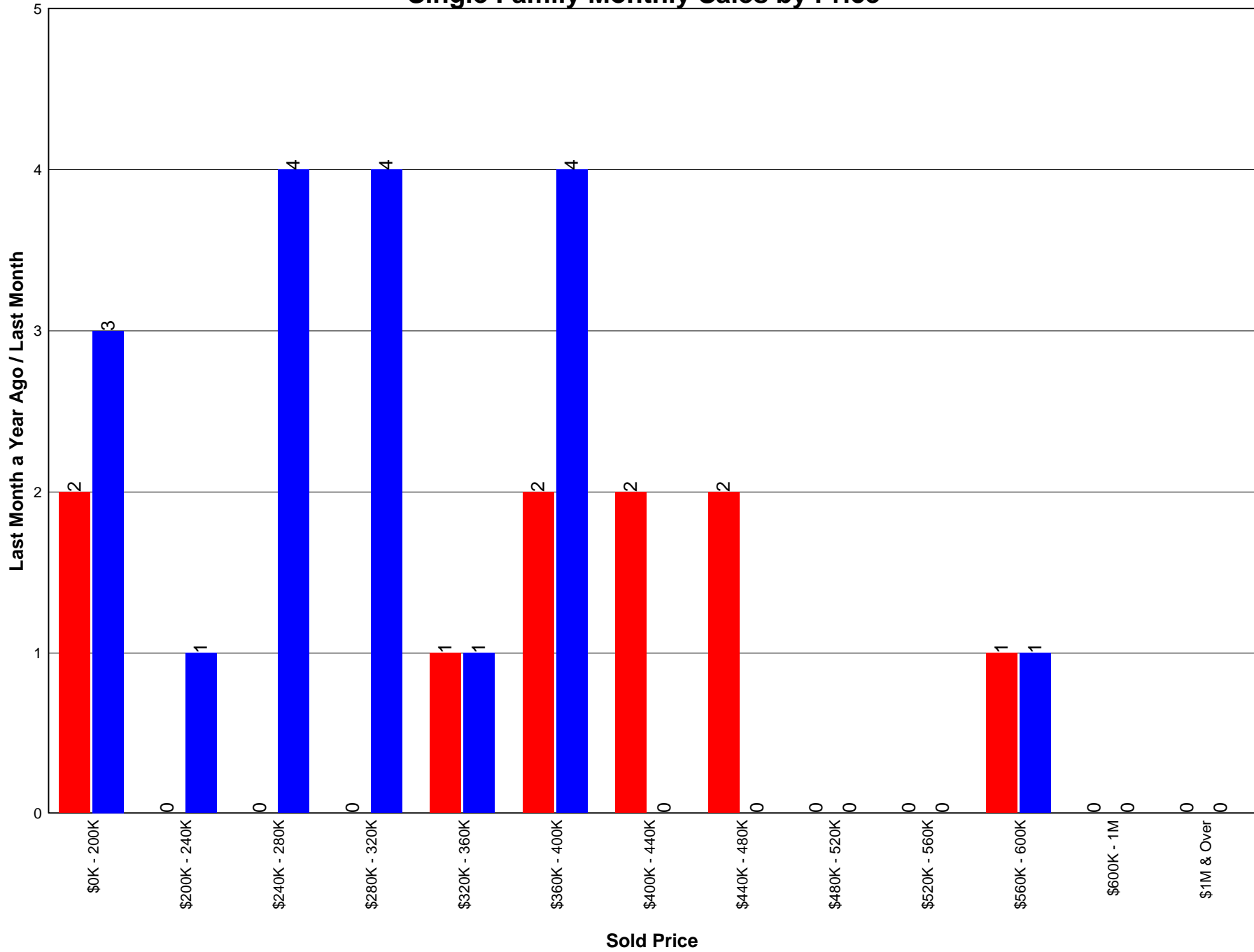
Single Family Monthly Listings by Price



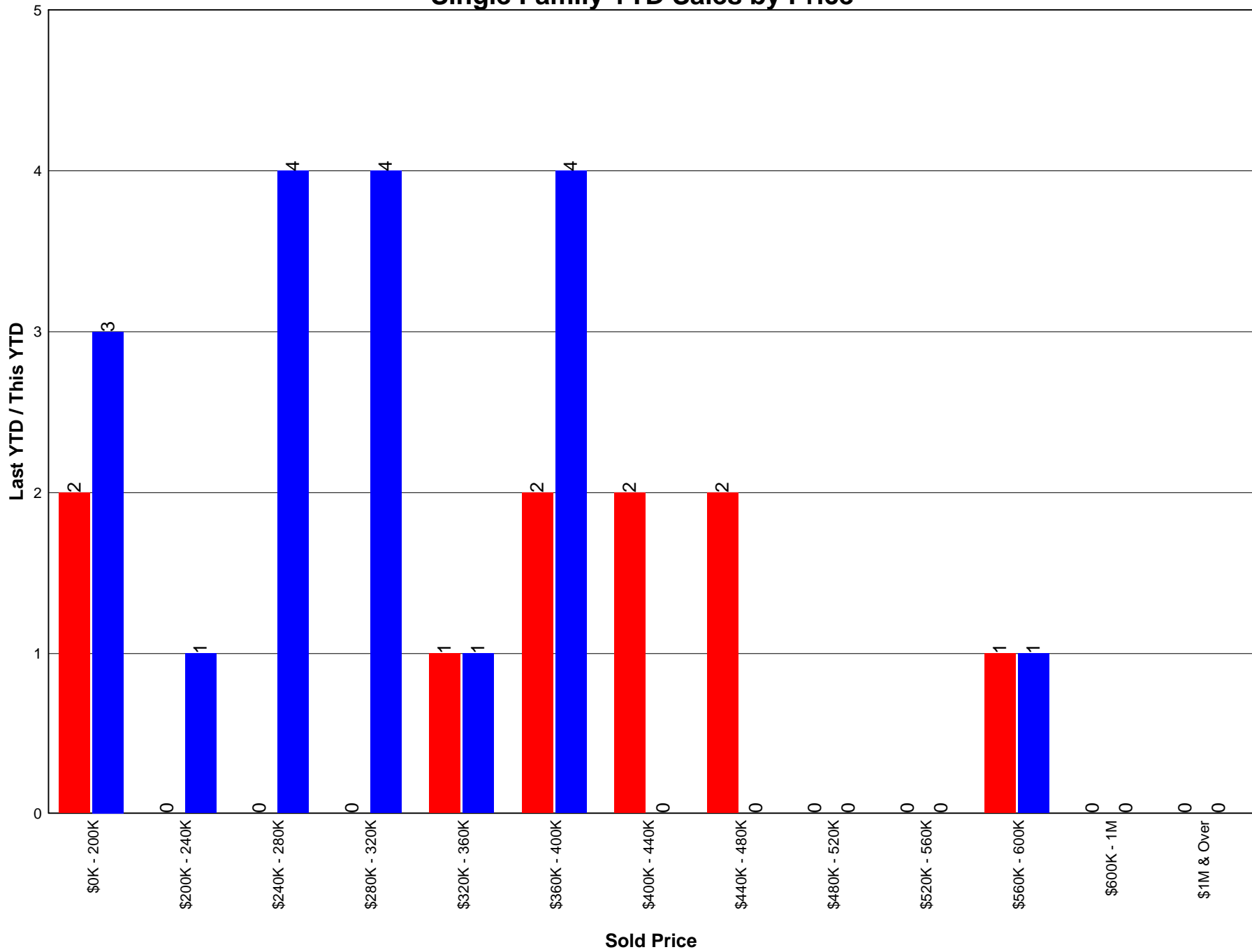
Single Family YTD Listings by Price



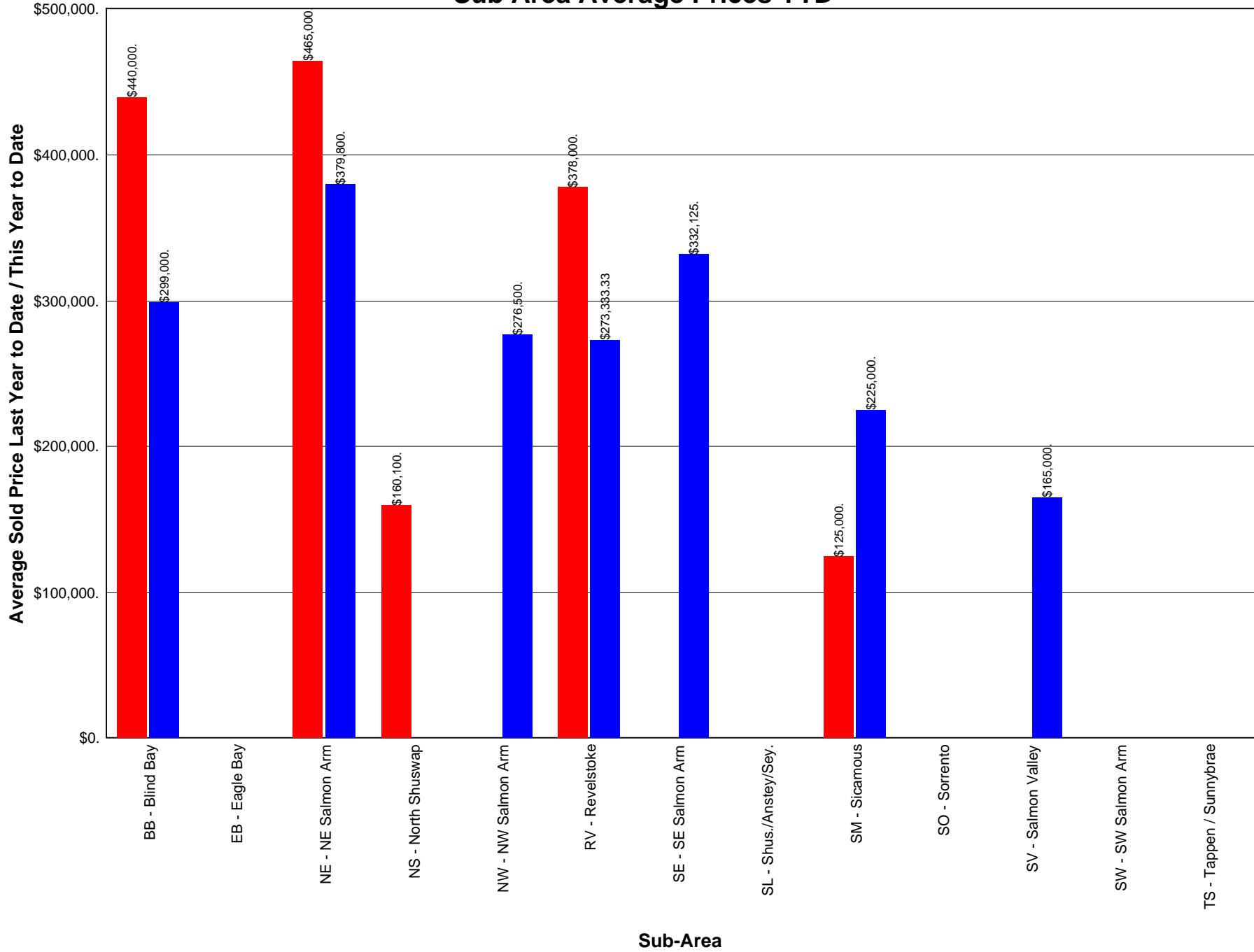
Single Family Monthly Sales by Price



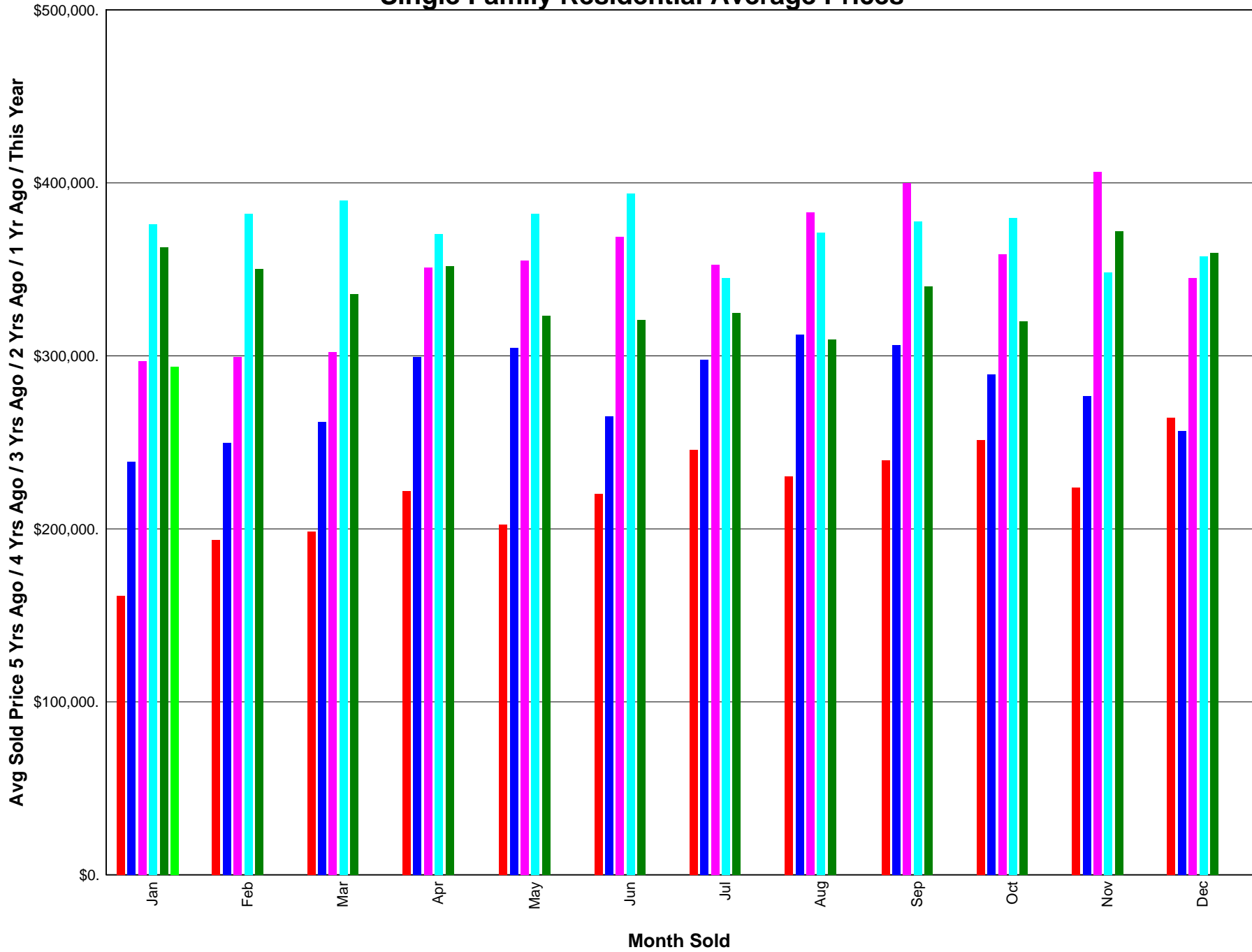
Single Family YTD Sales by Price



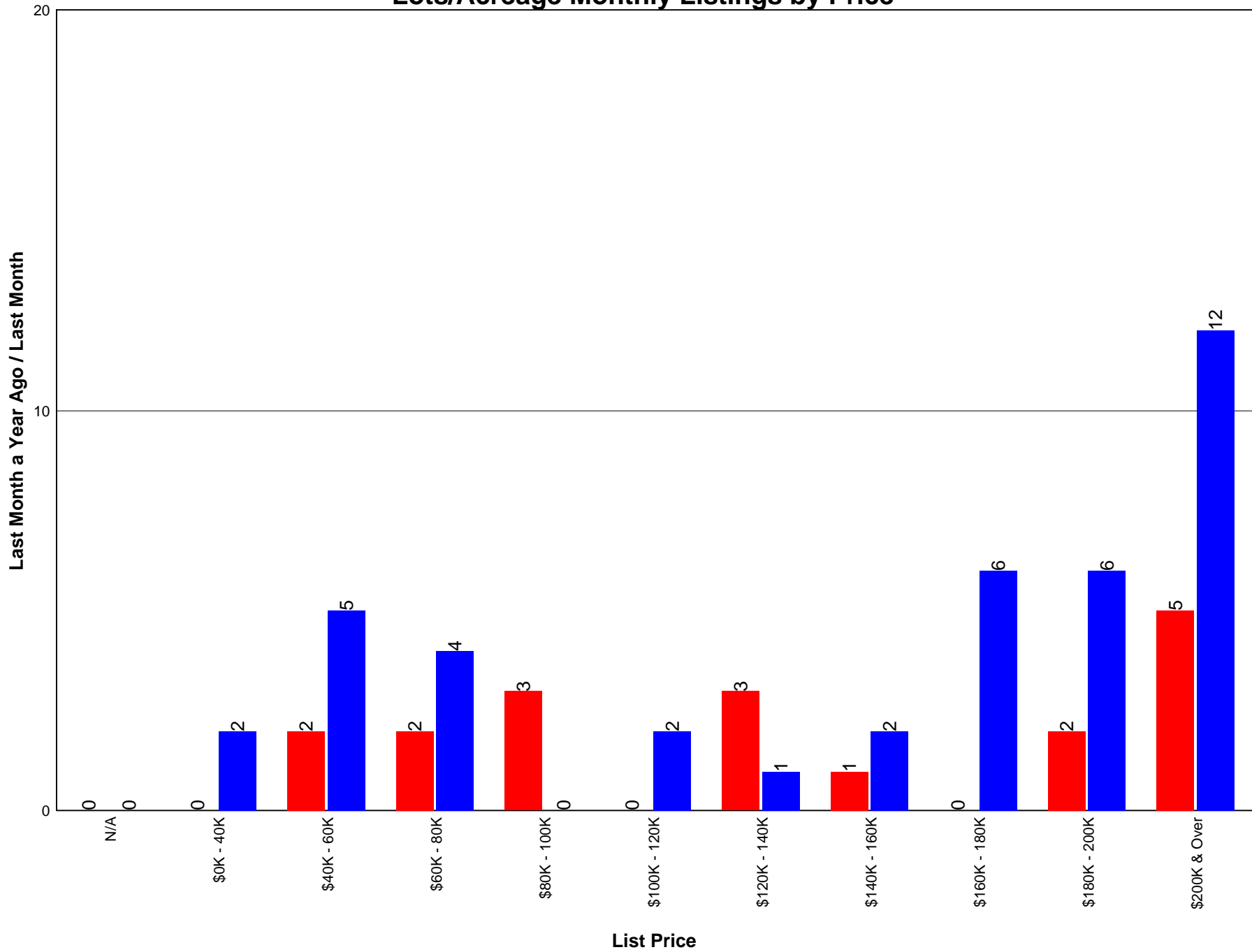
Sub Area Average Prices YTD



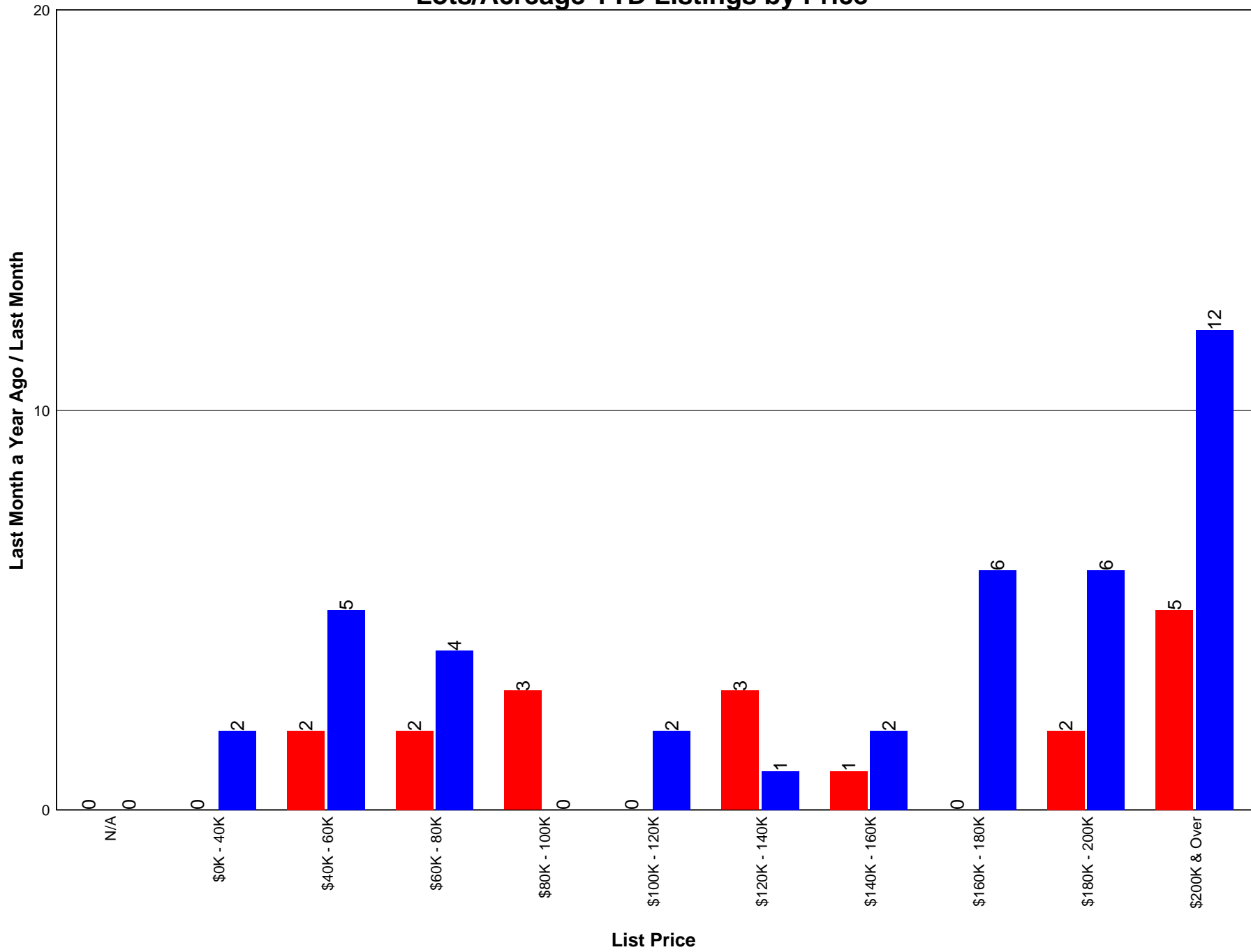
Single Family Residential Average Prices



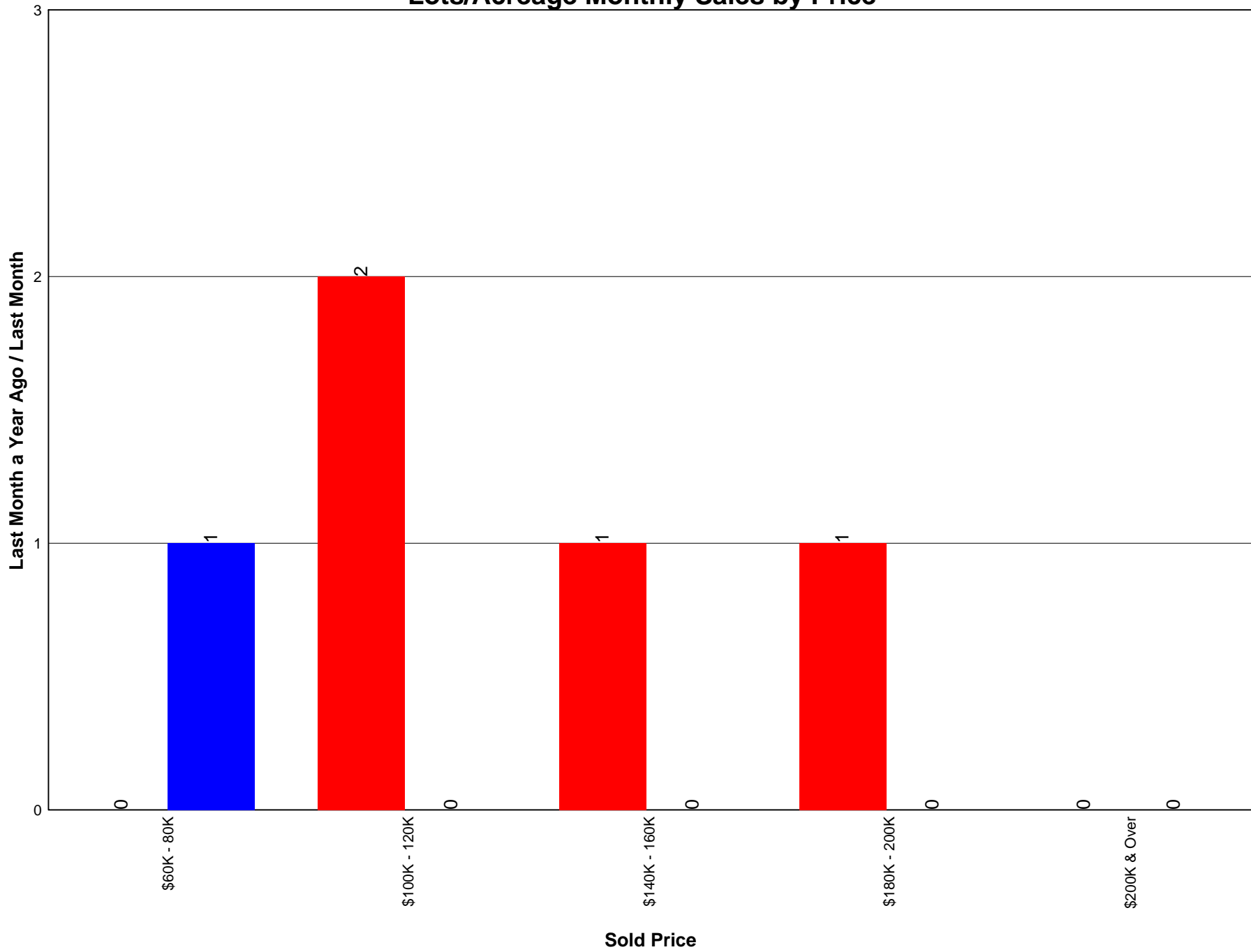
Lots/Acreage Monthly Listings by Price



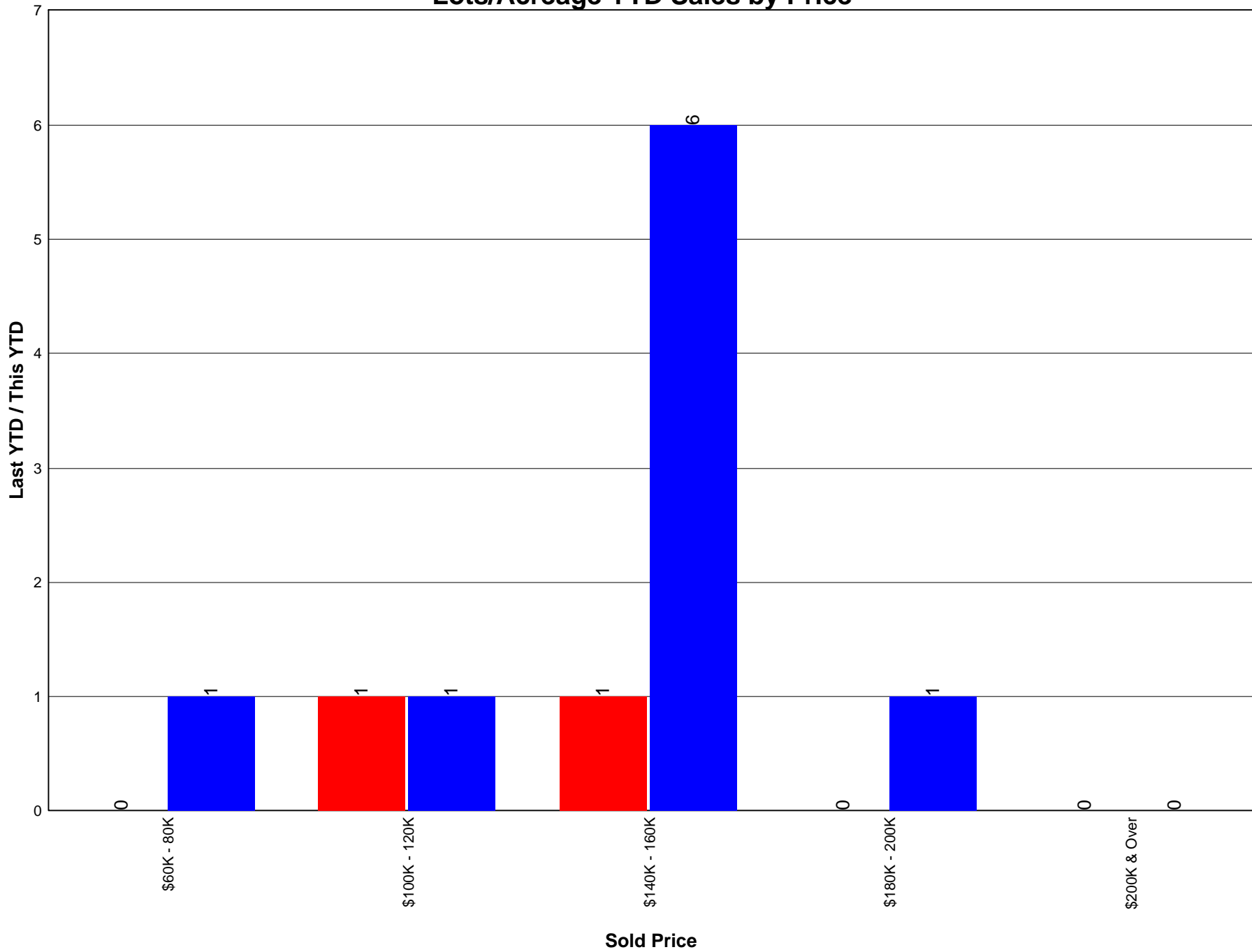
Lots/Acreage YTD Listings by Price



Lots/Acreage Monthly Sales by Price

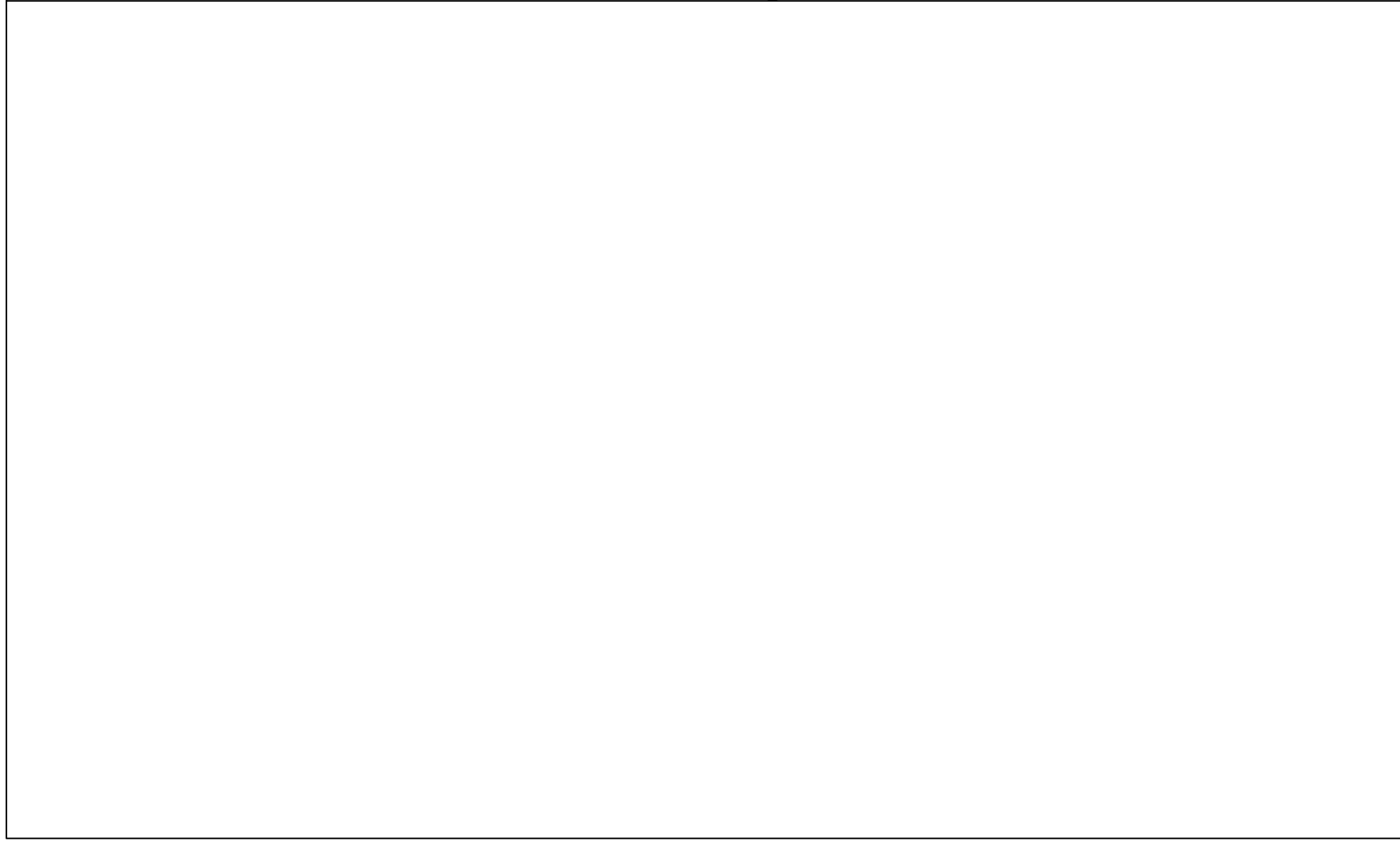


Lots/Acreage YTD Sales by Price



Condo Sub Area Average Prices YTD

Avg Sold Price Last Year to Date / This Year to Date



BB - Blind Bay

EB - Eagle Bay

NE - NE Salmon Arm

NS - North Shuswap

NW - NW Salmon Arm

RV - Revelstoke

SE - SE Salmon Arm

SL - Shus./Anstey/Sey.

SM - Sicamous

SO - Sorrento

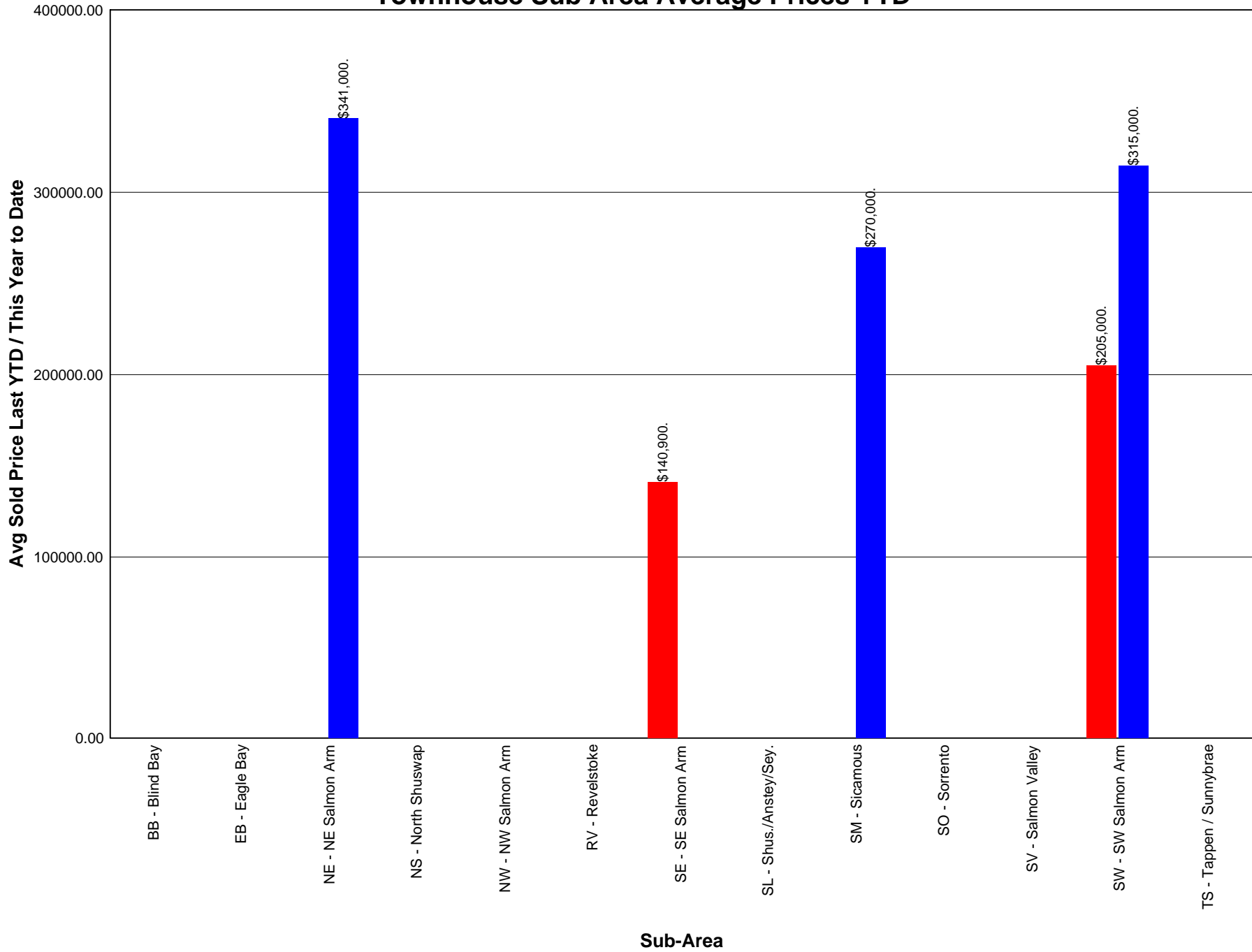
SV - Salmon Valley

SW - SW Salmon Arm

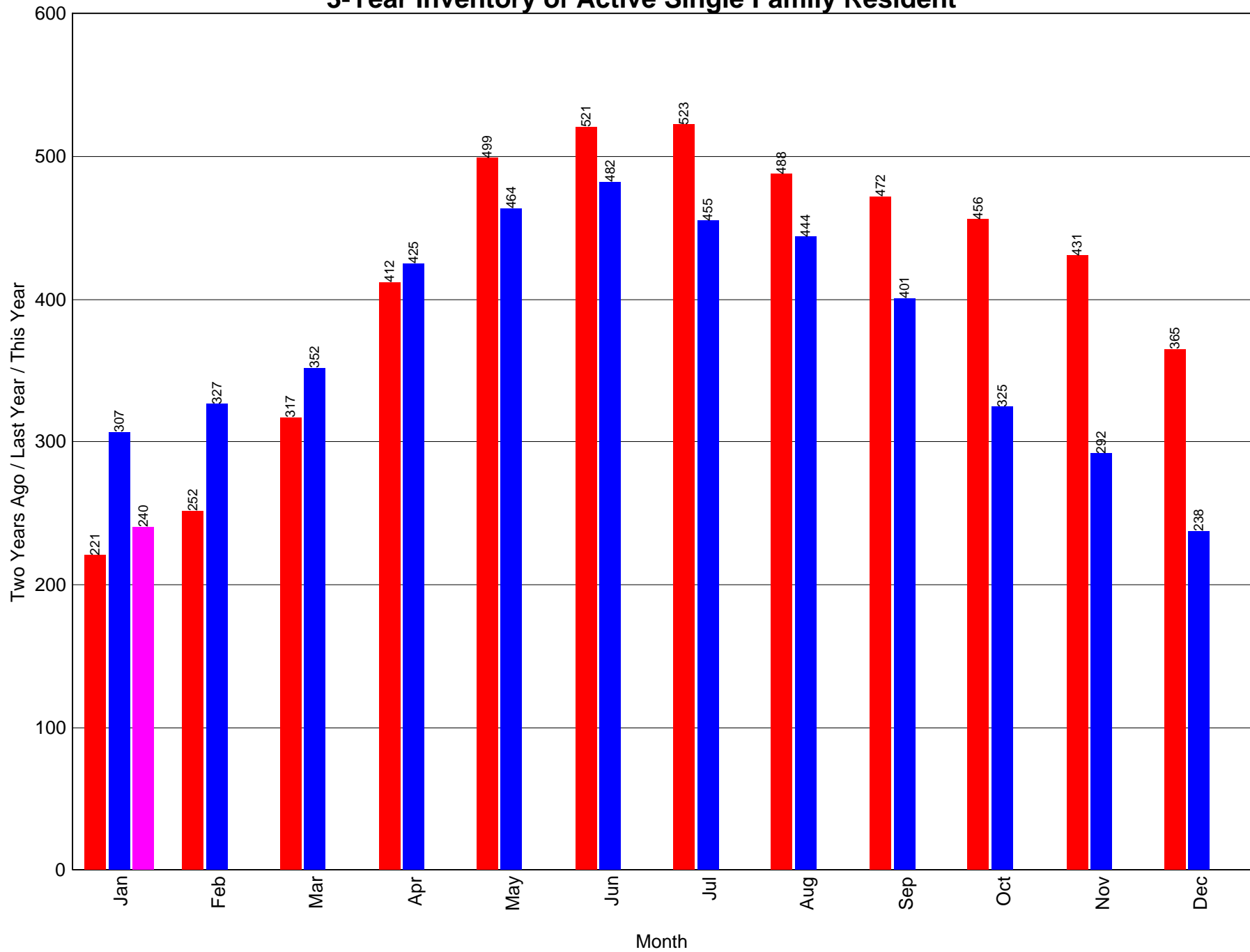
TS - Tappen / Sunnybrae

Sub-Area

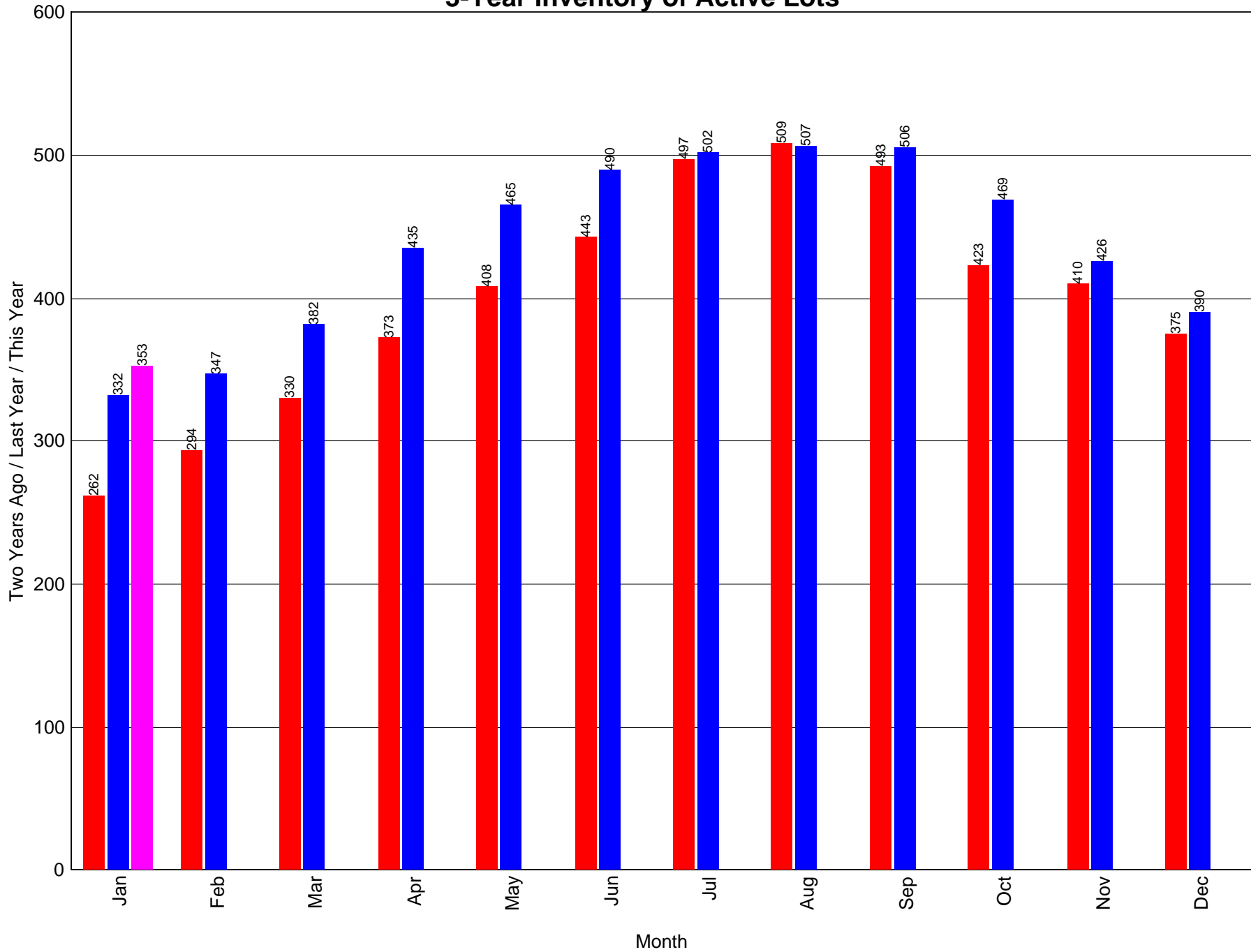
Townhouse Sub Area Average Prices YTD



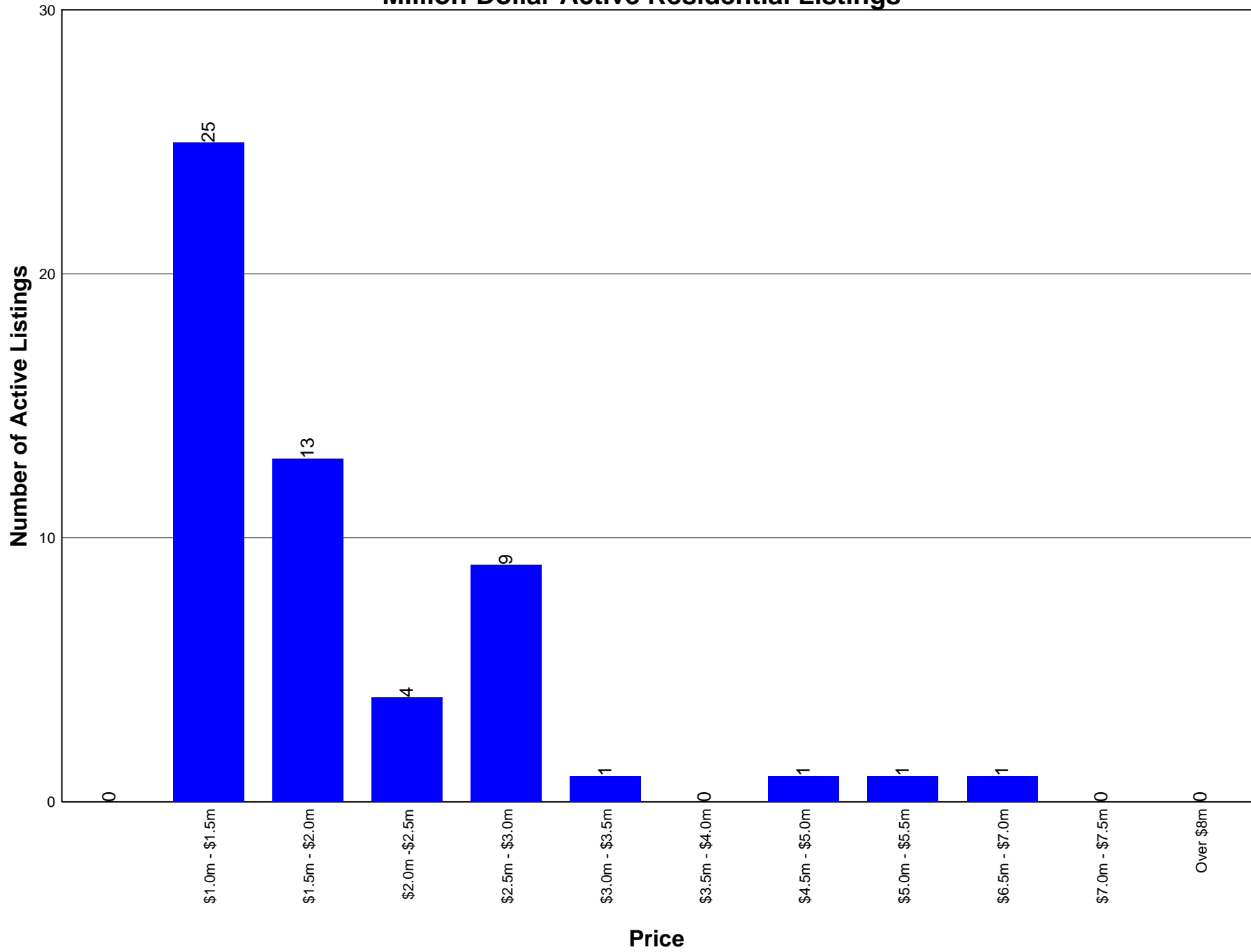
3-Year Inventory of Active Single Family Resident



3-Year Inventory of Active Lots



Million-Dollar Active Residential Listings



Million-Dollar Residential Sales (Last 2 Months)

