







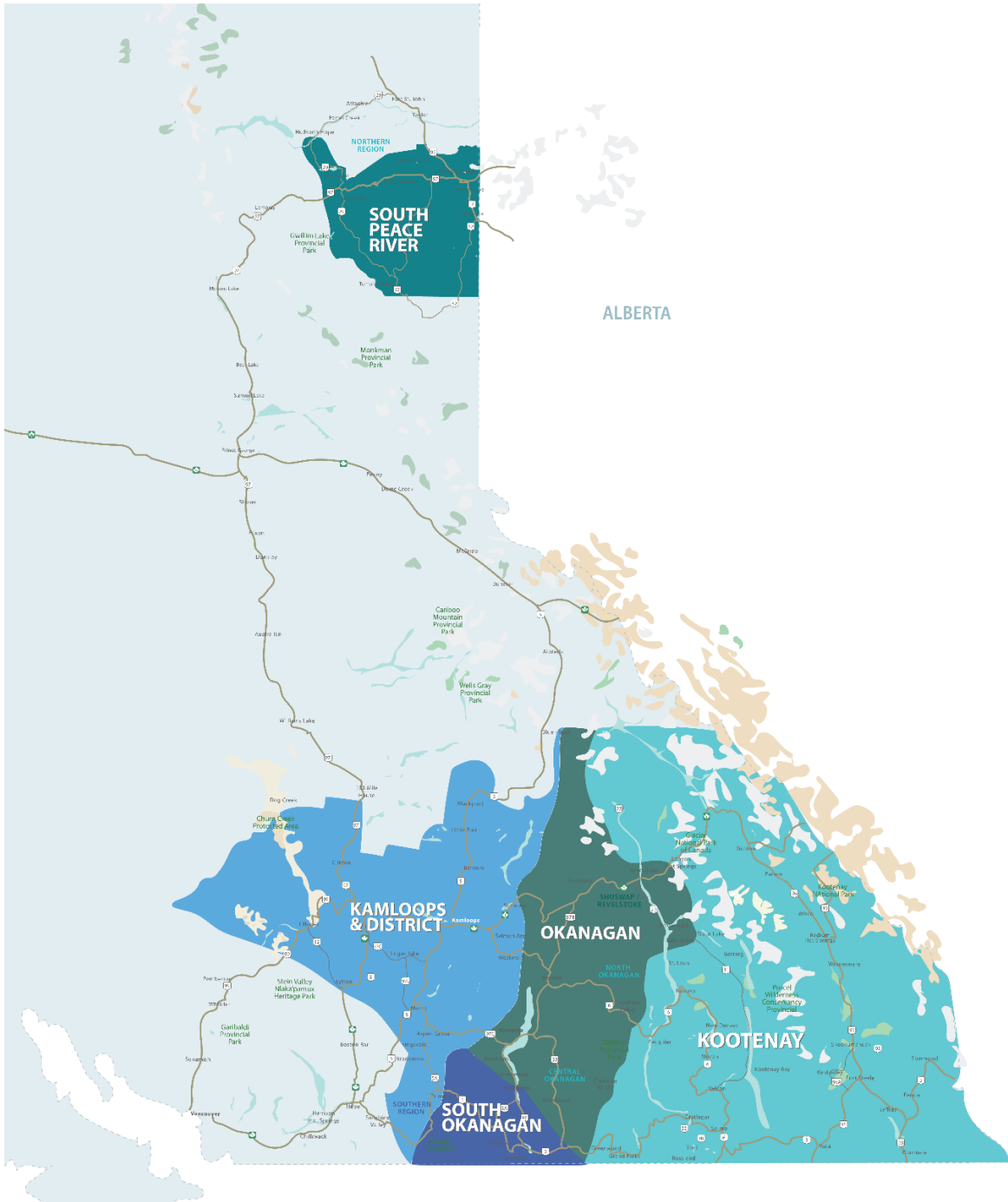
RESIDENTIAL SALES*
SEPTEMBER 2022
SUMMARY STATISTICS

				
	Units Sold	Dollar Volume (Millions)	Active Listings	New Listings
CENTRAL OKANAGAN	334 ↓-39.1%	\$321.2 ↓-26.3%	2,122 ↑89.1%	799 ↑5.8%
NORTH OKANAGAN	120 ↓-29.4%	\$86.2 ↓-21.7%	672 ↑44.2%	222 ↓-1.8%
SHUSWAP / REVELSTOKE	91 ↓-3.2%	\$57.5 ↑1.0%	507 ↑56.0%	123 ↓-20.1%
SOUTH OKANAGAN	101 ↓-52.6%	\$69.1 ↓-49.5%	850 ↑41.4%	178 ↓-23.6%
SOUTH PEACE RIVER AREA	37 ↓-7.5%	\$9.8 ↓-7.7%	277 ↓-17.6%	10 ↓-78.3%
KAMLOOPS AND DISTRICT**	166 ↓-46.1%	\$92.8 ↓-44.8%	974 ↑51.0%	359 ↓-7.2%
KOOTENAY	235 ↓-34.0%	\$119.9 ↓-28.1%	1,363 ↑21.6%	390 ↓-10.3%
TOTAL ASSOCIATION	1,084 ↓-37.3%	\$756.5 ↓-30.3%	6,765 ↑46.6%	2,081 ↓-6.9%

*Residential = Acreage, Duplex, Mobile Home, Recreational, Single Family, 3/4Plex, Apartment & Townhouse. Excludes Land

** Updated as of March 1, 2023

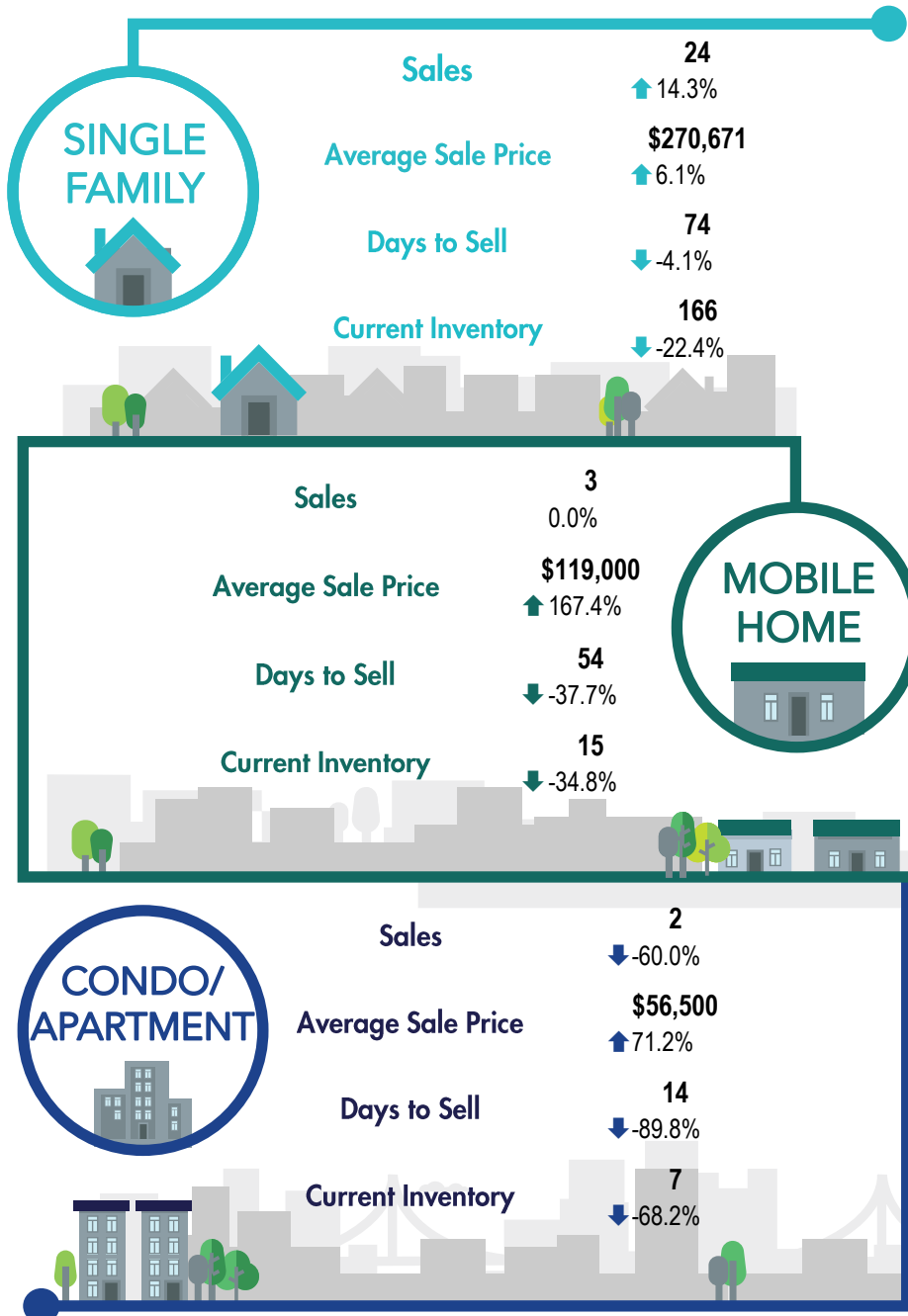
***Percentage indicate change from the same period last year



This map is for informational purposes. It does not represent an on-the-ground survey and represents only the approximate relative location of property boundaries.



SOUTH PEACE RIVER REGION



*The Association of Interior REALTORS® cautions that the average residential price is a useful figure only for establishing trends and comparisons over a period of time. It does not indicate an actual price for a home due to the wide selection of housing available over the vast geographic area.

**Percentage indicate change from the same period last year