







RESIDENTIAL SALES*
OCTOBER 2022
SUMMARY STATISTICS

				
	Units Sold	Dollar Volume (Millions)	Active Listings	New Listings
CENTRAL OKANAGAN	303 ↓-46.7%	\$252.5 ↓-47.8%	2,070 ↑93.3%	755 ↑3.4%
NORTH OKANAGAN	124 ↓-34.7%	\$83.2 ↓-29.5%	631 ↑45.1%	213 ↓-6.6%
SHUSWAP / REVELSTOKE	58 ↓-43.7%	\$37.9 ↓-43.7%	454 ↑65.1%	120 ↑25.0%
SOUTH OKANAGAN	133 ↓-35.1%	\$77.5 ↓-42.5%	804 ↑50.3%	128 ↓-7.2%
SOUTH PEACE RIVER AREA	36 ↓-23.4%	\$9.1 ↓-26.4%	257 ↓-19.4%	16 ↓-20.0%
KAMLOOPS AND DISTRICT**	144 ↓-52.0%	\$84.3 ↓-54.5%	902 ↑53.4%	320 ↓-4.5%
KOOTENAY	203 ↓-44.8%	\$94.3 ↓-45.8%	1,209 ↑28.2%	257 ↓-20.9%
TOTAL ASSOCIATION	1,001 ↓-43.8%	\$638.8 ↓-45.7%	6,327 ↑51.9%	1,689 ↓-9.8%

*Residential = Acreage, Duplex, Mobile Home, Recreational, Single Family, 3/4Plex, Apartment & Townhouse. Excludes Land

** Updated as of March 1, 2023

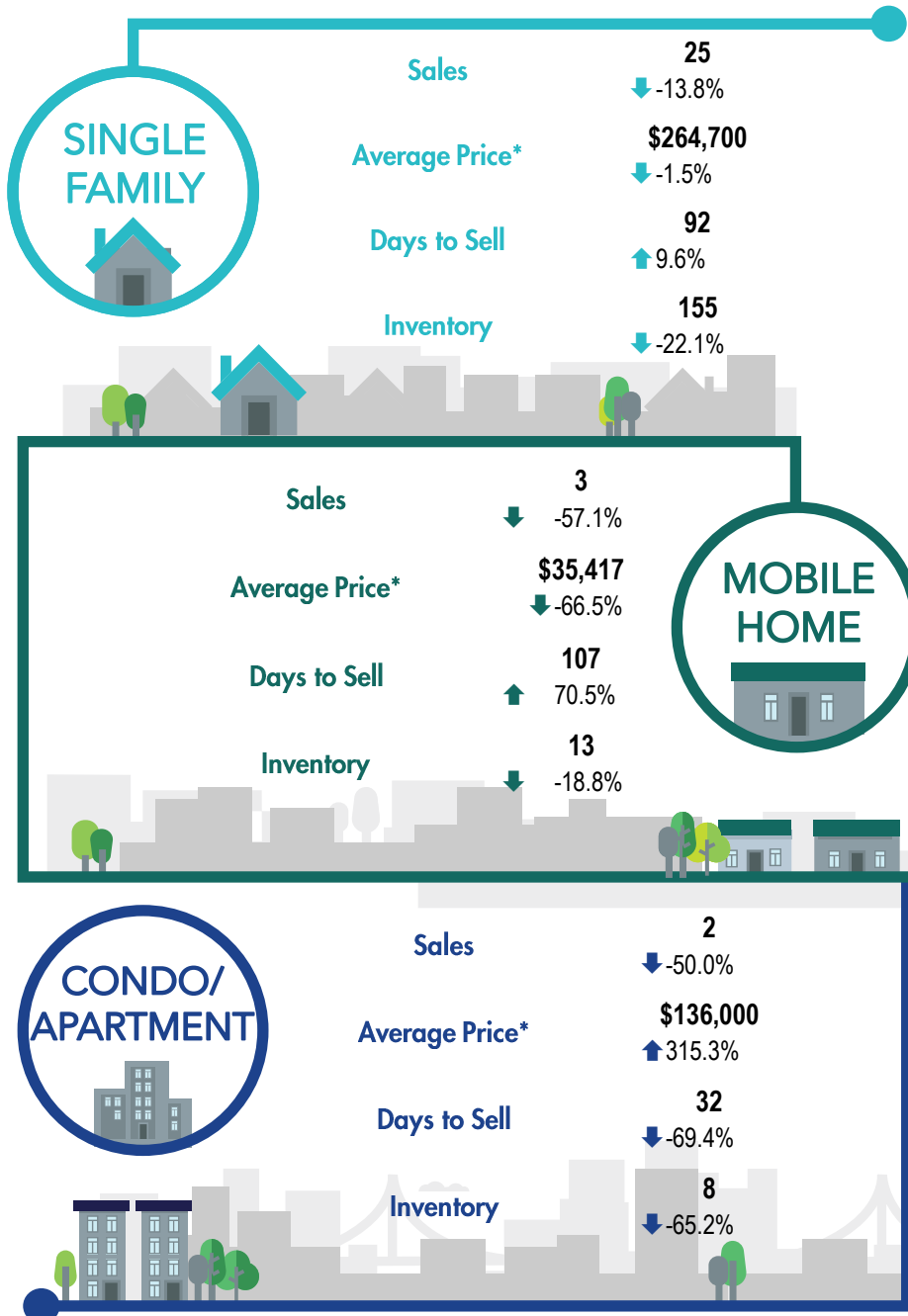
***Percentage indicate change from the same period last year



This map is for informational purposes. It does not represent an on-the-ground survey and represents only the approximate relative location of property boundaries.



SOUTH PEACE RIVER REGION



*The Association of Interior REALTORS® cautions that the average residential price is a useful figure only for establishing trends and comparisons over a period of time. It does not indicate an actual price for a home due to the wide selection of housing available over the vast geographic area.

**Percentage indicate change from the same period last year