





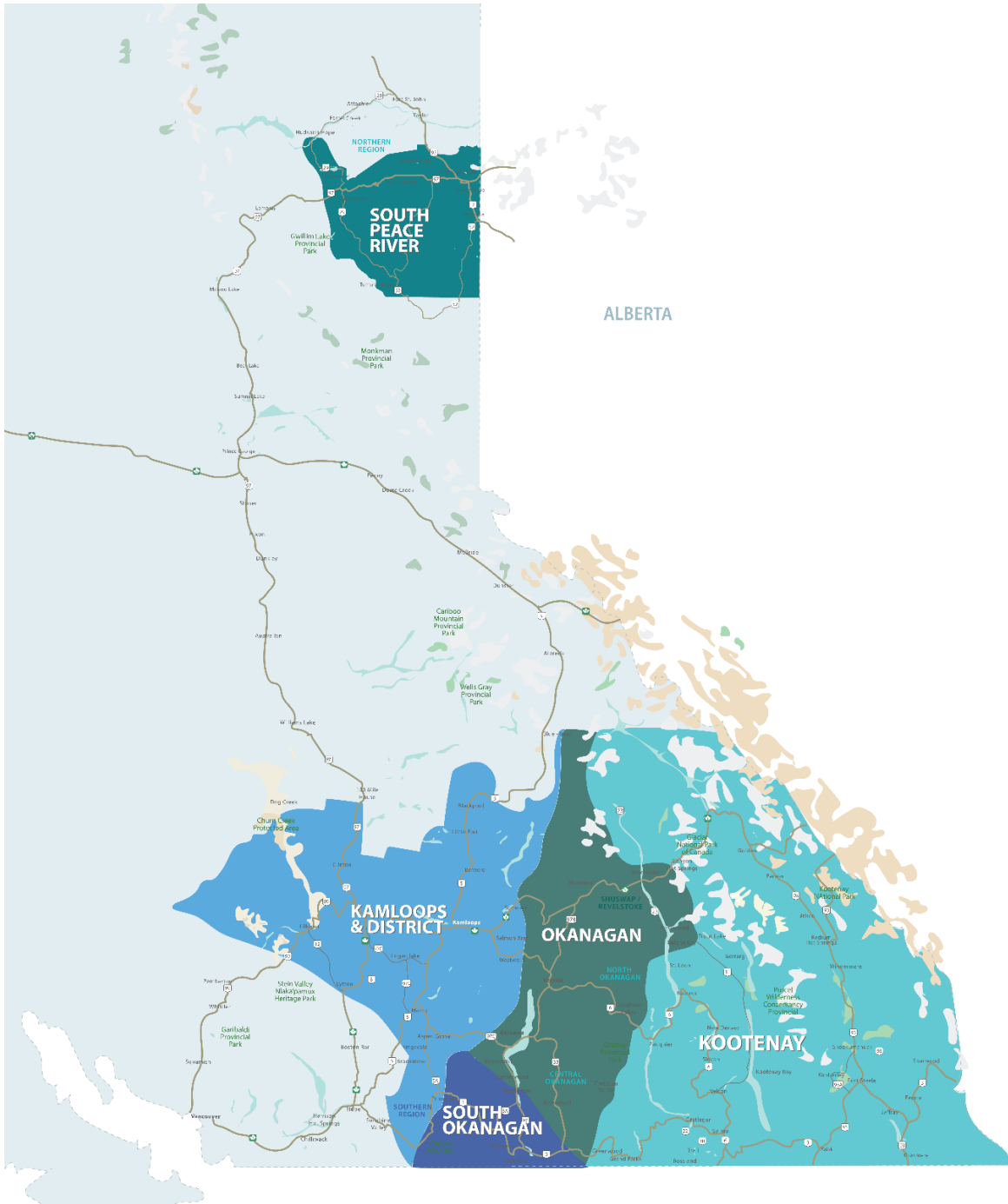


RESIDENTIAL SALES*
APRIL 2023
SUMMARY STATISTICS

	 Units Sold	 Dollar Volume (Millions)	 Active Listings	 New Listings
CENTRAL OKANAGAN	425 ↓ -26.1%	\$338.7 ↓ -36.2%	1,946 ↑ 45.9%	821 ↓ -28.8%
NORTH OKANAGAN	150 ↓ -31.2%	\$108.9 ↓ -32.6%	682 ↑ 57.1%	274 ↓ -22.4%
SHUSWAP / REVELSTOKE	87 ↓ -17.1%	\$58.6 ↓ -24.0%	417 ↑ 30.7%	173 ↓ -14.4%
SOUTH OKANAGAN	143 ↓ -28.5%	\$91.4 ↓ -36.5%	913 ↑ 64.5%	239 ↑ 2.1%
SOUTH PEACE RIVER AREA	28 ↓ -46.2%	\$7.4 ↓ -47.5%	216 ↓ -0.5%	13 ↓ -23.5%
KAMLOOPS AND DISTRICT	192 ↓ -30.9%	\$112.0 ↓ -39.6%	923 ↑ 35.7%	413 ↓ -23.1%
KOOTENAY	201 ↓ -40.7%	\$103.1 ↓ -41.9%	1,162 ↑ 31.3%	429 ↓ -15.7%
TOTAL ASSOCIATION	1,226 ↓ -30.6%	\$820.0 ↓ -36.5%	6,259 ↑ 41.5%	2,362 ↓ -21.4%

*Residential = Acreage, Duplex, Mobile Home, Recreational, Single Family, 3/4Plex, Apartment & Townhouse. Excludes Land

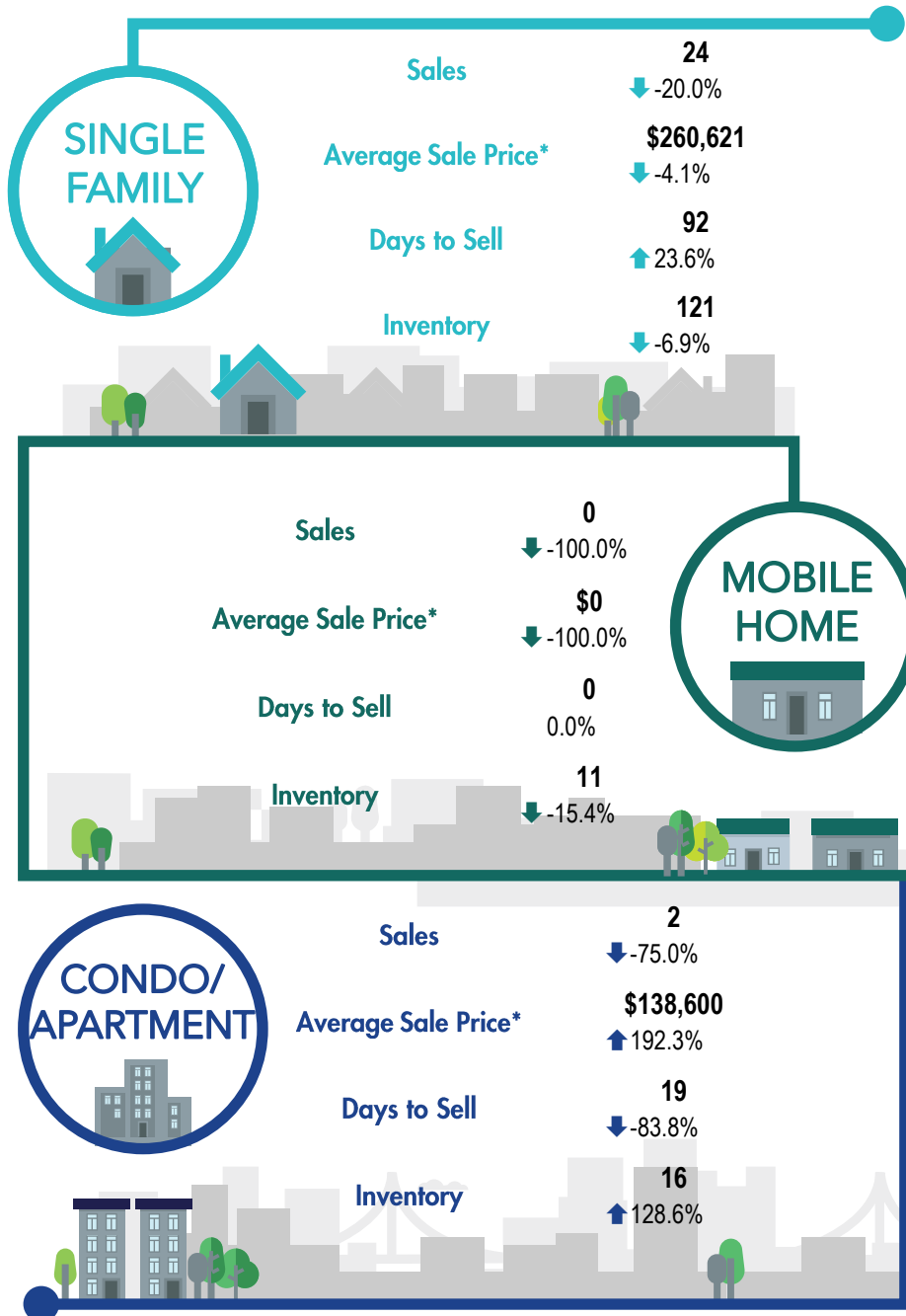
**Percentage indicates change from the same period last year



This map is for informational purposes. It does not represent an on-the-ground survey and represents only the approximate relative location of property boundaries.



SOUTH PEACE RIVER REGION



*The Association of Interior REALTORS® cautions that the average residential price is a useful figure only for establishing trends and comparisons over a period of time. It does not indicate an actual price for a home due to the wide selection of housing available over the vast geographic area.

**Percentage indicate change from the same period last year